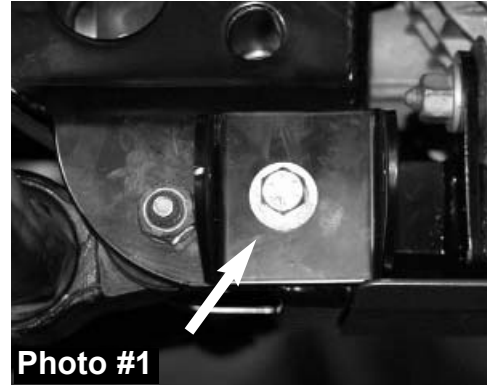




www.skyjacker.com

**99-02 Chevy/GMC 1500 4x4  
Class II Lateral Strut Bars  
Part # LCSB966**

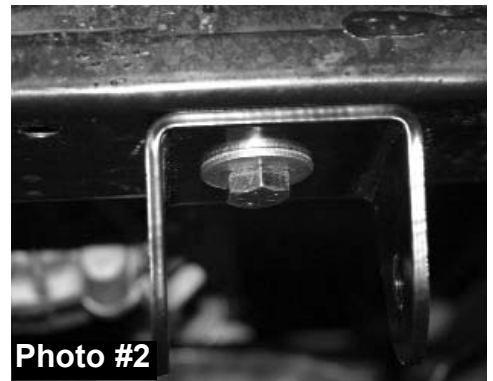
| <b>Part #</b> | <b>Description</b>            | <b>Quantity</b> |
|---------------|-------------------------------|-----------------|
| C966KBTF-S    | GM 1/2T, FRONT-KICKER BRACKET | 2               |
| C966KBTR-S    | GM 1/2T, REAR-KICKER BRACKET  | 2               |
| C966KB-S      | GM 1/2T, 3/4T LAT STRUT BAR   | 2               |
| 916X4FTB      | 9/16 X 4 FINE THREAD BOLT     | 4               |
| 12X6CTB       | 1/2 X 6 COARSE BOLT, GRADE 8  | 2               |
| 12X112FTB     | 1/2 X 1 1/2 FINE THRD BOLT    | 2               |
| 916FTN        | 9/16-18 NYLON INSERT LOCKNU   | 4               |
| 12CTN         | 1/2-13 COARSE N/I LOCK NUT    | 2               |
| 12FTN         | 1/2-20 FINE N/I LOCK NUT      | 2               |
| 916SAEW       | 9/16 SAE WASHERS              | 8               |
| 12USSW        | 1/2 USS WASHER                | 8               |
| SP2099-BK     | COMP STRUT BUSH, 99-02 GMC    | 8               |
| SSJEEPRPU     | SPRG SLEEVE JEEP R PU, TOY R  | 4               |



**Photo #1**  
Driver Side Shown

**With vehicle on flat level ground set the emergency brake and block the rear tires.**

1. Attach front strut bar bracket to cross member. Male end on backside of bracket will slide into cross member. Mount bracket to cross member so that inside bolt hole is closest to outside. Attach using 9/16 x 4 fine thread bolts, washers, and nuts. (See Photo #1).
2. Attach rear bracket to transfer case cross member using 1/2 x 1 1/2 fine thread bolts, washers, and nuts. Inside mounting hole will be closest to the inside. (See Photo #2).
3. Install bushings and sleeves into strut bars. Attach strut bars to brackets using 9/16 x 4 fine thread bolts, washers, and nuts. (See Photo #3).
4. Check all hardware for proper installation. Re-tighten all bolts after the first 100 miles.



**Photo #2**  
Passenger Side Shown



**Photo #3**

**Seat Belts Save Lives, Please Wear Your Seat Belt.**

**Available Accessories:**

**Dual Steering Stabilizer Part# 7296**



I-LCSB966 1/03

**Multiple Shock Kit Part# MS966**

