



JACK-IT™ 2.5"-8" 90-97 Mazda Navajo/B4000 4WD Lift Kits

Our 4 wheel drive Mazda twin I-beam coil spring suspension lift kits are extremely versatile to fit your specific needs—whether you want a basic “face-lift” while maintaining excellent highway performance, or need to increase suspension travel for backwoods trips or even serious off roading. We are able to accommodate these diverse needs by creating unique lift kit packages for each specific application.

Standard Packages

- Front coil springs
- Drop axle pivot brackets
- Radius arm drop brackets
- Drop pitman arm
- Rear blocks or add-a-leafs (depending on vehicle)
- Rear U-bolts
- Front and rear shocks
- DOT SS brakelines (6"-8")

Year	Kit	4"		
		Part #	Footnotes	Pricing
93-97 B4000	Standard	MZ101SD	79, 92, 102	
	Deluxe	MZ101DX	79, 92, 102	
	Premium	MZ101PR	79, 92, 102	

Deluxe Packages

All standard package items plus:

- Steering stabilizer
- Poly tie rod boots
- Poly radius arm bushings
- Poly center pivot bushings
- Stainless Steel brakelines (depending on vehicle)

Year	Kit	6"		
		Part #	Footnotes	Pricing
93-97 B4000	Standard	MZ102SD	79, 92, 102	
	Deluxe	MZ102DX	79, 92, 102	
	Premium	MZ102PR	79, 92, 102	
90-94 Navajo	Standard	MZ104SD	79, 92, 102	
	Deluxe	MZ104DX	79, 92, 102	
	Premium	MZ104PR	79, 92, 102	

Premium Packages

All Deluxe package items plus:

- Rear spring eye bolt
- Rear add-a-leafs or blocks are replaced with leaf springs (Navajo 6" is a rear flip kit)
- Extended radius arms (instead of drop brackets - except 8")

Year	Kit	8"		
		Part #	Footnotes	Pricing
93-97 B4000	Standard	MZ107SD	79, 92, 102	
	Deluxe	MZ107DX	79, 92, 102	
	Premium	MZ107PR	79, 92, 102	



Can't find what you're looking for? Give us a call! us!

1-888-4 JACKIT



ACK-IT™ 1.5-2.5" 83-86 Nissan 720 Pickup 4WD Lift Kit

This kit will allow you to run 30 x 9.5 tires without rubbing. This kit will get it's height by adjusting up the front torsion bars and will have a firmer ride.

Standard - Heavy duty tubular control arms to restore proper ball joint angle and camber, rear shockles, (4) Pro Comp shocks, Rear extended shackles and all necessary hardware with instructions.

Deluxe - Includes standard kit plus a steering stabilizer, poly sway bar bushings, and poly tie rod boots.

<u>Kit</u>	<u>2WD/4WD</u>	<u>Shocks</u>	<u>Part Number</u>	<u>Price</u>
1.5"-2.5" 83-86 Std.	4WD Only	Pro Comp	NS100SD ^{36, 87, 164}	
1.5"-2.5" 84-86 Dlx.	4WD Only	Pro Comp	NS100DX ^{36, 87, 164}	



ACK-IT™ 3" 86.5-97 Nissan Hardbody 4WD Lift Kit

For more than a decade the Nissan Hardbody was the symbol of a rugged hard working small truck that rode like a car. These 3" kits will give you the lift you need to fit larger 32" tires without sacrificing too much of the ride quality you love. (Note: These trucks often have chronic centerlink and idler arm wear problems after being lifted. We highly recommend the HD steering upgrade. See the Nissan Steering section.)

Standard - 3" packages include HD 27.5mm torsion bars, Front upper control arms, (4) Shocks, Rear Blocks and U-bolts, Rear shackles, Upper ball joints, and full hardware with step by step instructions.

Deluxe - Includes standard kit plus a steering stabilizer, poly sway bar bushings, and poly tie rod boots.

<u>Kit</u>	<u>2WD/4WD</u>	<u>Shocks</u>	<u>Part Number</u>	<u>Price</u>
3" Standard Kit	4WD Only	Calmini	NS101SD	
3" Deluxe Kit	4WD Only	Calmini	NS101DX	



ACK-IT™ 4" 86.5-97 Nissan Hardbody Pickup 4WD Lift Kit

These lift kits are a complete bolt on system and will give you plenty of clearance to run 32 x 11.50 tires. The recommended wheel back spacing is 3 3/4". The reason for the offset wheel is the relocated upper ball joint and spindle assembly on lifted vehicles is positioned higher and closer to the tire than the factory system. The maximum distance from the inner tire side wall to the rim mounting surface cannot exceed 4 1/2". Because of this design, the factory wheels will not work with this lift kit package. (Note: These trucks often have chronic centerlink and idler arm wear problems after being lifted. We highly recommend the HD steering upgrade. See the Nissan Steering section.)

Standard - Trailmaster lift kit, (4) Trailmaster SSV shocks, (93-95 includes proper outer tie rod ends).

Deluxe - Includes standard kit and sway bar bushings, (4) Small tie rod bushings, (1) Pro Comp steering stabilizer with Rancho bracket and a black boot.

Premium - Includes deluxe kit and heavy duty torsion bars.

<u>Kit</u>	<u>2WD/4WD</u>	<u>Shocks</u>	<u>Part Number</u>	<u>Price</u>
4" 86.5-7/93	4WD Only	SSV	NS102SD ^{16, 67, 164}	
4" 86.5-7/93	4WD Only	SSV	NS102DX ^{16, 67, 164}	
4" 86.5-7/93	4WD Only	SSV	NS102PR ^{16, 67, 164}	
4" 8/93-97	4WD Only	SSV	NS105SD ^{16, 67, 164}	
4" 8/93-97	4WD Only	SSV	NS105DX ^{16, 67, 164}	
4" 8/93-97	4WD Only	SSV	NS105PR ^{16, 67, 164}	



2"-2.25" 05-06 Nissan Frontier 2WD/4WD Lift Kit

Daystar comfort ride suspension kits are the perfect choice for a lift that will not only increase vehicle height, but enhance performance. Improve ground clearance, allow for larger tires utilize most of the stock components, and improve the all around on and off road capabilities at an affordable price. This Daystar kit is composed of (2) front coil spring spacers.

<u>Kit</u>	<u>2WD/4WD</u>	<u>Shocks</u>	<u>Part Number</u>	<u>Price</u>
2"-2.25" Lift	2WD/4WD	None	DAY KN09106	



6"/3" 04-07 Nissan Titan 2WD/4WD Lift Kit

This kit will lift the front of your vehicle 6" and the rear 3" for a level lift, but lift will vary due to vehicle specifications. This kit also provides clearance for 35" tires while maintaining the driving qualities and characteristics that make this truck so appealing. The stage I kit includes ES Series shocks. The Stage II Kit features coil over front shocks and MX6 series rear shocks. Both kits include all necessary hardware to lift your Nissan. (Note: Will not fit vehicles with "Auto-Leveling Rear Suspension". Does require some cutting to install.)

<u>Kit</u>	<u>2WD/4WD</u>	<u>Shocks</u>	<u>Part Number</u>	<u>Price</u>
6"/3" Lift	2WD	ES Series	PCS K6002B	
6"/3" Lift	2WD	MX6 Series	PCS K6002BMX	
6"/3" Lift	4WD	ES Series	PCS K6001B	
6"/3" Lift	4WD	MX6 Series	PCS K6001BMX	



Mazda/Nissan Lift Kits



Can't find what you're looking for? Give us a call! us!

1-888-4 JACKIT



6" 04-07 Nissan Titan 2WD/4WD Lift Kit

What Jack-it likes about this 6" kit for the Nissan Titan is the extended nodular iron steering knuckle design, this eliminates the need for any steering corrections the replacement knuckles take care of all of this, also you do not need to relocate the upper control arms. The one piece crossmembers keep the system solid and eliminates the creaking noises you can get from multiple piece crossmembers. The installation is made simple from the design of the kit and the detailed instructions included. You will get all necessary hardware to take care of antilock brake wiring, brake hoses, sway bar end links and kit even includes crossmember compression struts to make the kit more off-road capable. And the front factory skid plate is still retained. Jack-it likes the choice of the coil over spacer used with the OEM coil over shock in the standard kit. You can also upgrade to the 2.75" Pro-runner front coil over in the MX kit. The rear is lifted using rear blocks and U-bolts this keeps the factory ride and Pro Comp has all the corrections for brake lines on the rear and rear ES9000 shocks. You will need a 17" wheel with 4.5" to 5" of backspacing. you can clear 35x12.5 tires. This will set your Titan apart from the others and you will not have to worry about tire wear or hurting the great ride you are use to on your Titan.



<u>Kit</u>	<u>2WD/4WD</u>	<u>Shocks</u>	<u>Part Number</u>	<u>Price</u>
6" Lift Kit	4WD	ES3000	PCS 59001B	
6" Lift Kit	4WD	MX6	PCS 59001BMX	
6" Lift Kit	2WD	ES3000	PCS 59004B	
6" Lift Kit	2WD	MX6	PCS 59004BMX	



1/2" 96-05 Nissan Pathfinder 4WD Lift Kit

This Pathfinder has only this 1/2" tall kit available to upgrade the suspension, The standard kit features front and rear Old Man Emu coils that are shot peened – to reduce stress, which greatly enhances spring life. Double scragged – to eliminate spring sag. Variable rate coils – designed for optimum ride comfort and load carrying capabilities. Or upgrade to our deluxe kit and you get the standard kit and KYB GR-2 front struts and rear shocks. These are specially designed to deliver a smooth, comfortable ride. A patented check valve minimizes foaming and aeration to make sure the ride stays smooth, even under rough conditions.

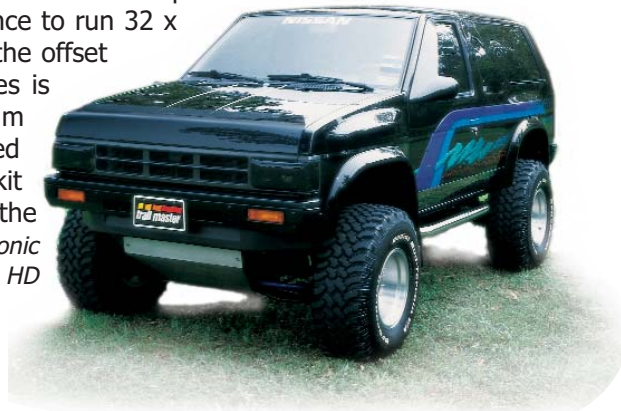


<u>Kit</u>	<u>2WD/4WD</u>	<u>Shocks</u>	<u>Part Number</u>	<u>Price</u>
1/2" Standard	4WD Only	Not Incl.	NS110SD	
1/2" Deluxe	4WD Only	KYB	NS110DX	



JACK-IT™ 4" 86.5-95 Nissan Pathfinder 4WD Lift Kit

The 4" lift kit packages for the 1986.5 - 1995 Pathfinder is a complete bolt on system and will give you plenty of clearance to run 32 x 11.50 tires. The recommended wheel back spacing is 3 3/4". The reason for the offset wheel is the relocated upper ball joint and spindle assembly on lifted vehicles is positioned higher and closer to the tire than the factory system. The maximum distance from the inner tire side wall to the rim mounting surface cannot exceed 4 1/2". Because of this design, the factory wheels will not work with this lift kit package. One nice thing about the design of this package, however, is that the factory ride characteristics are maintained. (Note: These trucks often have chronic centerlink and idler arm wear problems after being lifted. We highly recommend the HD steering upgrade. See the Nissan Steering section.)



Standard kit includes Trailmaster lift kit, (4) Trailmaster SSV shocks, (93-95 includes proper outer tie rod ends).

Deluxe kit includes standard kit plus bar bushings, (4) Small tie rod bushings, (1) Pro Comp steering stabilizer with Rancho bracket and a black boot.

Premium kit includes deluxe kit plus and heavy duty torsion bars.

<u>Kit</u>	<u>2WD/4WD</u>	<u>Shocks</u>	<u>Part Number</u>	<u>Price</u>
4" 86.5-7/93	4WD Only	SSV	NS104SD ^{16, 67, 164}	
4" 86.5-7/93	4WD Only	SSV	NS104DX ^{16, 67, 164}	
4" 86.5-7/93	4WD Only	SSV	NS104PR ^{16, 67, 164}	
4" 8/93-95	4WD Only	SSV	NS106SD ^{16, 67, 164}	
4" 8/93-95	4WD Only	SSV	NS106DX ^{16, 67, 164}	
4" 8/93-95	4WD Only	SSV	NS106PR ^{16, 67, 164}	



JACK-IT™ 3" 86.5-93 Nissan Pathfinder 4WD Lift Kit

This kit is the only complete bolt-on suspension system for your 4WD Pathfinder. This full system features signature plate upper control arms which allow for correct factory alignment and maximum articulation. This is the system to start building your Pathfinder into a capable off-road rig. (Note: These trucks often have chronic centerlink and idler arm wear problems after being lifted. We highly recommend the HD steering upgrade. See the Nissan Steering section.)

Standard kit includes laser crafted upper control arms, Vecton bushings, sleeves, Upper ball joints, 27.5mm heavy duty torsion bars, HD rear lift coils, Rear track bar bracket, Brake line extension bracket, Complete hardware and CALMINI performance shocks. Kits also comes complete with installation instructions.

Deluxe includes standard kit plus Sway bar bushings, (4) Small tie rod boots, Steering stabilizer with bracket and black boot.

<u>Kit</u>	<u>2WD/4WD</u>	<u>Shocks</u>	<u>Part Number</u>	<u>Price</u>
3" Standard	4WD Only	Calmini	NS103SD	
3" Deluxe	4WD Only	Calmini	NS103DX	



DAYSTAR 2"-2.25" 04-07 Nissan Armada 2WD/4WD Lift Kit

Daystar Comfort Ride Suspension kits are the perfect choice for a lift that will not only increase vehicle height, but enhance performance. Improve ground clearance, allow for larger tires, utilize most of the stock components and improve the all around on & off road capabilities at an affordable price. This kit includes front and rear coil spring spacers.



<u>Kit</u>	<u>2WD/4WD</u>	<u>Shocks</u>	<u>Part Number</u>	<u>Price</u>
2"-2.5" Black Poly	2WD/4WD	Not Incl.	DAY KN09102BK	



Can't find what you're looking for? Give us a call! us!

1-888-4 JACKIT

Mazda/Nissan Lift Kits



6" 04-07 Nissan Armada 2WD/4WD Lift Kit

This system includes welded one piece box section cross members that are constructed with 3/16" thick steel, Extended nodular iron knuckles are CNC machined for precise fit and alignment. Sway bar end links, compression struts, the standard kit includes rear ES3000 shocks and puck spacers for the factory front coil overs. Or upgrade to the MX kit and get new Pro Runner 2.75" coil over front shocks in place of the puck spacers. This kits allow the use of factory wheels and up to 35" tires will clear.



<u>Kit</u>	<u>2WD/4WD</u>	<u>Shocks</u>	<u>Part Number</u>	<u>Price</u>
6" w/o auto lvl rear	2WD/4WD	ES3000	PCS K6003B	
6" w/o auto lvl rear	2WD/4WD	MX6	PCS K6003BMX	
6" w/ auto lvl rear	2WD/4WD	ES3000	PCS 59007B	
6" w/ auto lvl rear	2WD/4WD	MX6	PCS 59007BMX	



2"-2.25" 05-06 Nissan Xterra 2WD/4WD Lift Kit

Daystar Comfort Ride Suspension kits are the perfect choice for a lift that will not only increase vehicle height, but enhance performance. Improve ground clearance, allow for larger tires, utilize most of the stock components and improve the all around on & off road capabilities at an affordable price. This kit includes front coil spring spacers and greaseable rear shackles.

<u>Kit</u>	<u>2WD/4WD</u>	<u>Shocks</u>	<u>Part Number</u>	<u>Price</u>
2"-2.5" Black Poly	2WD/4WD	Not Incl.	DAY KN09105BK	



3" 00-02 Nissan Xterra 4WD Lift Kit

Make your Nissan Xterra 2WD or 4WD stand out from the crowd and get better performance at the same time! Install a 3" suspension lift kit system designed by Calmini and run 32 x 11.5 tires. (Note: These trucks often have chronic centerlink and idler arm wear problems after being lifted. We highly recommend the HD steering upgrade. See the Nissan Steering section.)

Standard kit includes laser crafted HD upper control arms, Hi-angle upper ball joints, Delrin pivot bushings with sleeves, 27mm extreme duty torsion bars, Rear dual add-a-leafs, Rear sway bar extension links, Rear shackles, Bump stop extensions, (4) Calmini shocks, U-bolts, Hardware and instructions.

Deluxe includes standard kit plus Calmini Idler Arm Brace to strengthen the steering linkage.

<u>Kit</u>	<u>2WD/4WD</u>	<u>Shocks</u>	<u>Part Number</u>	<u>Price</u>
3" Standard	4WD Only	Calmini	NS108SD	
3" Deluxe	4WD Only	Calmini	NS108DX	