



---

## **INSTALLATION INSTRUCTIONS**

SIDE BAR PART #222013/222013-2  
2007 TOYOTA TUNDRA MAX CAB

### **PARTS LIST**

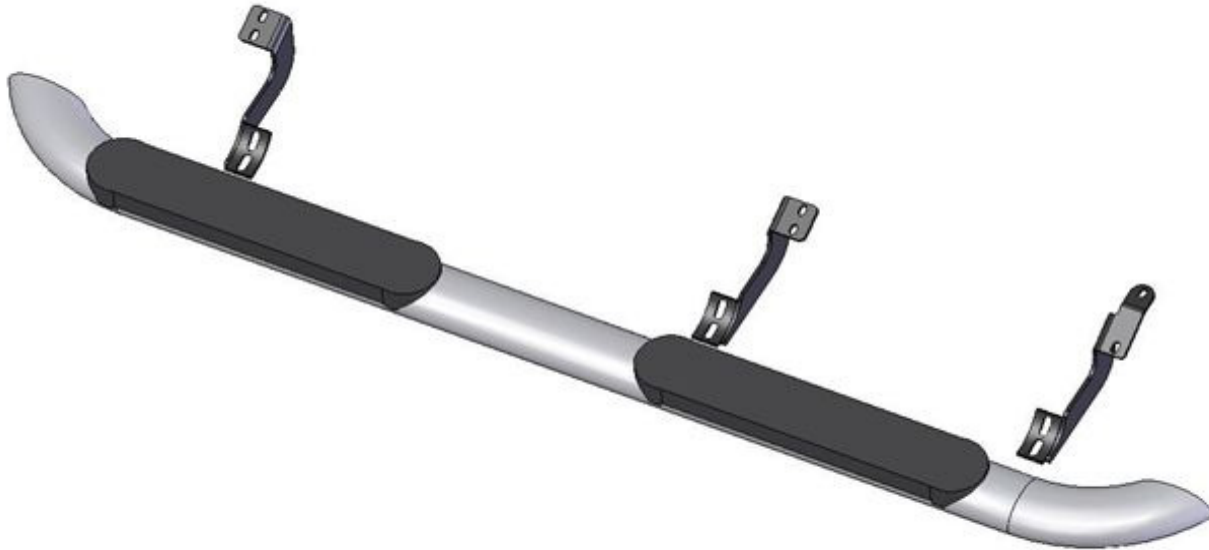
- |                               |   |
|-------------------------------|---|
| (2) SIDE TUBES WITH STEPS     |   |
| (2) FRONT MOUNT BRACKETS      | (12) 8MM x 30MM 1.25 PITCH HEX HEAD BOLTS |
| (2) CENTER BRACKETS           | (12) 8MM FLAT WASHERS                     |
| (2) REAR MOUNT BRACKETS       | (12) 8MM LOCK WASHERS                     |
| (12) 3/8" x 1" HEX HEAD BOLTS |   |
| (12) 3/8"SAE FLAT WASHERS     |   |

### **PROCEDURE**

1. Begin installation by working on driver side of the vehicle.
2. Remove plastic plugs on rocker panel to locate mounting holes for brackets. Attach and secure Front, Center, and Rear Mount Bracket to existing holes using 8MM bolts, 8MM flat washers, and 8MM lock washers. For each outer hole and hand tighten.
4. Attach Side Tube to Front, Center and Rear Brackets using 3/8" x 1" bolts, 3/8" SAE flat washers. Hand tighten. Adjust Side Tube so that it is level and centered, and tighten all bolts to complete the driver-side assembly.
5. Repeat process for driver side of vehicle to complete installation.

## **Passenger side brackets**

Rear show directly below



front of sidebar

NOTE: IT IS ADVISABLE TO RE-CHECK ALL FASTENERS FOR TIGHTNESS AFTER ONE WEEK.