

# INSTALLATION INSTRUCTIONS

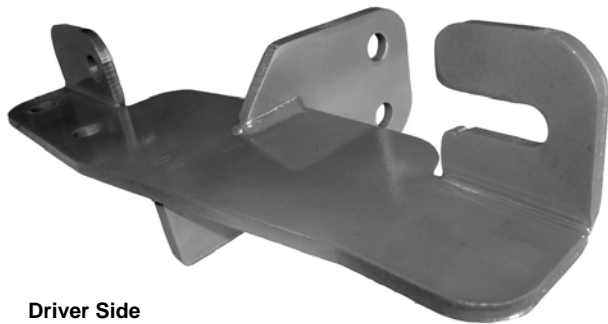
## GRILLE GUARD

### 08-10 GMC ACADIA

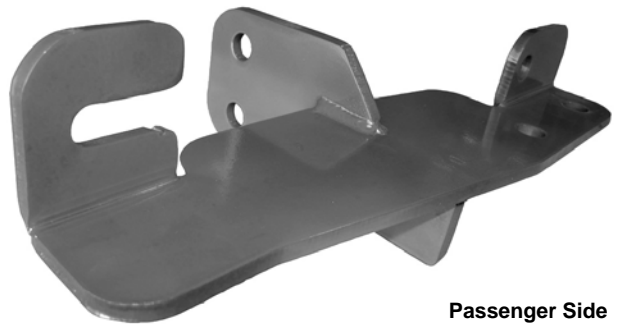
#### 4073

#### PARTS LIST:

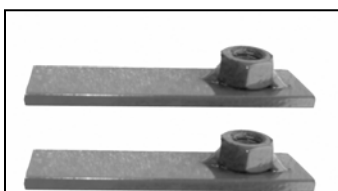
1	Grille Guard	2	8-1.25mm x 20mm Button Head Bolts
1	Driver/Left Mounting Bracket	2	8-1.25mm x 30mm Hex Head Bolts
1	Passenger/Right Mounting Bracket	2	8mm Nylock Nuts
1	Driver/Left Top Bracket	8	8mm ID x 22mm OD x 3mm Flat Washers
1	Passenger/Right Top Bracket	6	12-1.75mm x 30mm Hex Head Bolts
2	8mm Nut Plates	6	12mm Nylock Nuts
2	3/8" x 1" Self Tapping Bolt	12	12mm ID x 29mm OD x 3mm Flat Wahsers



**Driver Side  
Mounting Bracket**



**Passenger Side  
Mounting Bracket**



**Nut Plates**



**Driver Side Top Bracket**

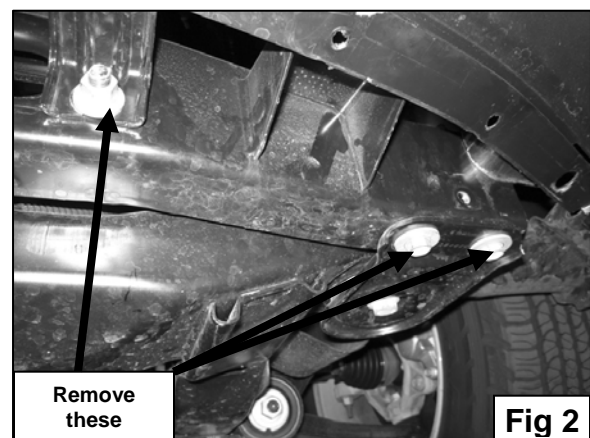
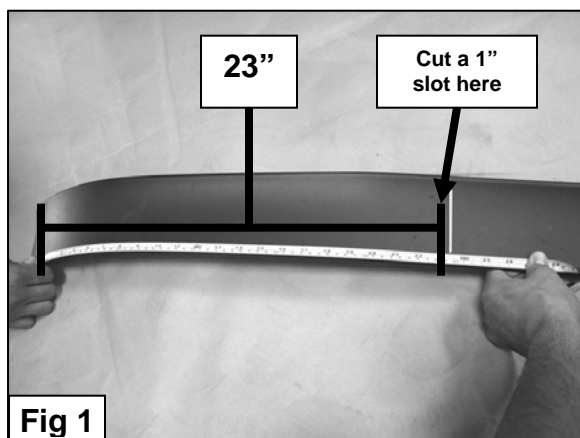


**Passenger Side Top Bracket**



## PROCEDURE:

1. REMOVE CONTENTS FROM BOX. VERIFY ALL PARTS ARE PRESENT. READ INSTRUCTIONS CAREFULLY BEFORE STARTING INSTALLATION. DO NOT ATTEMPT INSTALLATION ALONE; PERSONAL INJURY OR DAMAGE TO THE TRUCK MAY RESULT.
2. Measure from the driver outer edge of the air dam 23" towards the inside of the car and mark the location. Use a hack saw to cut a 1" x 3 1/2" gap on the air dam (**Figure 1**). **NOTE:** Use the mark as center of the cutting location.
3. Remove the driver side factory hex nut located on the cross member bar. This is the hex nut that mounts the radiator support (**Figure 2**).
4. Locate the driver side motor mount bushing. Use a 15mm socket to remove the two front (small) bolts. Proceed to loosen up the rear (large) bolt just enough so you can slide the Mounting Bracket in between motor mount support and frame (**Figure 2**).
5. Slide the slotted opening on the Mounting Bracket around the radiator support bolt and in between radiator bracket and frame while you slide the Mounting Bracket between motor mount bushing and frame (**Figure 3**).
6. Once the Mounting Bracket is in place, use the included 3/8" x 1" Self Tapping Bolt to attach the outer front facing Mounting Location on the Bracket to the factory hole in the cross member bar. Re-install the factory hex nut and the two bolts removed from the motor mount bushing. Tighten all hardware at this time including the large bolt on the motor mount bushing (**figure 4**). Tighten the large motor mount bolt to 75 ft lbs.
7. Repeat steps 2-6 for passenger side Mounting Bracket.
8. Open the hood and remove the plastic shroud on top of the radiator. Starting on the driver side, there is a factory hole in top of the radiator support next to the two factory bolts in the grille shell mounts. There is also one plastic fastener next to the rubber stopper, remove this fastener (**Figure 5**).
9. Position driver side Top Bracket over rubber stopper and with bent up facing the hood of the vehicle. Re-install plastic fastener to its original mounting location. Attach Top Bracket to factory hole using the included (1) 8-1.25mm x 30mm Hex Head Bolt, (1) 8mm Nut Plate, and (3) 8mm Flat Washers. Place two of the three Washers between the vehicle and Top Bracket as a spacer (**Figure 5**). Repeat this step for passenger side. **NOTE:** On the passenger side, in order to get Nut Plate under the grille shell mount, you need to remove the two bolts holding the radiator overflow tank in place and slide tank aside(**Figure 6**).
10. With help position Grille Guard on the outer side of Mounting Brackets. Attach Grille Guard to Mounting Brackets using the included (6) 12mm x 30mm Hex Head Bolts, (6) 12mm Nylock Nuts, and (12) 12mm Flat Washers (**Figure 7**). Do not tighten at this time.
11. Proceed to attach the Grille Guard to Top Brackets using the included (2) 8mm x 20mm Button Head Bolts, (2) 8mm Nylock Nuts, and (2) 8mm Flat Washers (**Figure 8**).
12. Level and adjust Grille Guard properly; and then tighten all hardware at this time.
13. Re-install plastic shroud back to the vehicle with its factory fasteners. **NOTE:** You will not be installing two of the fasteners to the factory hole used to mount the Top Bracket.
14. Do periodic inspections to the installation to make sure that all hardware is secure and tight



Slide Mounting Bracket  
between cross member bar  
and radiator support bracket

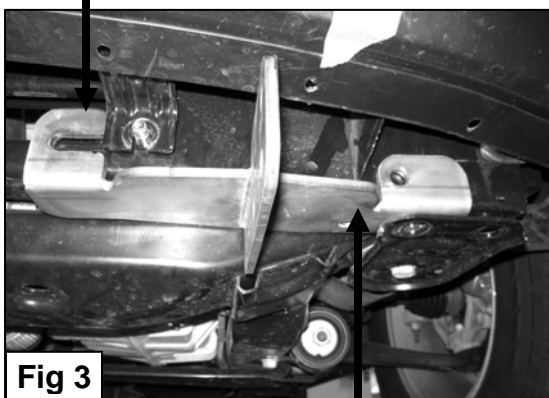


Fig 3

Slide Mounting  
Bracket between  
motor mount bushing

3/8" x 1" Self Tapping Bolt

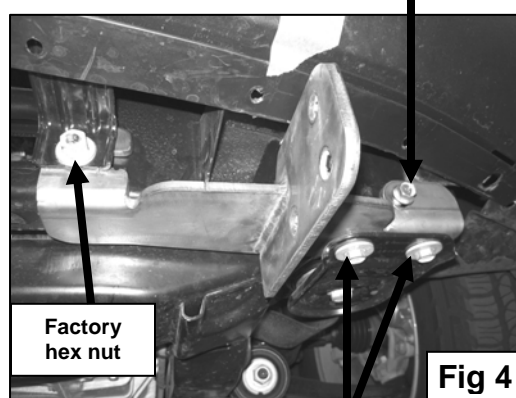


Fig 4

Factory  
hex nut

Factory  
Bolts

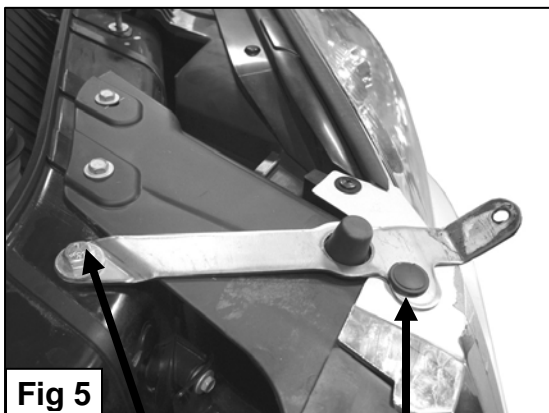


Fig 5

8mm x 30mm Hex Bolt  
8mm Nut Plate  
8mm Flat Washers

Factory fastener

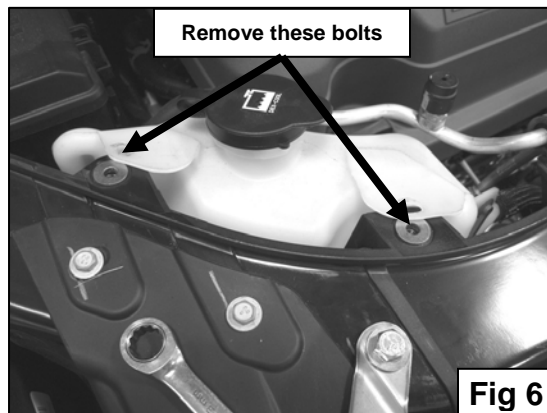


Fig 6

Remove these bolts



Fig 7

12mm x 30mm Hex Bolt  
12mm Nylock Nuts  
12mm Flat Washers



Fig 8

8mm x 20mm Button Head Bolt  
8mm Nylock Nut  
8mm Flat Washer