



## Installation Instructions

### Dodge Winch Bumper

Product Number: A1050-A1052

Application: '03-'05 Dodge

Ram 2500-3500 Heavy Duty

## SAFETY

### Your safety and the safety of others is very important.

- In order to help you make informed decisions about safety, we have provided installation instructions and other information.
- These instructions alert you to potential hazards that could hurt you or others.
- Please do a job safety analysis (JSA) before each task to identify potential hazards for your situation and remove/protect against them.
- You must use your own good judgment, and take your time.

**Read and understand all safety precautions and instructions before installing this product.**

THIS PRODUCT IS FOR OFFROAD USE ONLY. ALL LIABILITY FOR INSTALLATION AND USE RESTS WITH THE OWNER.

**CARELESS INSTALLATION AND OPERATION CAN RESULT IN SERIOUS INJURY OR EQUIPMENT DAMAGE.**

## Injury hazard

### Failure to observe these instructions could lead to severe injury or death.

- Always** remove jewelry and wear eye protection.
- Always** use extreme caution when jacking up a vehicle for work. Set emergency brake and use tire blocks. Locate and use the vehicle manufacturers designated lifting points. Use jack stands.
- Always** use appropriate and adequate care in lifting components into place.
- Always** insure components will remain secure during installation and operation.
- Always** wear safety glasses when installing this kit. A drilling operation will cause flying metal chips. Flying chips can cause serious eye injury.
- Always** use extreme caution when drilling on a vehicle. Thoroughly inspect the area to be drilled (on both sides of material) prior to drilling, and relocate any objects that may be damaged.
- Always** use extreme caution when cutting and trimming during fitting.
- Always** tighten all nuts and bolts securely per installation instructions.
- Always** route electrical cables carefully. Avoid moving parts, components that become hot and rough or sharp edges.
- Always** insulate and protect all exposed wiring and electrical terminals.
- Always** perform regular inspections and maintenance on mounts and related hardware.





## Installation Instructions

### Dodge Winch Bumper

Product Number: A1050-A1052

Application: '03-'05 Dodge

Ram 2500-3500 Heavy Duty

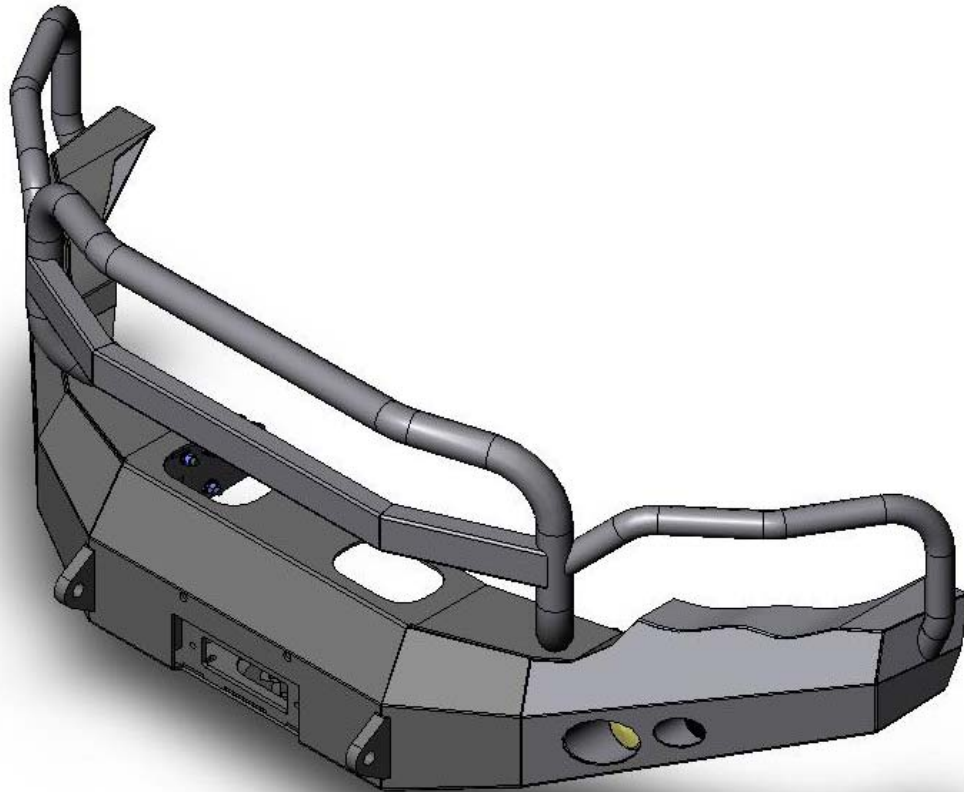
#### I. Overview

Congratulations on your new purchase of the industries' best and most stylish Dodge Winch Bumper! This bumper has been **engineered** for strength while keeping the weight down. It can accept the Warn 16.5 winch... and look cool doing it.

This product has also been **engineered** to allow alignment in three directions plus "castor" so you will end up with a very professional fit.

Your bumper was designed in 3-D from digitized data, CNC laser cut, fabricated, and powder coated... all in the U.S.A.

Enjoy the fit and finish of a quality Dodge Winch Bumper from Fab Fours Inc!





## Installation Instructions

### Dodge Winch Bumper

Product Number: A1050-A1052

Application: '03-'05 Dodge

Ram 2500-3500 Heavy Duty

## II. Parts List







## Installation Instructions

### Dodge Winch Bumper

Product Number: A1050-A1052

Application: '03-'05 Dodge  
Ram 2500-3500 Heavy Duty

### III. Tools Required

- Electric Drill
- 9/16" Drill bit
- Electric Hand Grinder
- Pry Bar
- Socket Wrench With Extension
- 10mm or 13mm Socket (year dependent)
- 18mm Socket
- 3/4" Socket
- 3/4" Open End Wrench
- 7/16" Open End Wrench
- 3/8" Open End Wrench
- 1/8" Allen Wrench
- 5/32" Allen Wrench
- Center punch
- Hammer
- Tin Snips

### IV. Vehicle Preparation

- A) Open hood.
- B) Diesel Only: Remove two 10mm (or 13mm) bolts holding top of intercooler to radiator support.

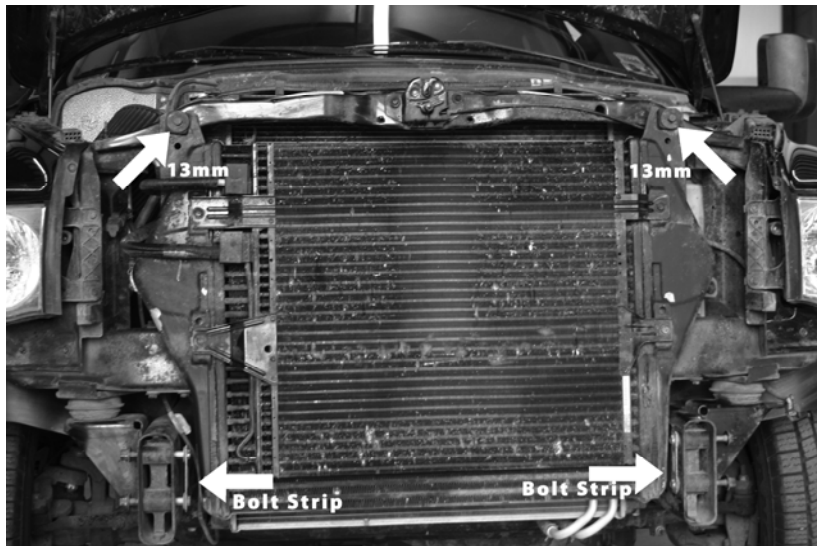


Figure 1

- C) Disconnect fog light wiring harness located under the driver-side bumper, zip tie to hole in body.





## Installation Instructions

### Dodge Winch Bumper

Product Number: A1050-A1052

Application: '03-'05 Dodge

Ram 2500-3500 Heavy Duty

- ❑ D) Remove four 18mm nuts and two bolt strips holding OEM bumper to frame rails. Diesel only: Move one side of intercooler at a time to remove bolt strips. **NOTE:** Be careful not to damage intercooler fins.



Figure 2 Diesel Only

- ❑ E) Remove OEM bumper
- ❑ F) Re-install and tighten two bolts holding top of intercooler to radiator support (Figure 1).
- ❑ G) Using a grinder, grind off the tack weld holding the OEM internal frame crush brace.

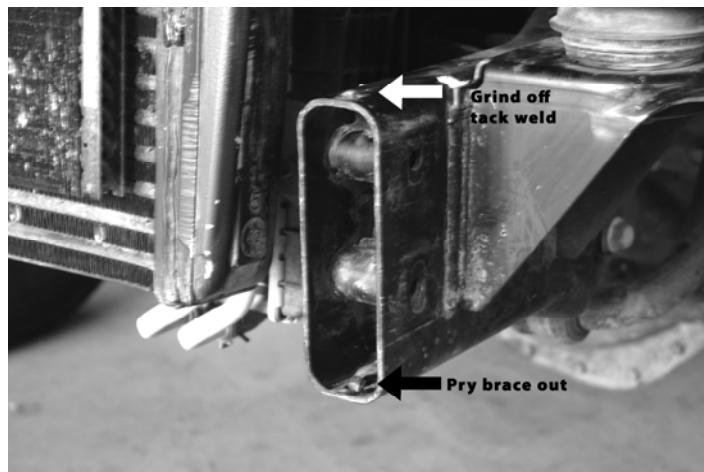


Figure 3





## Installation Instructions

### Dodge Winch Bumper

Product Number: A1050-A1052

Application: '03-'05 Dodge  
Ram 2500-3500 Heavy Duty

- ❑ **H)** Use a pry bar to remove the OEM internal frame crush brace from the frame rail (Figure 3).
- ❑ **I)** Install drilling template using the bolt strip from step D (Picture #4).  
Note: From now on install the bolt strip from outside to in. Install the top nut first and then tighten both.



**Figure 4**

Note: Drilling template is shown white for clarity

- ❑ **J)** Using a center punch mark the two holes toward the rear of the truck (Figure 4).
- ❑ **K)** Carefully drill the marks out completely through the frame rail with the 9/16" drill bit. Insuring that you stay level in order to later match the slots on the mounting bracket (#2/4). Note: as a precaution hold a piece of wood between the frame rail and the radiator to catch drill "punch thru."





## Installation Instructions

### Dodge Winch Bumper

Product Number: A1050-A1052

Application: '03-'05 Dodge

Ram 2500-3500 Heavy Duty

- ❑ **L)** Install frame rail crush sleeve unit (#9) into frame rail (Picture #5).  
Note: Beveled corner of crush sleeve unit is up and toward rear of truck.



Figure 5

- ❑ **M)** Complete steps G-L for the opposite frame rail.







## Installation Instructions

### Dodge Winch Bumper

Product Number: A1050-A1052

Application: '03-'05 Dodge  
Ram 2500-3500 Heavy Duty

## V. Lights and wiring installation

### Turn Indicator

- ❑ A) Remove headlights following procedure in owners manual. On each side, tap into the three turn indicator wires using supplied tap connectors (reference the wiring diagram).



Figure 6

- ❑ B) Connect supplied turn indicator wiring harnesses to tap connectors following wiring diagram; repeat for other side.
- ❑ C) Replace headlights in reverse order of removal.
- ❑ D) Tap into OEM fog light harness following wiring diagram using two supplied tap connectors.
- ❑ E) Connect supplied fog lamp wiring harness to tap connectors following wiring diagram.





## Installation Instructions

### Dodge Winch Bumper

Product Number: A1050-A1052

Application: '03-'05 Dodge

Ram 2500-3500 Heavy Duty

- F) Install turn indicators into outside bumper light pockets using three self-tapping screws (#14) per side.

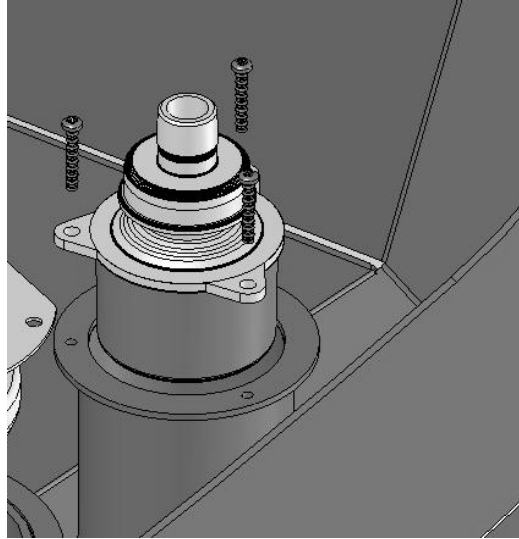


Figure 7

- G) Install fog lamp brackets onto inner light pockets using two bolts and nuts (#18, #19) per side and attach running light to bracket as shown using two bolts, washers, and nuts (#16, #17, #15) per side. Verify proper alignment of lights before fully tightening.

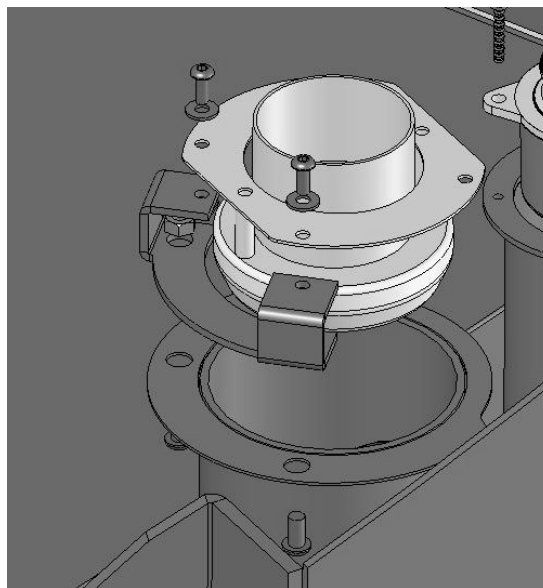


Figure 8





## Installation Instructions

### Dodge Winch Bumper

Product Number: A1050-A1052

Application: '03-'05 Dodge  
Ram 2500-3500 Heavy Duty

- ❑ H) Connect wiring harnesses to lights as shown in wiring diagram.
- ❑ I) Verify proper operation of lights. **Note:** Turn indicators should be dim during "running" condition and flash bright for turn.

### VI. Dodge Winch Bumper Installation

- ❑ **Optional:** If installing winch and roller fairlead (neither provided) into bumper, do it at this time. Bottom bolts (not provided) go through fairlead, then into winch. Thread 7/16" cap screws (#22) through hole in front bumper and into winch body.

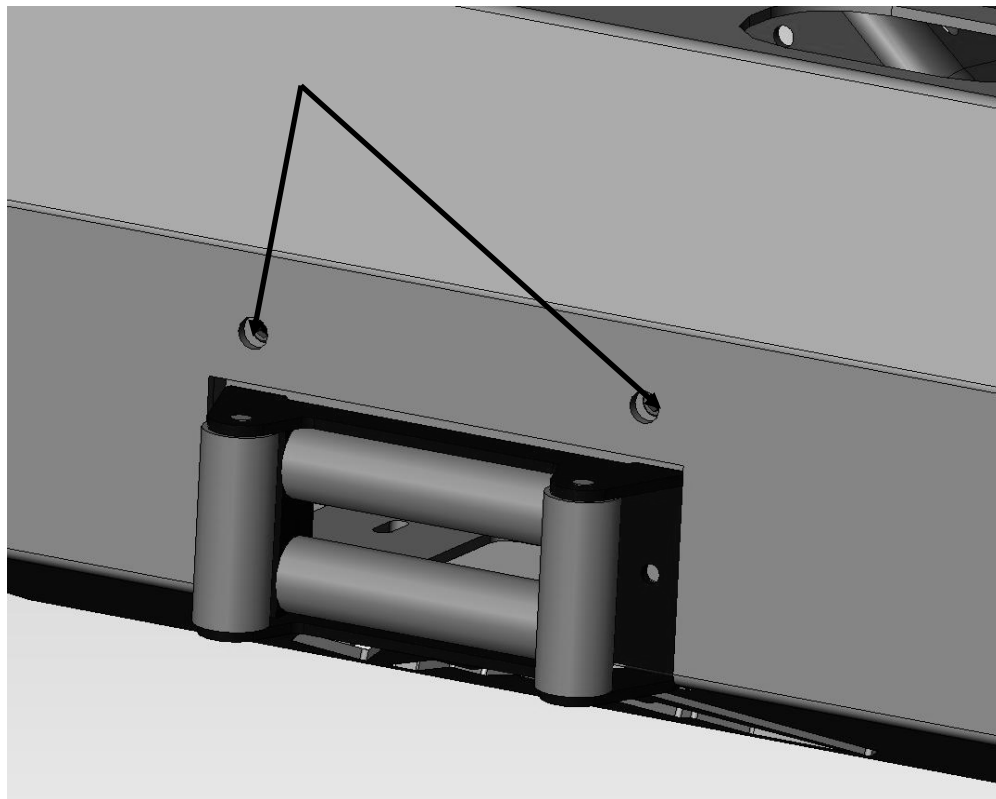


Figure 9





## Installation Instructions

### Dodge Winch Bumper

Product Number: A1050-A1052

Application: '03-'05 Dodge

Ram 2500-3500 Heavy Duty

- A) Assemble the mounting brackets by putting two halves together (Picture #9) and loosely installing two 1/2" bolts (#13), four flat washers (#10), two lock washers (#11), and two hex nuts (#12), to hold assembly together. Left side shown. Repeat for other side.

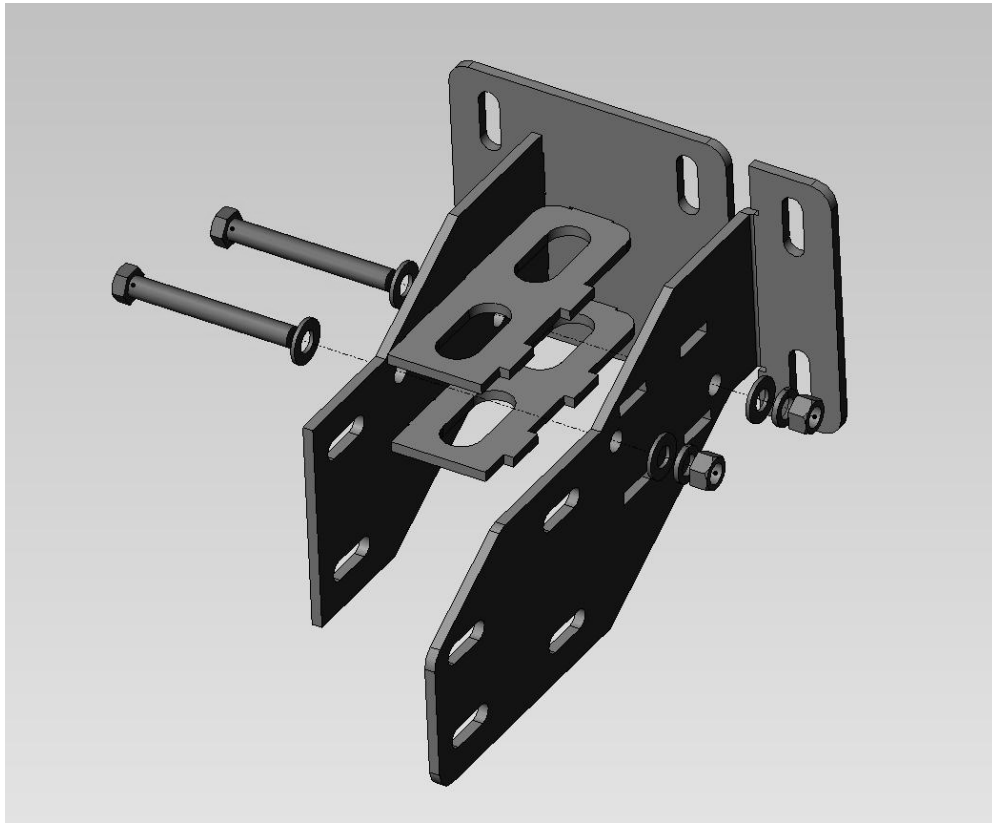


Figure 10





## Installation Instructions

### Dodge Winch Bumper

Product Number: A1050-A1052

Application: '03-'05 Dodge  
Ram 2500-3500 Heavy Duty

- B) Install mounting brackets to frame rails with the bumper mounting flanges "up" (Picture #10) using two 1/2" bolts (#13), four flat washers (#10), two lock washers (#11), and two hex nuts (#12), along with OEM fasteners on front hole set. Finger tighten only to allow adjustment.

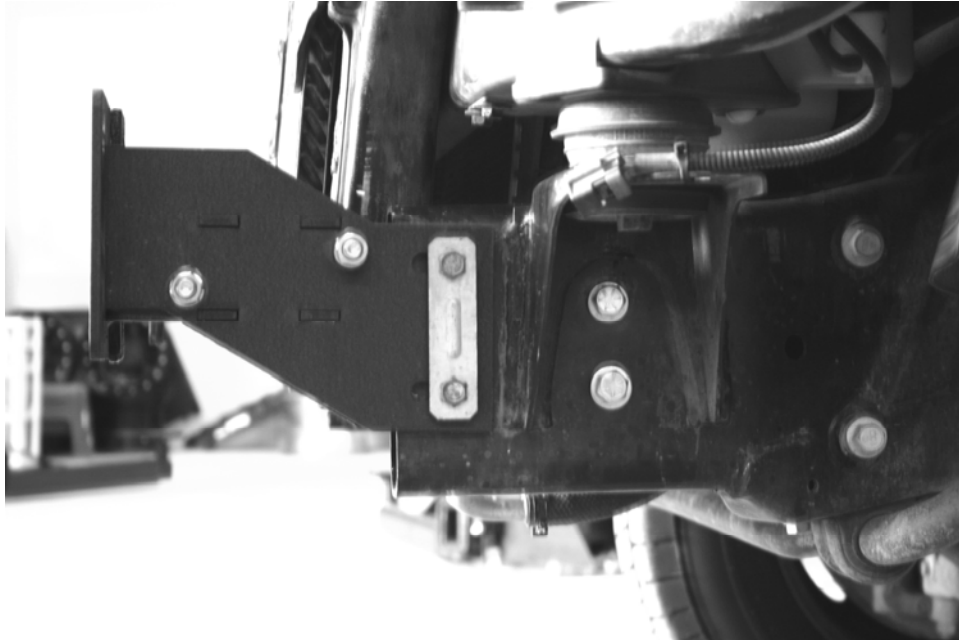


Figure 11





## Installation Instructions

### Dodge Winch Bumper

Product Number: A1050-A1052

Application: '03-'05 Dodge

Ram 2500-3500 Heavy Duty

- ❑ C) Install 1/2" x 1 1/2" bolts (#21) with washer (#10) through outside hole set and 1/2" x 1 3/4" bolts (#20) with washer (#10) through inside hole set. Utilize access holes to insert bolts. Repeat for other side.

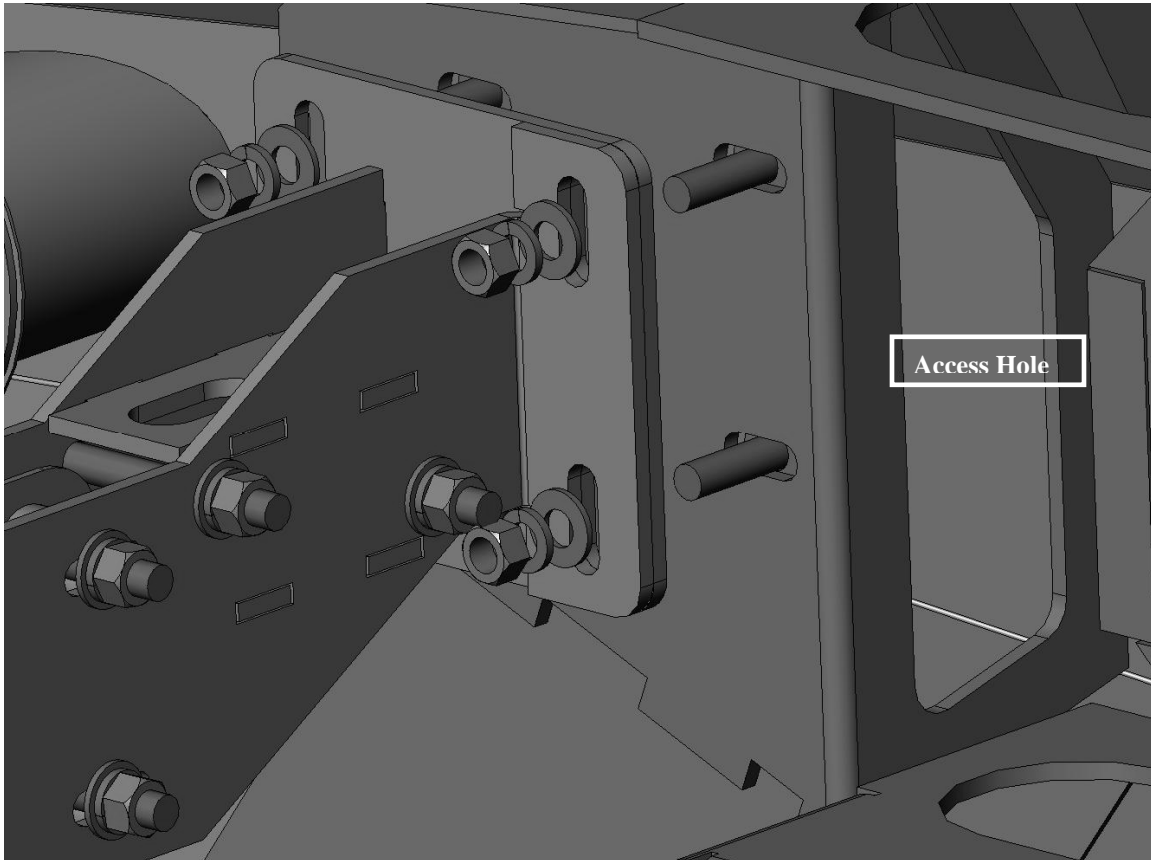


Figure 12

- ❑ D) Carefully lift bumper and line bolts up to the mounting holes on frame mounts. Hold bumper against mounting flanges and install a flat washer (#10), lock washer (#11), and nut (#12) on each bolt. Finger tighten only to allow adjustment.





## Installation Instructions

### Dodge Winch Bumper

Product Number: A1050-A1052

Application: '03-'05 Dodge

Ram 2500-3500 Heavy Duty

- E) Adjust the bumper to achieve good visual alignment as follows:

1. Adjust "castor" and in/out with mounting bracket to frame bolts.

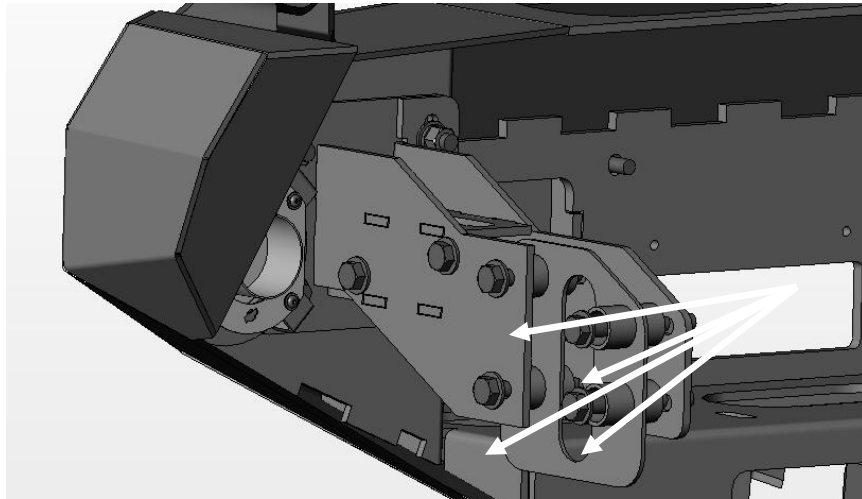


Figure 13

2. Adjust left/right and up/down with the bumper/bracket flange bolts. Mount transparent to show slotted adjustment.

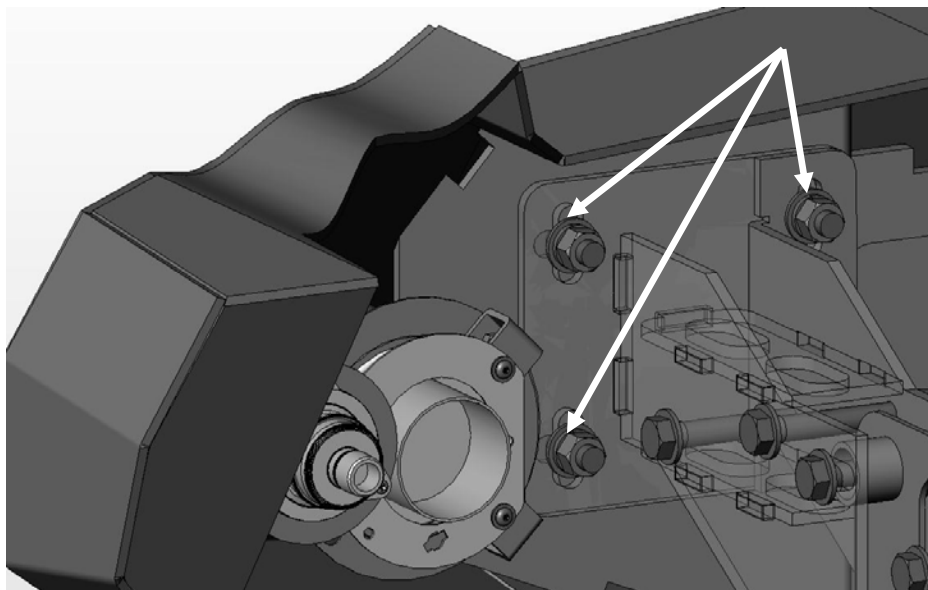


Figure 14





## Installation Instructions

### Dodge Winch Bumper

Product Number: A1050-A1052

Application: '03-'05 Dodge

Ram 2500-3500 Heavy Duty

#### Alignment Tips:

- In general, two fully tightened bolts will hold the bumper in place – do not tighten all of the bolts until proper alignment is achieved.
  - A floor jack (or two) may be used to hold each side of the bumper up and for small vertical adjustments during alignment process.
- F) Verify that hood clears tubing (if applicable), and closes fully before the bolts are tightened completely. Tighten all fasteners, beginning with frame mounts; then tighten all mount-to-bumper fasteners.

**Optional:** Trim inner plastic fender with tin snips to match bumper profile.







## Installation Instructions

### Dodge Winch Bumper

Product Number: A1050-A1052

Application: '03-'05 Dodge

Ram 2500-3500 Heavy Duty

## VII. Wiring Diagram

**Note: Colors may vary**

### Driver Side Turn Indicator at Headlight

OEM (Running) White/Yellow → White Fab Fours

OEM (Turn) White/Green → Red Fab Fours

OEM (Ground) Black → Green Fab Fours

### Passenger Side Turn Indicator at Headlight

OEM (Running) White/Grey → White Fab Fours

OEM (Turn) White/Brown → Red Fab Fours

OEM (Ground) Black/Brown → Green Fab Fours

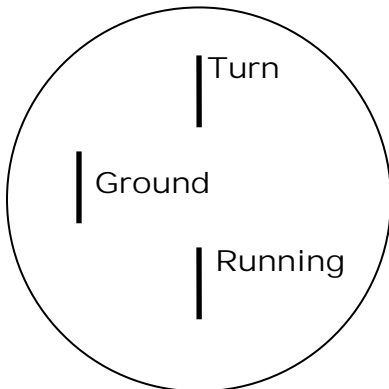
### Fog Lamp

OEM (Power) White/Yellow → Red Fab Fours

OEM (Ground) Black → Green Fab Fours

**Note: Tap into Fab Fours driver side fog lamp harness to supply passenger side**

### Hella Turn Indicator Connectors





## Installation Instructions

### Dodge Winch Bumper

Product Number: A1050-A1052

Application: '03-'05 Dodge  
Ram 2500-3500 Heavy Duty

#### VIII. Maintenance/Care

- Periodically check and tighten all fasteners.
- Stripped, fractured, or bent bolts or nuts need to be replaced.

#### IX. Contact Information

Fab Fours Inc.  
10424 Rodney St  
Charlotte, NC 28134

Phone (866)-385-1905  
Fax (866)-574-1424  
Email [Support@fabfours.com](mailto:Support@fabfours.com)



More than expected... Better than expected



