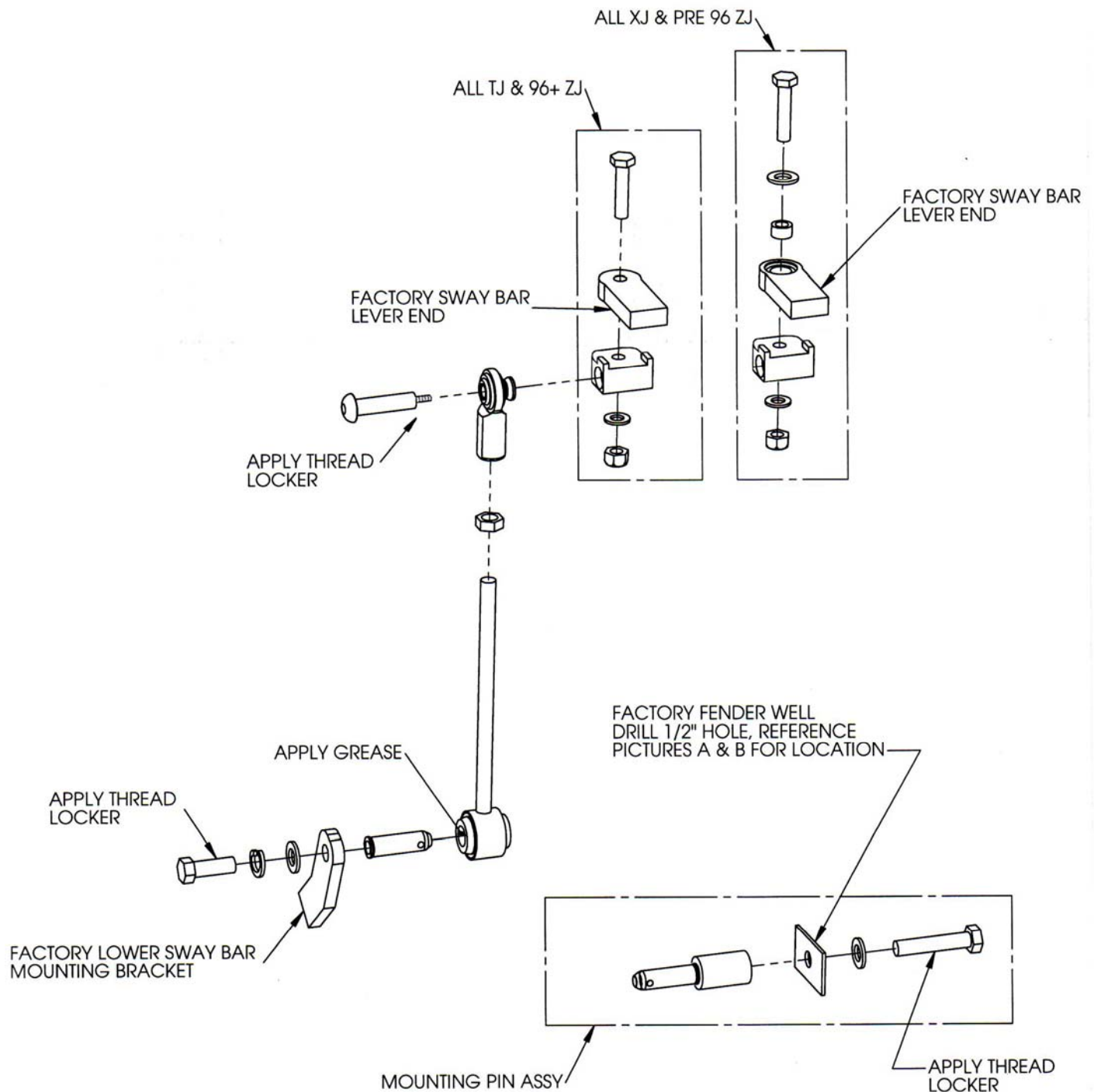




RUBICON MANUFACTURING INC. 3290 MONIER CR. RANCHO CORDOVA, CA. 95742 916-473-4600

INSTALLATION INSTRUCTIONS FOR GEN2 SWAY BAR DISCONNECTS





PICTURE -A-
MOUNTING PIN HOLE LOCATION & MOUNTING ORENTATION FOR ALL TJ'S

NOTE- ABOVE IMAGE SHOWS 11" DISCONNECTS (P/N RE1142, FOR 4.5-5.5" LIFTS)
FOR 2-3.5" LIFTS, 9" DISCONNECTS ARE USED (P/N RE1141), MOUNT PIN APPROX 2" FORWARD FROM ABOVE POSITION
FOR 0-2" LIFTS, 7" DISCONNECTS ARE USED (P/N RE1140), MOUNT PIN APPROX 4" FORWARD FROM ABOVE POSITION

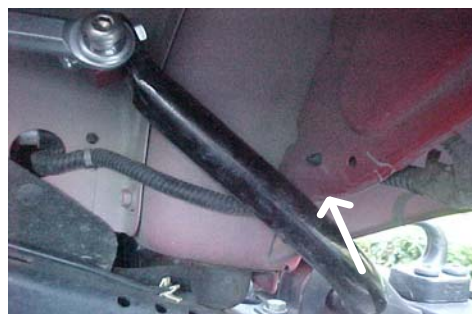


PICTURE -B-
MOUNTING PIN HOLE LOCATION & MOUNTING ORENTATION FOR ALL XJ & ZJ'S, W/O RE SWAY BAR
RELOCATION BRACKETS (P/N RE9921)



MOUNTING ORIENTATION FOR ALL
XJ & ZJ'S WITH RE SWAY BAR RELOCATION
BRACKETS (P/N RE921)

GENERAL INSTALLATION TIPS



1. FOR 11" TJ DISCONNECTS (P/N RE1142), IT IS NECESSARY TO SLIGHTLY BEND FORWARD, THE LOWER PART OF THE FENDER SUPPORT STRUCTURE, TO MAKE CLEARANCE FOR THE SWAY BAR LEVER.