



Installation Instructions

2010+ Ram HD(2500, 3500, 4500, 5500) Front Winch Bumper

Product Number: A2451, A2452, A2450

Application: 2010+ Ram 2500, 3500, 4500, & 5500 Trucks

SAFETY

Your safety and the safety of others is very important.

- In order to help you make informed decisions about safety, we have provided installation instructions and other information.
- These instructions alert you to potential hazards that could hurt you or others.
- Please do a job safety analysis (JSA) before each task to identify potential hazards for your situation and remove/protect against them.
- You must use your own good judgment, and take your time.

Read and understand all safety precautions and instructions before installing this product.

THIS PRODUCT IS FOR OFFROAD USE ONLY. ALL LIABILITY FOR INSTALLATION AND USE RESTS WITH THE OWNER.

CARELESS INSTALLATION AND OPERATION CAN RESULT IN SERIOUS INJURY OR EQUIPMENT DAMAGE.

Injury hazard

Failure to observe these instructions could lead to severe injury or death.

- Always** remove jewelry and wear eye protection.
- Always** use extreme caution when jacking up a vehicle for work. Set emergency brake and use tire blocks. Locate and use the vehicle manufacturers designated lifting points. Use jack stands.
- Always** use appropriate and adequate care in lifting components into place.
- Always** insure components will remain secure during installation and operation.
- Always** wear safety glasses when installing this kit. A drilling operation will cause flying metal chips. Flying chips can cause serious eye injury.
- Always** use extreme caution when drilling on a vehicle. Thoroughly inspect the area to be drilled (on both sides of material) prior to drilling, and relocate any objects that may be damaged.
- Always** use extreme caution when cutting and trimming during fitting.
- Always** tighten all nuts and bolts securely per installation instructions.
- Always** route electrical cables carefully. Avoid moving parts, components that become hot and rough or sharp edges.
- Always** insulate and protect all exposed wiring and electrical terminals.
- Always** perform regular inspections and maintenance on mounts and related hardware.





Installation Instructions

2010+ Ram HD(2500, 3500, 4500, 5500) Front Winch Bumper

Product Number: A2451, A2452, A2450

Application: 2010+ Ram 2500, 3500, 4500, & 5500 Trucks

I. Overview

Congratulations on your new purchase of the industries' best and most stylish bumper available for the new 2010+ Ram Heavy Duty Trucks! This Bumper has been **engineered** for strength while keeping the weight down.

Your bumper was designed in 3-D from digitized data, CNC laser cut, fabricated, and powder coated... all in the U.S.A.

Enjoy the fit and finish of a quality Front Bumper from Fab Fours Inc.





Installation Instructions

2010+ Ram HD(2500, 3500, 4500, 5500) Front Winch Bumper

Product Number: A2451, A2452, A2450

Application: 2010+ Ram 2500, 3500, 4500, & 5500 Trucks

II. Tools Required

- 10, 13, 18mm,3/4” Wrenches
- 18mm, 24mm,3/4” Socket
- Socket wrench and short extension
- Test Light
- Assorted General Tools

III. Vehicle Preparation

A. Disconnect the Fog Light harness on the driver side of the OEM bumper.

B. Open Hood and Remove “Heavy Duty” Dust Shield.



A. Remove the OEM lower air Dam by popping out the plastic clips.





Installation Instructions

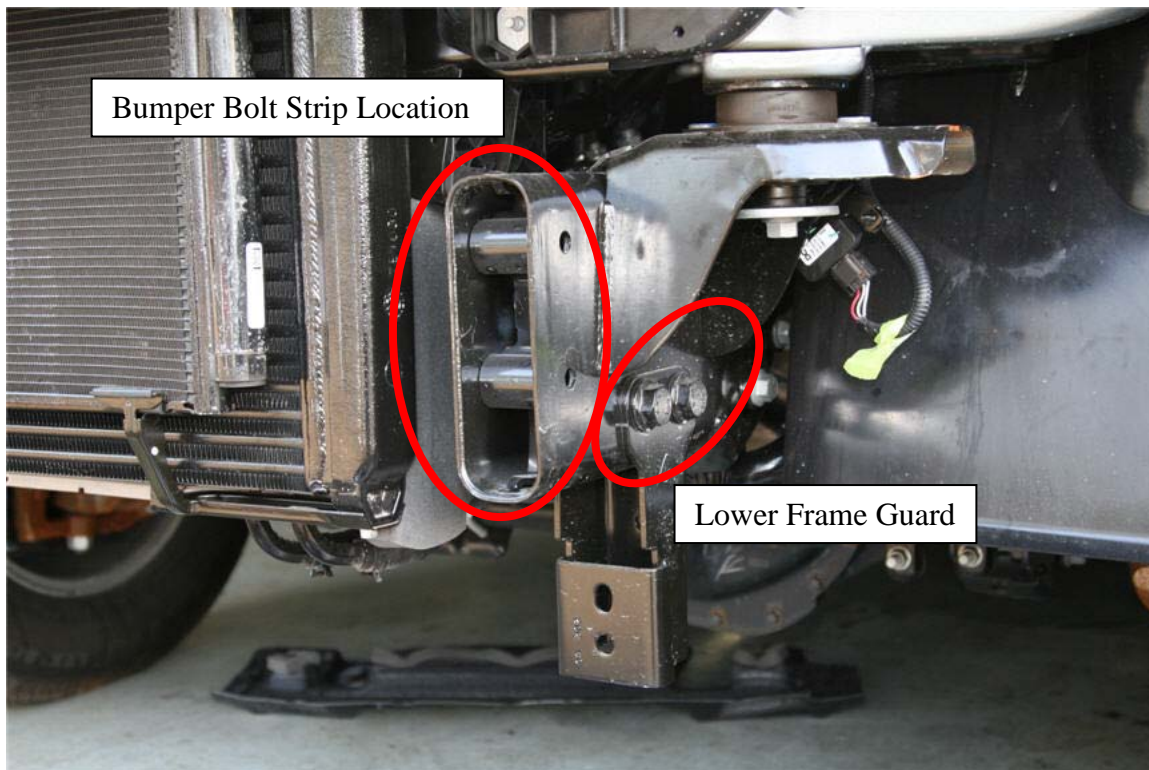
2010+ Ram HD(2500, 3500, 4500, 5500) Front Winch Bumper

Product Number: A2451, A2452, A2450

Application: 2010+ Ram 2500, 3500, 4500, & 5500 Trucks

B. Diesel Models Only: Remove the 10mm bolts holding the top of the intercooler to the radiator support.

C. Remove four 18mm nuts and two bolt strip holding the OEM bumper to the frame rails. Diesel Only: Move on side of the intercooler at a time to remove the bolt strips BE CAREFUL NOT TO DAMAGE THE INTERCOOLER FINS.



D. Remove the OEM Bumper and set aside.

E. Re-install the two bolts holding the top of the intercooler to the radiator supports.

F. Remove the Lower Frame Guards from using a 24mm socket and wrench.





Installation Instructions

2010+ Ram HD(2500, 3500, 4500, 5500) Front Winch Bumper

Product Number: A2451, A2452, A2450

Application: 2010+ Ram 2500, 3500, 4500, & 5500 Trucks

IV. Lights and Wiring Installation

A. Remove headlights following owners manual. On each side, tap into the three turn indicator wires using supplied tap connectors. Use a test light to verify the wires to tap into.

Driver Side Turn Indicator at Headlight

OEM (Running) →White Fab Fours

OEM (Turn) →Red Fab Fours

OEM (Ground) →Green Fab Fours

Passenger Side Turn Indicator at Headlight

OEM (Running) →White Fab Fours

OEM (Turn) →Red Fab Fours

OEM (Ground) →Green Fab Fours

Fog Lamp

OEM (Power) →Red Fab Fours

OEM (Ground) →Green Fab Fours

B. Connect supplied turn indicator wiring harnesses to tap connectors following wiring tested in step above.

C. Replace headlights and grill in reverse order of removal.

D. Tap into OEM fog light harness using two supplied tap connectors. Verify with a Test Light.

Fog Lamp

OEM (Power) →Red Fab Fours

OEM (Ground) →Green Fab Fours





Installation Instructions

2010+ Ram HD(2500, 3500, 4500, 5500) Front Winch Bumper

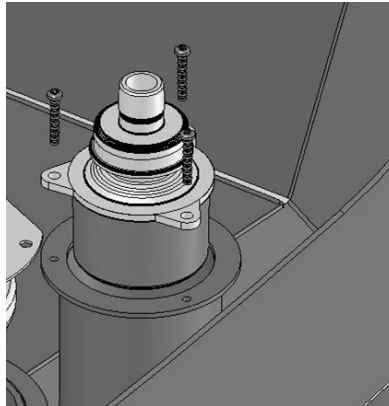
Product Number: A2451, A2452, A2450

Application: 2010+ Ram 2500, 3500, 4500, & 5500 Trucks

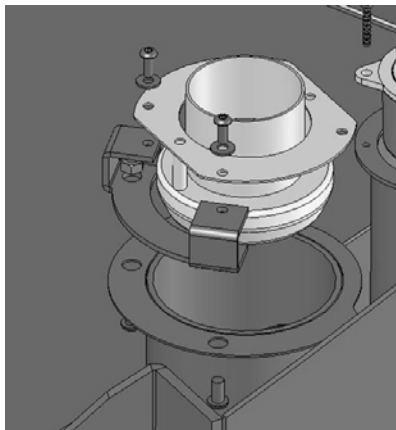
E. Connect supplied fog lamp wiring harness to tap connectors following wiring diagram.

F. Run passenger side fog lamp supply wires across bottom of bumper and tap into Fab Fours driver side fog lamp wires.

G. Install turn indicators into outside bumper light pockets using three self-tapping screws per side. Note: verify that "TOP" lettering on turn indicator is facing top of bumper.



H. Install fog lamp brackets onto inner light pockets using two bolts and nuts per side and attach running light to bracket as shown using two bolts, washers, and nuts per side. Verify that light adjustment screw is facing downward before tightening fully.





Installation Instructions

2010+ Ram HD(2500, 3500, 4500, 5500) Front Winch Bumper

Product Number: A2451, A2452, A2450

Application: 2010+ Ram 2500, 3500, 4500, & 5500 Trucks

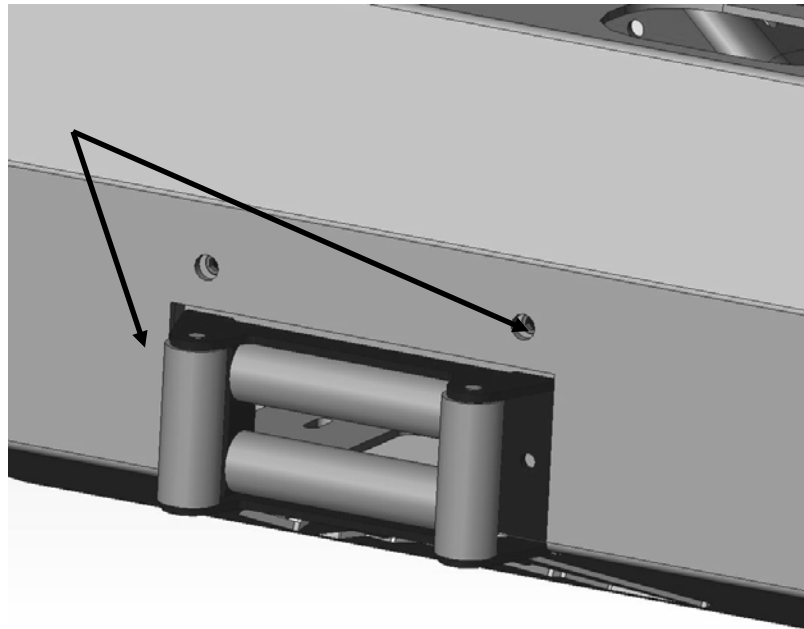
V. Winch Bumper Installation

NOTE: The Following Installation steps apply to the installation of the Bumper to the vehicle. **PLEASE READ THE ENTIRE MANUAL BEFORE ATTEMPTING INSTALLATION!** Ignoring these steps will increase your probability of scratching the vehicle during product Installation!

A. Remove the Bumper from the shipping carton. Lay all items out on a blanket to prevent damage to the powder coating.

B. OPTIONAL: If installing winch and roller fairlead (neither provided) into bumper, do it at this time. Bottom bolts (not provided) go through fairlead, then into winch. Thread 7/16" cap screws through hole in front bumper and into winch body.

C. NOTE: Winch should be bolted to **FRONT FACE** of the bumper in four places, and can be bolted to winch tray if so desired with two additional fasteners.





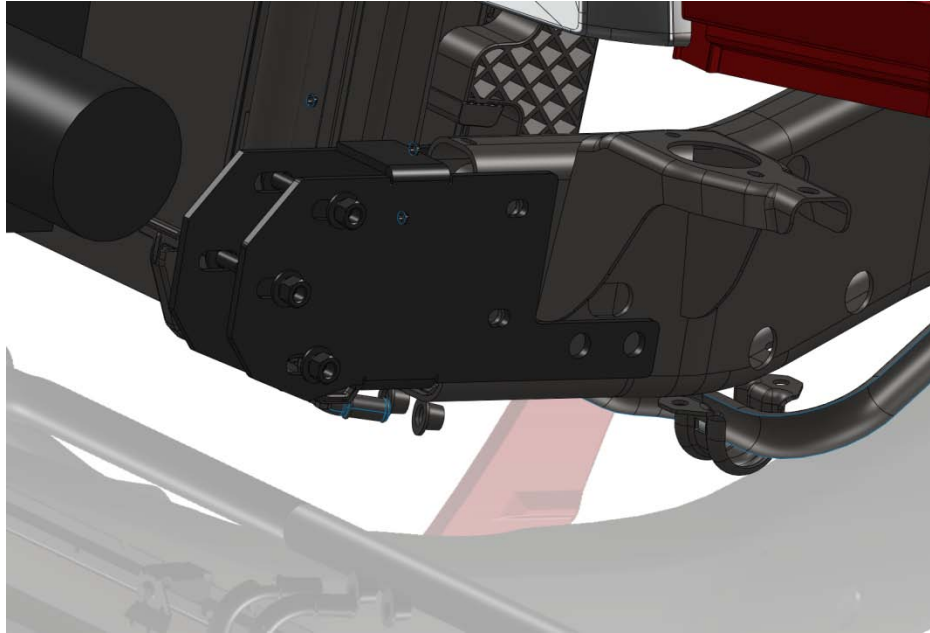
Installation Instructions

2010+ Ram HD(2500, 3500, 4500, 5500) Front Winch Bumper

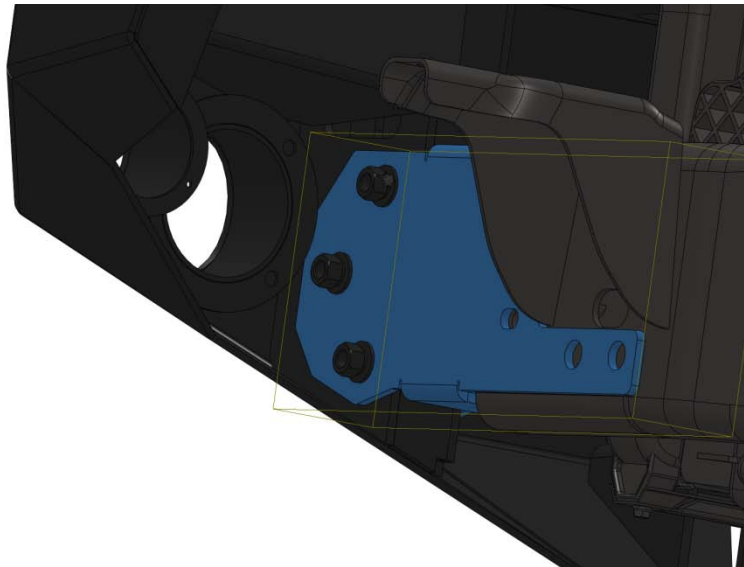
Product Number: A2451, A2452, A2450

Application: 2010+ Ram 2500, 3500, 4500, & 5500 Trucks

D. Install the Frame mounts to the frame using the OEM hardware as shown below. Do not Fully Tighten.



E. With the help of friends carefully lift the bumper into place lining up the mount towers into the previously installed frame mounts. Use the supplied 1/2" hardware as shown below. Do Not Fully Tighten





Installation Instructions

2010+ Ram HD(2500, 3500, 4500, 5500) Front Winch Bumper

Product Number: A2451, A2452, A2450

Application: 2010+ Ram 2500, 3500, 4500, & 5500 Trucks

F. Using either the help of friends or a wood block on a floor jack under the bumper, locate the bumper to a .5" gap below the grill and headlights. Also align the bumper to the fenders from the side. Fully Tighten All bolts.

G. Optional: Trim Plastic Inner Fenders to match the bumper lines.

VI. Maintenance/Care

- Periodically check and tighten all nuts.
- Stripped, fractured, or bent bolts or nuts need to be replaced.
- Periodically grease the tire carrier pivot.
- Periodically check the tension of the latch hook..

VII. Contact Information

Fab Fours Inc.
10424 Rodney St.
Pineville, NC 28134

Phone (866)-385-1905
Fax (970)-385-1914
Email Support@fabfours.com



More than

Better than expected

expected...

