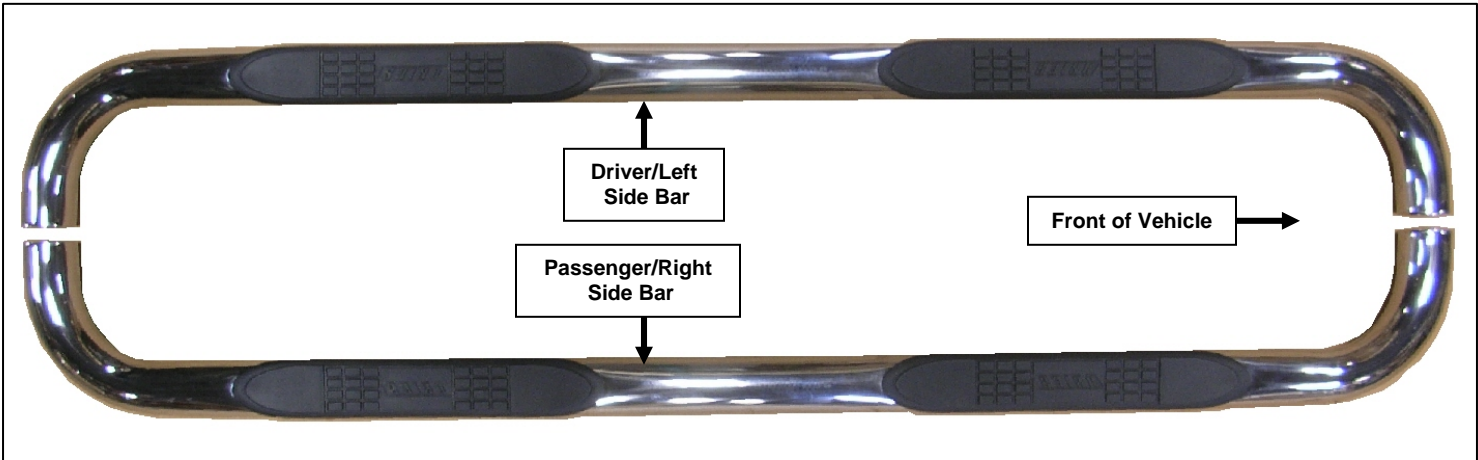


INSTALLATION INSTRUCTIONS
SIDEBAR
2001- 2003 FORD F-150/250 LT DUTY, SUPERCREW
PART NUMBER # 203009 / 203009-2

PARTS LIST:

1	Driver/Left Sidebar	8	10mm ID x 26mm OD Flat Washers
1	Passenger/Right Sidebar	8	10mm Lock Washers
1	Driver/Left Front Mounting Bracket	8	10mm Hex Nuts
1	Passenger/Right Front Mounting Bracket	4	12mm x 60mm Hex Bolts
1	Driver/Left Rear Mounting Bracket	4	12mm Lock washers
1	Passenger/Right Rear Mounting Bracket	4	12MM ID X 31MM OD Flat Washers
4	10mm Double Bolt Plates		



Driver/Left Side Front Mounting Bracket

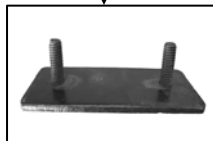
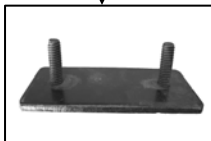
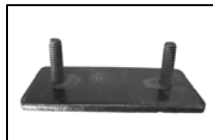
Passenger/Right Side Front Mounting Bracket



Driver/Left Side Rear Mounting Bracket



Double Bolt Plates



Passenger/Right Side Rear Mounting Bracket



PROCEDURE:

- 1. REMOVE CONTENTS FROM BOX. VERIFY ALL PARTS ARE PRESENT. READ INSTRUCTIONS CAREFULLY BEFORE STARTING INSTALLATION.**
2. Starting on the driver/left side of vehicle from the inner rocker panel remove the plastic covers **(Fig 1)**, Insert (1) Double Bolt Plate into factory slotted hole **(Fig 2)**.
3. Select the Driver/left front mounting brackets from the list of parts above, Hold Double Bolt Plate from one side while you position and attach Mounting Bracket to opposite side. Once you attach one bolt, proceed to attach the second bolt on the Double Bolt Plate using the included (2) 10mm Hex Nuts, (2) 10mm Lock Washers, and (2) 10mm Flat Washers **(Fig 3 & 4)**. Snug but do not tighten hardware at this time.
4. Repeat steps 2 and 3 for driver side rear Mounting Bracket. Snug but do not tighten hardware at this time
5. Once the Mounting Brackets are partially mounted, carefully position Sidebar onto Mounting Brackets. Attach Sidebar to Brackets using the included (2) 12mm X 60mm Hex Head Bolts, (2) 12mm Lock Washers, and (2) 12mm Flat Washers **(Fig 5)**. Snug but do not tighten hardware at this time
6. Level and adjust Sidebar; then tighten all hardware at this time.
7. Repeat steps 2 – 6 for Passenger/Right Sidebar.
8. Do periodic inspections to the installation to make sure all hardware is secure and tight.

To protect your investment, wax this product after installing. Regular waxing is recommended to add a protective layer over the finish. Do not use any type of polish or wax that may contain abrasives that could damage the finish.

For stainless steel: Aluminum polish may be used to polish small scratches and scuffs on the finish. Mild soap may be used also to clean the Sidebar.

For gloss black finishes: Mild soap may be used to clean the Sidebar.

FRONT DRIVER/LEFT SIDE SHOWN

