



INSTALLATION INSTRUCTIONS
HONDA PILOT
PART #206003/206003-2

PARTS:

- 2- SIDEBARS
- 2- FRONT BRACKETS
- 2- REAR BRACKETS
- 2- 3/8 T BOLTS (SMALL)
- 2- 3/8 T BOLTS (LARGE)
- 4- 3/8" HEX NUTS
- 4- 1/2 x 2" HEX BOLTS
- 4- 3/8" LOCK WASHERS
- 4- 7/16" LOCK WASHERS
- 4- 3/8" x 1 SELF TAPPING SCREWS
- 6- 1/2" FLAT WASHERS
- 6- 7/16" FLAT WASHERS

1. MAKE SURE ALL ITEMS ARE WITHIN BOX.
2. UNDER THE CAB OF THE PILOT LOCATE THE HOLE INSIDE THE FRAME WHERE THE REAR SUPPORT BRACKETS WILL REST. FOR REAR BRACKET. USE SMALLER 3/8 T BOLTS PLATE, ALONG WITH HARDWARE, TO ATTACH BRACKET TO FRAME. SEE FIGURE 1.
3. LOCATE FRONT BRACKET HOLES. USE LARGE 3/8" T BOLTS, WITH 3/8 HARDWARE, AND 7/16 SELF TAPPERS TO ATTACH FRONT BRACKET. SEE FIGURE 3 & 4.
4. USING THE 1/2" HARDWARE BOLT SIDEBAR TO THE MOUNTING BRACKETS. 1/2" BOLTS SHOULD BE TORQUED TO 65LBS.

Figure 1



Rear bracket

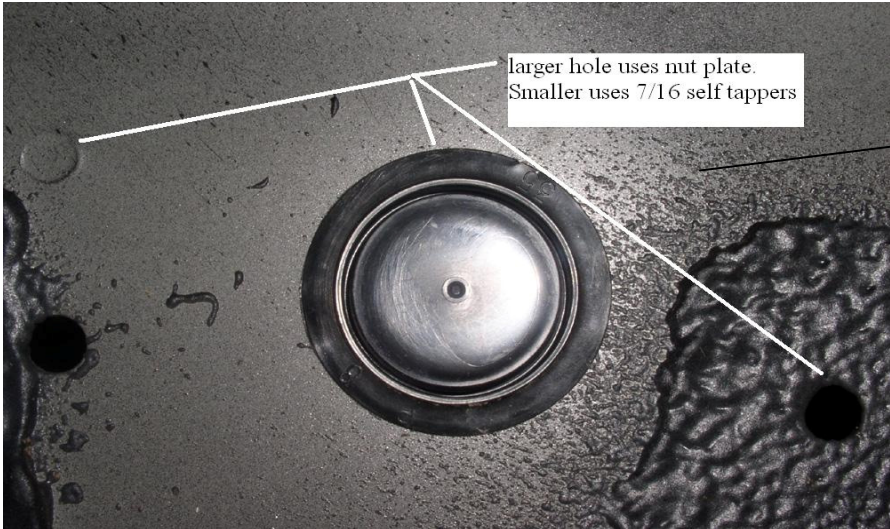


Figure 3
You may need start self tapping bolt to get with a hammer.

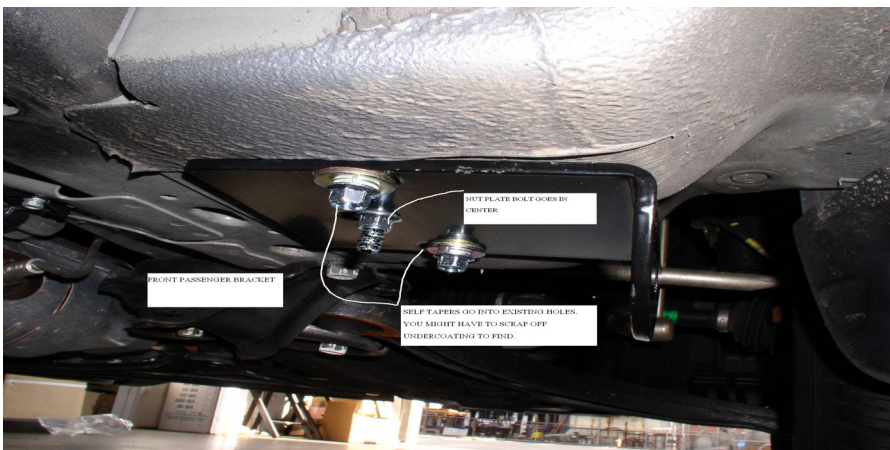


Figure 4
Front bracket driver side

HONDA PILOT

