



491 W. Garfield Ave., Coldwater, MI 49036

Phone: 517-279-2135

Web/live chat: www.bds-suspension.com

E-mail: tech-bds@ridefox.com

Part#: 124611

Product: Front Adjustable Track Bar

Application: Jeep XJ, ZJ

READ AND UNDERSTAND ALL INSTRUCTIONS AND WARNINGS PRIOR TO INSTALLATION OF SYSTEM AND OPERATION OF VEHICLE.

SAFETY WARNING BDS Suspension Co. recommends this system be installed by a professional technician. In addition to these instructions, professional knowledge of disassembly/ reassembly procedures and post installation checks must be known.

INSTALLATION INSTRUCTIONS

1. Park the vehicle on a clean, flat surface and block the rear wheels for safety.
2. Disconnect the positive and negative battery cables from the battery.
3. Disconnect the front track bar from the passenger's side of the axle. Discard hardware.
4. Raise the front of the vehicle with a hydraulic jack and support with jack stands behind the lower control arm mounts.
5. Remove the driver's side front wheel.
6. Locate and remove the four bolts/nuts mounting the front track bar bracket to the driver's side frame. This can be done without disconnecting the track bar from the bracket. Remove the track bar/ bracket from the vehicle. Save frame mount hardware.
7. Remove the steering stabilizer mounting bolt from the passenger's side axle mount and remove the stabilizer from the mount.
8. Locate the top of the original stabilizer mount on the passenger's side of the axle. Be sure it is free of grease, oil, rust, etc.
9. Measure back from the front face of the factory stabilizer mount bracket toward the rear $\frac{3}{4}$ " and mark on the top of the bracket. Make a line along the top of the bracket, parallel to the front face at the $\frac{3}{4}$ " marked distance (Fig 1). This will be a reference line for installing the new stabilizer mount/support gusset.

PARTS LIST

Part #	Qty	Description
A161	1	Adjustable Track Bar Assembly
01398	1	Track Bar Bracket
M02888RB	2	Bushing
51792	1	Sleeve - 0.625 x 0.060 x 1.375
516	1	Grease Fitting
01549	1	Stabilizer Bracket
440	1	Bolt Pack

Bolt Pack 440

1	12mm-1.75 x 80mm bolt class 10.9
1	12mm-1.75 prevailing torque nut
1	1/2"-13 x 2-1/2" bolt grade 8
1	1/2"-13 prevailing torque nut
4	1/2" SAE washer

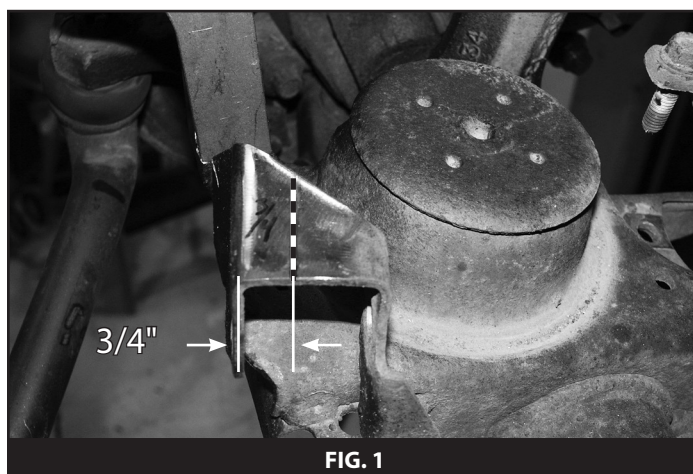


FIG. 1

10. Position the new provided stabilizer mount (01549) on the top of the original mount so that the hole is to the driver's side and the front surface is aligned to the line marked on the top of the OE bracket. The stabilizer will butt up to the passenger's side sway bar link mount (Fig 2).



11. Check that the stabilizer mount is perpendicular to the top of the OE mount and positioned against the link mount and tack weld in place. Double check the position and finish weld the mount to the OE bracket and the link mount. Note: Be sure to disconnect the battery before welding.
12. With all welding complete allow the brackets to cool and then paint any raw metal to prevent corrosion.
13. Install the provided new track bar bracket (01398) to the driver's side frame with the original hardware (Fig 3). Torque the factory hardware to 60 ft-lbs starting with the lower bolts.



14. Grease and install the provided track bar bushings (M02888RB) and sleeve (51792) in the new track bar assembly (A161). The exact length will be adjusted at the end of the installation. Install the provided grease fitting (516) in the adjustable end of the track bar.
15. Install the new track bar assembly to the original steering stabilizer axle mount with a 1/2" x 2-1/2" bolt, nut and washers so the track bar runs up toward the new frame mount. Leave hardware loose. The frame end will be attached at the end of the installation.
16. Attach the loose end of the stabilizer cylinder to the front face of the new stabilizer bracket on the axle with the OE hardware. Run the bolt from the back forward and torque to 60 ft-lbs.
17. Install the driver's side wheel and lower the vehicle to the ground.
18. Bounce the front of the vehicle to settle the suspension.
19. Visually check to see that the front axle is centered under the vehicle. Turn the steering wheel back and forth to help center.
20. Adjust the track bar until the proper length is set so the track bar end will mount into the new frame bracket. Fasten in the mount with a 12mm x 80mm bolt, nut and 1/2" SAE washers (Fig 4). Torque hardware to 65 ft-lbs.



21. Check that the track bar end is square in the frame mount and lock off the jam nut securely.
22. Torque the track bar axle mount hardware to 65 ft-lbs.
23. Check all hardware for proper torque.
24. Check hardware after 500 miles and after any offroad use.