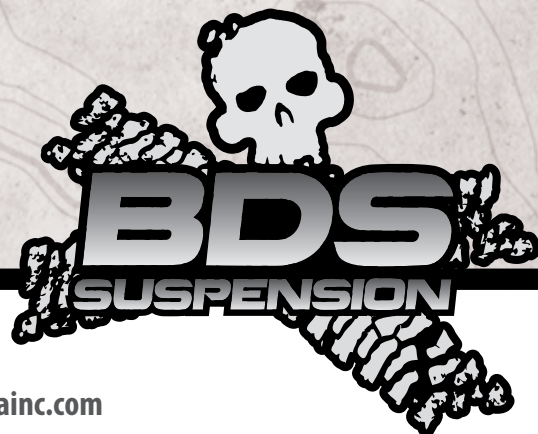


Dual Steering Stabilizer

Jeep Wrangler JK | 2007-2016

Part # 55378

Rev. 061616



491 W. Garfield Ave., Coldwater, MI 49036 • Phone: 517-279-2135

Web/live chat: www.bds-suspension.com • E-mail: tech-bds@sporttruckusainc.com

SAFETY WARNING

BDS Suspension Co. recommends this system be installed by a professional technician. In addition to these instructions, professional knowledge of disassembly/ reassembly procedures and post installation checks must be known.

Box Kit		
Part #	Qty	Description
01588	1	Center Axle Bracket
02980	1	Drv Tie Rod Bracket
02981	1	Pass Tie Rod Bracket
A226	1	Nameplate Mount
382340334RB	2	3/8" x 2-3/4" x 3-3/4" U-bolt
561580214RB	2	5/16" x 1-5/8" x 2-1/4" U-bolt
561120214RB	4	5/16" x 1-1/2" x 2-1/4" U-bolt

Bolt Packs		
Part #	Qty	Description
304	1	Bolt Pack
	8	1/4" USS Washer
	4	3/8" SAE Washer
	4	3/8" Prevailing torque nut
	8	5/16" Prevailing torque nut
322	1	Bolt Pack
	2	1/2" x 2-1/2" bolt
	2	1/2" Prevailing torque nut
	4	1/2" SAE Washer
337	1	Bolt Pack
	2	1/2" x 2-3/4" bolt
	2	1/2" Prevailing torque nut
	4	1/2" SAE Washer

INSTALLATION INSTRUCTIONS

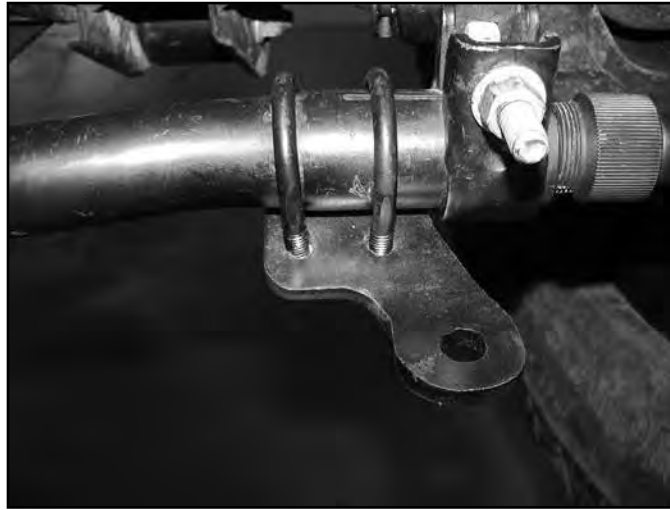
1. Park the vehicle on a clean, level surface, block the rear wheels for safety and center wheels.
2. Remove OE stabilizer.
3. Loosely install the center bracket (01588) on the bottom of axle with the 3/8" U-Bolts, nuts, and washers. The mounting surface of the stabilizer should be level. Slide the bracket until it's 1/4" away from the differential (Fig 1).

FIGURE 1



4. Attach driver's side stabilizer bracket to bottom side of tie rod next to the clamp (Fig. 2) with provided U-bolts so the stabilizer mounting hole offsets to the outside. Leave hardware loose.

FIGURE 2



5. Loosely attach the passenger side stabilizer bracket to bottom side of tie rod link similar to the driver side with the provided 5/16" U-bolts and hardware. Leave hardware loose.
6. Install the bushings and 1/2" ID sleeves into the stabilizers.
7. Loosely attach the rod end of the stabilizer cylinders to the center bracket with the nameplate using the 2-3/4" long 1/2" hardware from bolt pack 337. The center bracket mounts inside the nameplate.

Models with at least 2" of bump stop extension AND the stock pitman arm:

Install the cylinders on top of the center bracket (Fig 3).

Models with a dropped pitman arm OR no bump stop extension:

Install the stabilizer cylinders below the center bracket.

FIGURE 3



Failure to follow the proper installation location will result in damage to the steering stabilizers under full compression travel.

8. Attach the stabilizers to the top or bottom (depending on the previous step) of the tie rod mounts using the 2-1/2" bolts, nuts, and washers.
9. Adjust location until stabilizers are extended out equally and are in the desired position.

10. Torque hardware to following specifications:
 - 5/16" (small) U-bolts: 17 ft-lbs
 - 3/8" (large) U-bolts: 30 ft-lbs
11. Perform a steering sweep to check for stabilizer clearance and to ensure full steering motion.
12. Recheck fasteners after 500 miles of driving and at regularly scheduled maintenance intervals.



WE WANT TO SEE YOUR RIDE!

Grab photos of your BDS-equipped truck in action and send them in for a chance to be featured. Send it in to our Bad Ass Rides customer gallery at bds-suspension.com/bar and post them on the BDS Fan Page on Facebook at facebook.com/BDSSuspensions. Don't forget about your BDS swag! BDS offers t-shirts, hoodies, decals and more available on the BDS website or through your local BDS distributor.

TIME TO HAVE SOME FUN

Thank you for choosing BDS Suspension.

For questions, technical support and warranty issues relating to this BDS Suspension product, please contact your distributor/installer before contacting BDS Suspension directly.