

Dual Steering Stabilizer

Dodge | 2019 3500 Pickup | 2019 2500 Pickup

Part #: 55382

Rev. 080619



491 W. Garfield Ave., Coldwater, MI 49036 • Phone: 517-279-2135

Web: www.bds-suspension.com • E-mail: tech-bds@ridefox.com

SAFETY WARNING

BDS Suspension Co. recommends this system be installed by a professional technician. In addition to these instructions, professional knowledge of disassembly/ reassembly procedures and post installation checks must be known.

55382		
Part #	Qty	Description
01566	1	Dual Steering Stabilizer - center brkt
01567	1	Dual Steering Stabilizer - DRV brkt
01568	1	Dual Steering Stabilizer - PASS brkt
01569	1	Dual Steering Stab. U-bracket
98	2	3/8" long spacer washer
561580214RB	2	5/16" x 1-5/8" x 2-1/4 U-bolt
Assembly	1	Front Name Plate Assembly
01571	1	Name mounting plate
01572	1	Name plate (stainless steel)
97525A420	3	Rivets (1/8" Dia x 0.251-0.312)

55382		
335	1	Bolt pack
	2	12mm-1.75 x 70mm bolt - class 8.8 - clear zinc
	2	12mm-1.75 x 75mm bolt - class 8.8 - clear zinc
	2	12mm-1.75 x 150mm bolt - class 8.8 - clear zinc
	2	7/16" USS Washer - clear zinc
	10	12mm flat washer - clear zinc
	6	12mm-1.75 Prevailing torque nut - clear zinc
	4	5/16"-18 nylock nut - clear zinc
	4	5/16" SAE washer - clear zinc
	2	10mm-1.50 x 30mm Bolt - class 10.9 - clear zinc
	2	10mm flat washer - clear zinc



TROUBLESHOOTING INFORMATION FOR YOUR VEHICLE

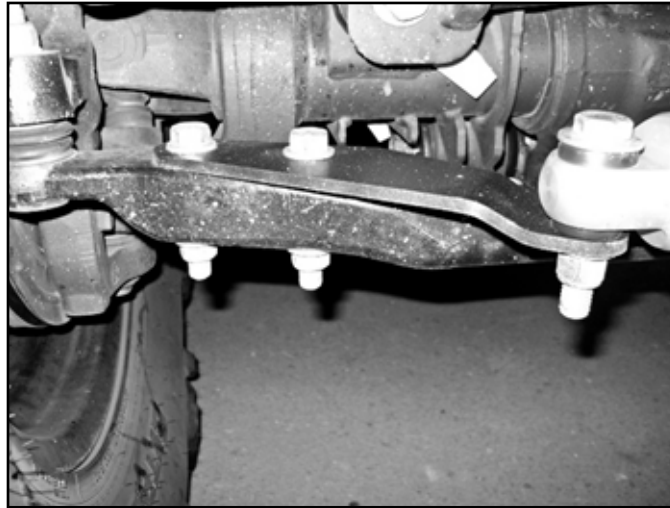
1. This kit is designed to be used with 4" and larger lift height.
2. Dual stabilizer setup will increase dampening forces, on Ram 2500 /3500's it may be necessary to manually return the steering wheel to center (approximately 5-10 degrees) after turns due to increased resistance. This kit is specifically recommended for oversized tires or wheels with a large negative offset.
3. Optional Fox 2.0 stabilizer cylinders may come with a schrader valve on the body. While this makes it possible to adjust the air pressure in the cylinder, we **highly** recommend leaving them set at the preset pressure. These cylinders are properly charged with nitrogen when built and should never require additional charge or adjustment. Excessive pressure can damage the cylinder and/or adversely affect performance.

**TECH
TIPS**

INSTALLATION INSTRUCTIONS

1. Park vehicle on clean flat and level surface, block rear wheels for safety. Center the steering wheel so both wheels are facing straight ahead.
2. Remove the factory steering stabilizer. Remove the factory mounting brackets that attach to the tie rod and the axle. Retain all hardware.
3. Install the passenger's side stabilizer mount to the tie rod with the factory hardware. The offset will go down. Tighten bolts to 60 ft-lbs. (Fig 1)

FIGURE 1



4. Install new center bracket with factory bolts at the bottom side, install new 10mm x 30mm bolts with spacer washers into the top mount. Attach rear axle tube bracket with hardware. Tighten 10mm x 30mm to 30ft-lbs, 12mm x 150mm with 12mm (small OD washers) to 60ft-lbs. (Fig 2a, 2b)

FIGURE 2A

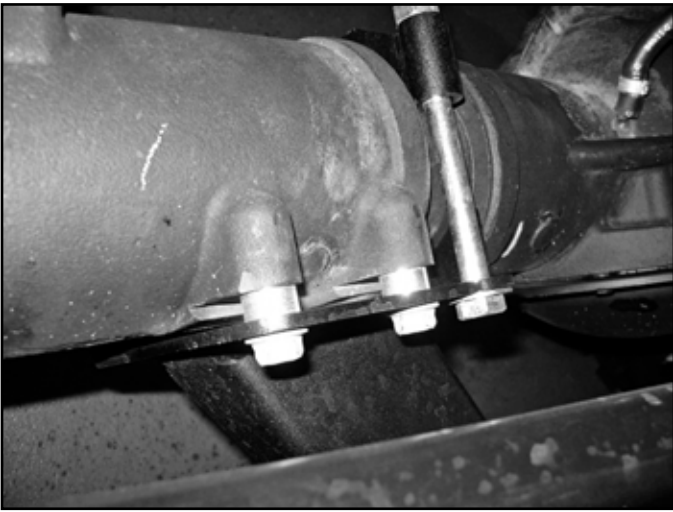
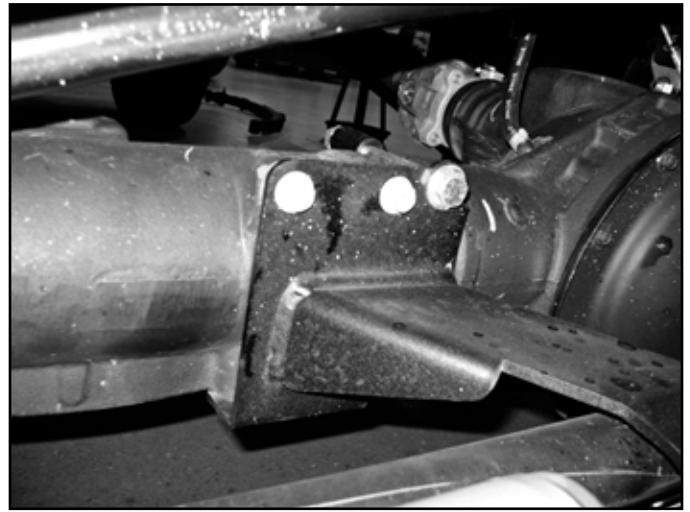
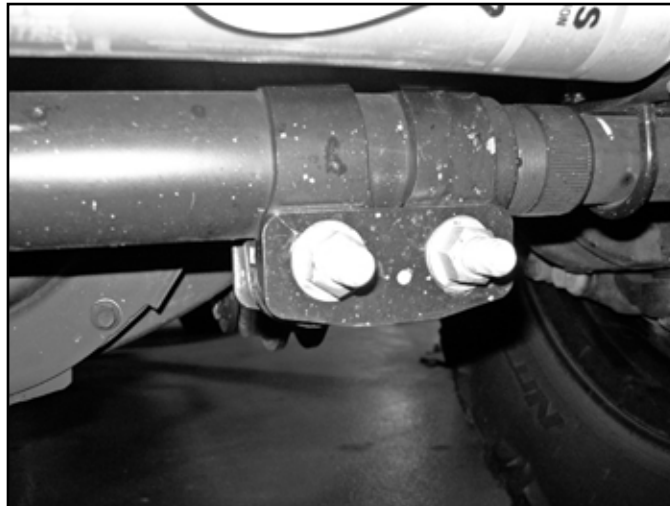


FIGURE 2B



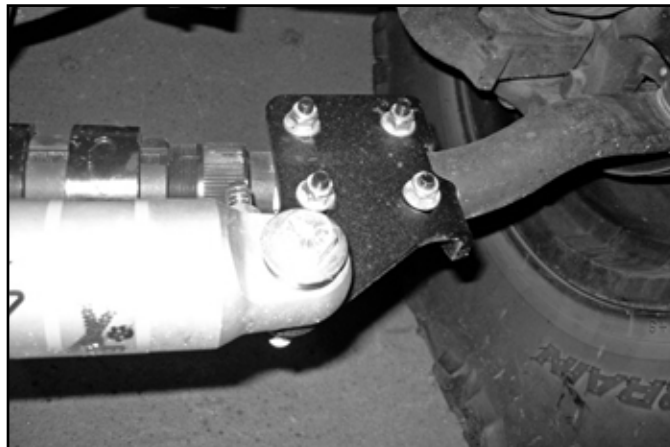
5. Remove the tie rod adjusting bolts and run them from front to back for stabilizer clearance. (Fig 3)

FIGURE 3



6. Install the driver's side stabilizer bracket to the top side of the tie rod end. Measure the distance between centers of the stabilizer mounts and set the same as the passenger's side. Tighten u-bolt hardware to 20 ft-lbs. Do not over torque, or the bracket may become deformed. (Fig 4)

FIGURE 4



7. Grease and install bushings with sleeves into the steering stabilizers
8. Attach the steering stabilizer's to the mounts with new 12mm hardware. For 4-6" of lift height mount the steering stabilizers to the BOTTOM side of the mounts, 8" kits can be mounted to the top side as shown in the figure. The center bracket is wide and will mount on the opposite side of the center bracket. The outside hardware uses 12mm x 70mm with large diameter USS washer next to the bushing, center bracket uses 12mm x 75mm with 12mm (small OD washers). Tighten 12mm hardware to 50 ft-lbs. The rod end of the stabilizer will go in the center bracket. (Fig 5a, 5b) Note: If using with BDS adjustable trackbar, do not use the hardware in this location. There will be interference between the bolt and and trackbar under compression.

FIGURE 5A

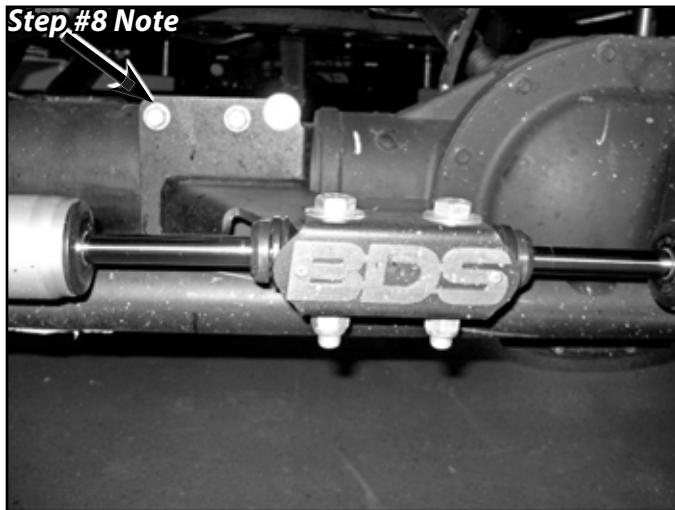
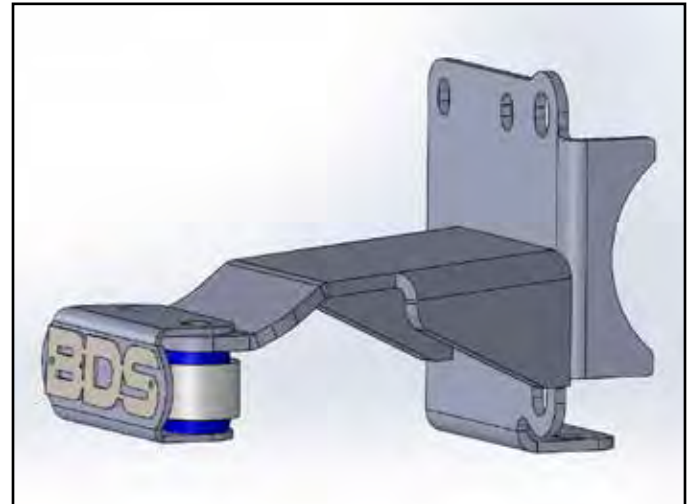


FIGURE 5B



9. Cycle the steering and check for adequate stroke of the steering stabilizer. Check hardware for proper torque, recheck again after 500 miles.

TIME TO HAVE SOME FUN

Thank you for choosing BDS Suspension.

For questions, technical support and warranty issues relating to this BDS Suspension product, please contact your distributor/installer before contacting BDS Suspension directly.



WE WANT TO SEE YOUR RIDE!

Grab photos of your BDS-equipped truck in action and send them in for a chance to be featured. Send it in to our Bad Ass Rides customer gallery at bds-suspension.com/bar and post them on the BDS Fan Page on Facebook at facebook.com/BDSSuspensions. Don't forget about your BDS swag! BDS offers t-shirts, hoodies, decals and more available on the BDS website or through your local BDS distributor.