

# INSTALLATION GUIDE



Part#: 128252

**HARDCORE LIMITED LIFETIME WARRANTY**

**Control Arms**

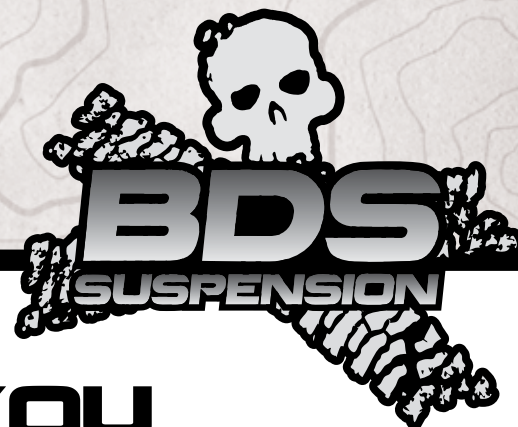
**Toyota Tacoma 4WD | 2005-2016**

Rev. 090817

491 W. Garfield Ave., Coldwater, MI 49036 • Phone: 517-279-2135

E-mail: [tech-bds@sporttruckusainc.com](mailto:tech-bds@sporttruckusainc.com)

# Read And Understand All Instructions And Warnings Prior To Installation Of System And Operation Of Vehicle.



## THANK YOU

Your truck is about to be fitted with the best suspension system on the market today. That means you will be driving the baddest looking truck in the neighborhood, and you'll have the warranty to ensure that it stays that way for years to come.

Thank you for choosing BDS Suspension!

### BEFORE YOU START

BDS Suspension Co. recommends this system be installed by a professional technician. In addition to these instructions, professional knowledge of disassembly/ reassembly procedures and post installation checks must be known.

### FOR YOUR SAFETY

Certain BDS Suspension products are intended to improve off-road performance. Modifying your vehicle for off-road use may result in the vehicle handling differently than a factory equipped vehicle. Extreme care must be used to prevent loss of control or vehicle rollover. Failure to drive your modified vehicle safely may result in serious injury or death. BDS Suspension Co. does not recommend the combined use of suspension lifts, body lifts, or other lifting devices. You should never operate your modified vehicle under the influence of alcohol or drugs. Always drive your modified vehicle at reduced speeds to ensure your ability to control your vehicle under all driving conditions. Always wear your seat belt.

### BEFORE INSTALLATION

- Special literature required: OE Service Manual for model/year of vehicle. Refer to manual for proper disassembly/reassembly procedures of OE and related components.
- Adhere to recommendations when replacement fasteners, retainers and keepers are called out in the OE manual.
- Larger rim and tire combinations may increase leverage on suspension, steering, and related components. When selecting combinations larger than OE, consider the additional stress you could be inducing on the OE and related components.
- Post suspension system vehicles may experience drive line vibrations. Angles may require tuning, slider on shaft may require replacement, shafts may need to be lengthened or trued, and U-joints may need to be replaced.
- Secure and properly block vehicle prior to installation of BDS Suspension components. Always wear safety glasses when using power tools.
- If installation is to be performed without a hoist, BDS Suspension Co. recommends rear alterations first.
- Due to payload options and initial ride height variances, the amount of lift is a base figure. Final ride height dimensions may vary in accordance to original vehicle attitude. Always measure the attitude prior to beginning installation.



Visit [560plus.com](http://560plus.com) for more information.

### TIRES AND WHEELS

N/A



### BEFORE YOU DRIVE

Check all fasteners for proper torque. Check to ensure for adequate clearance between all rotating, mobile, fixed, and heated members. Verify clearance between exhaust and brake lines, fuel lines, fuel tank, floor boards and wiring harness. Check steering gear for clearance. Test and inspect brake system.

Perform steering sweep to ensure front brake hoses have adequate slack and do not contact any rotating, mobile or heated members. Inspect rear brake hoses at full extension for adequate slack. Failure to perform hose check/ replacement may result in component failure. Longer replacement hoses, if needed can be purchased from a local parts supplier.

Perform head light check and adjustment.

Re-torque all fasteners after 500 miles. Always inspect fasteners and components during routine servicing.



# CONTENTS OF YOUR KIT

## 128252 Box Kit

Part #	Qty	Description
A264	1	Drv Assembly
02841	1	UCA - DRV
K80811	1	Ball Joint
MB05B714620	2	UCA Bushing (Tacoma)
A265	1	Pass Assembly
02842	1	UCA - PASS
K80811	1	Ball Joint
MB05B714620	2	UCA Bushing (Tacoma)
B1185	1	Bag Kit
02911	2	Ball Joint Cap
9452K145	2	o-ring (#139)
45NA53	1	Grease Packet

## 128252 Box Kit

967	1	Bolt Pack
	2	Wire Clip
	2	1/4"-20 x 5/8" bolt grade 5 cz
	2	1/4"-20 serrated edge flanged nut
	2	1/4" SAE Clear Zinc Washer

## TROUBLESHOOTING INFORMATION FOR YOUR VEHICLE

1. Not recommended for a standard 2wd truck
2. Medium-strength thread-lock (blue loctite) is recommended on all bolts.
3. Arms are designed to work with Fox Coilovers that require upper control arms and may not work with all aftermarket spacer lifts / lift kits. The ball joint angle has been indexed to allow for max range of motion with 2" lifts. If the upper ball joint is unable to be connected without preloading the suspension, a different spacer lift is recommended that will not over-droop the suspension system.
4. Ball joint cap must be removed for maintenance of ball joint. Remove cap to access grease zerk. Grease at regular maintenance intervals.
5. Arms are designed to work with 2" of lift, and are not recommended for 0" of lift.



**TECH  
TIPS**

# INSTALLATION INSTRUCTIONS

## INSTALLATION INSTRUCTIONS

1. Park vehicle on clean, flat, and level surface. Block the rear wheels for safety.
2. Raise the front of the vehicle and support frame rails with jack stands.
3. Remove the front wheels.
4. Disconnect the ABS wire from the upper control arm (Fig 1).

**FIGURE 1**



5. It is recommended to disconnect the ABS wire from the clips on the inside of the fenderwell to prevent over-extending of the ABS wire. Do not allow the brake line to hold the steering knuckle assembly in place.
6. Remove the upper control arm from vehicle. The inner fenderwell sheet metal may need to be slightly formed to get the bolt to be removed easily. Reference factory service manual if necessary.
7. Install new control arm with factory hardware. Snug, but do not torque bolts. Attach to the steering knuckle at this time with new hardware. Tighten ball joint hardware to 81 ft-lbs. Install cotter pin.
8. GREASE BALL JOINT at this time! Install the o-ring on cap with grease from the included grease packet to aid installation. Install cap. Cap must be removed to access grease fitting for future maintenance.
9. Remove the factory ABS mounting bracket from the ABS line. Attach the ABS wire to the control arm with new 1/4" hardware with new wire clip. Tighten to 15 ft-lbs. (Fig 2)

**FIGURE 2**



10. Reinstall wheels. Tighten to factory specification (83 ft-lbs). Lower vehicle to the ground. When vehicle is settled at ride height, torque the upper control arm hardware to 85 ft-lbs.
11. Arms give increased caster, a front end alignment is now required. Arms are not recommended for 0" of lift applications.
12. Recheck hardware after 500 miles of driving, grease ball joint by removing cap at 3,000 mile increments.



## **WE WANT TO SEE YOUR RIDE!**

Grab photos of your BDS-equipped truck in action and send them in for a chance to be featured. Send it in to our Bad Ass Rides customer gallery at [bds-suspension.com/bar](http://bds-suspension.com/bar) and post them on the BDS Fan Page on Facebook at [facebook.com/BDSSuspensions](https://facebook.com/BDSSuspensions). Don't forget about your BDS swag! BDS offers t-shirts, hoodies, decals and more available on the BDS website or through your local BDS distributor.

---

## **TIME TO HAVE SOME FUN**

### **Thank you for choosing BDS Suspension.**

For questions, technical support and warranty issues relating to this BDS Suspension product, please contact your distributor/installer before contacting BDS Suspension directly.

DIRECT-REPLACEMENT  
**INSTALLATION GUIDE**



**TOYOTA TACOMA (16+)**

985-62-000: 2.0 Performance Series Coil-Over Snap Ring IFP (Front)

**TOYOTA 4RUNNER (03-09) | TOYOTA FJ CRUISER (07-09)**

985-62-010: 2.0 Performance Series Coil-Over Snap Ring IFP (Front)

**TOYOTA 4RUNNER (10+), TOYOTA FJ CRUISER (10-14)**

985-62-001: 2.0 Performance Series Coil-Over Snap Ring IFP (Front)

**TOYOTA TACOMA (05-15)**

985-62-011: 2.0 Performance Series Coil-Over Snap Ring IFP (Front)



## BOX CONTENT

- Performance Series Snap-Ring Coilover Shock
- Molded Spring Seat
- Aluminum Spring Retainer
- Snap Ring
- Installation Manual
- Fox Sticker

## ONLINE MANUAL

FOX products are subject to continuous development and improvement. To find the most up to date product information such as color installation manuals, videos, and FAQs please visit, **[ridefox.com/manuals](http://ridefox.com/manuals)**

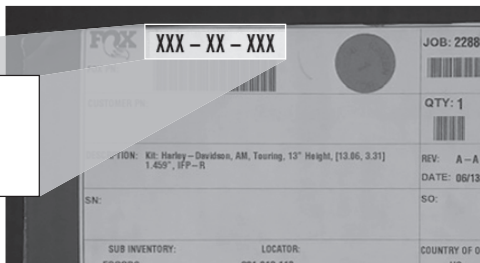
To locate the correct installation manual, use the 8-digit part number found on the end of the packaging box ( see illustration )

XXX-XX-XXX

## INSTALLATION GUIDE

Thank you for choosing FOX direct-replacement shocks for your vehicle. FOX products are designed, tested, and manufactured by the finest professionals in the industry.

FOX recommends that you become completely familiar with the handling characteristics of your modified vehicle before operating it under rigorous conditions, helping to avoid potential rollover situations and other loss of control events. FOX further recommends that you use appropriate protective equipment at all times when operating your vehicle.



## WARNINGS

- FOX direct-replacement, shocks should always be installed as a pair for maximum performance.
  - Proper installation and service procedures are essential for the safe and reliable installation of chassis parts, requiring the experience and tools specially designed for this purpose. Installation and maintenance procedures for this product must be performed by a qualified service technician, to avoid potentially unsafe vehicle handling characteristics, which may result in **SERIOUS INJURY or DEATH**.
  - Modifying your vehicle's suspension will change the handling characteristics of your vehicle. Under certain conditions, your modified vehicle may be more susceptible to loss of control or rollover, which can result in **SERIOUS INJURY or DEATH**. Thoroughly familiarize yourself with the modified vehicle handling characteristics before any rigorous vehicle operation. Wear body protective gear including head protection when appropriate.
- Installation of vehicle roll bars or cage is highly recommended.
- FOX direct-replacement, shocks are gas-charged and are highly pressurized. Placing shocks in a vise or clamp, applying heat, or attempting to open or service the shock without the proper tools and training can result in **SERIOUS INJURY or DEATH**. Do not attempt to modify, puncture or incinerate a FOX direct-replacement shock absorber.
  - Any attempt to misuse, misapply, modify, or tamper with any FOX product voids any warranty and may result in **SERIOUS INJURY or DEATH**.





## GUIDELINES

- Always use a chassis lift for the installation of shocks, and make certain that the raised vehicle is securely attached to the lift to prevent the vehicle from slipping, falling, or moving during the installation process.
- DO NOT install any FOX product without the necessary special tools, expertise and chassis lift, or you will subject yourself to the risk of **SERIOUS INJURY or DEATH**. If you elect to **not** use a chassis lift (which election may result in **SERIOUS INJURY or DEATH**), ensure that the vehicle is on level ground, that all tires on the ground during installation are blocked to prevent vehicle movement, that at least two tires are on the ground at all times, and that adequately secured jack stands are used to support the vehicle. NEVER get under the vehicle until you have checked to ensure that the vehicle will be stable during installation.
- FOX direct-replacement shocks are designed to fit your vehicle's shock mounts with no modifications with the exception of reservoir placement on specific models and applications.

## INSTRUCTIONS - FRONT

1. Please read the installation guidelines for instructions on how to properly lift and secure the vehicle.
2. Remove both front wheels.
3. Remove OEM coil-over:

\*For models equipped with Toyota Kinetic Dynamic Suspension System (KDSS). Support the hydraulic ram on the driver side of sway bar with a jack, then remove the (4) bolts securing the sway bar to the lower control arms.

3a. Using a 19mm wrench and socket, remove lower shock bolts, do not discard OEM hardware. (Fig 1)  
HINT: Slightly moving the brake caliper up and down will aid in bolt removal.  
(OE Torque: 61 ft-lbs)

3b. Using a 19mm socket, remove (2) bolts from each lower ball joint assembly. (Fig 2)  
DO NOT REMOVE CENTER NUT.  
Do not discard OEM hardware.  
(OE Torque: 118 ft-lbs)

3c. Draw a marker line on each side of the (2) lower control arm alignment cam bolts to reference alignment position. (Fig 3)

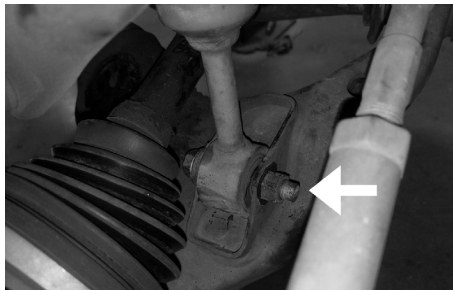


Fig. 1: Right side shown

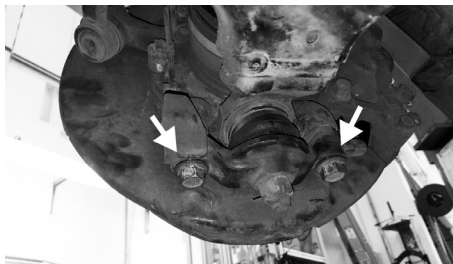


Fig. 2: Right side shown

3d. Loosen alignment fasteners on both sides of lower control arm (a bolt on the front of the arm and a nut on the rear) - DO NOT COMPLETELY REMOVE THE FASTENERS. (OE Torque: 100 ft-lbs) (Fig 3)

3e. Lower control arm should now swing down freely.

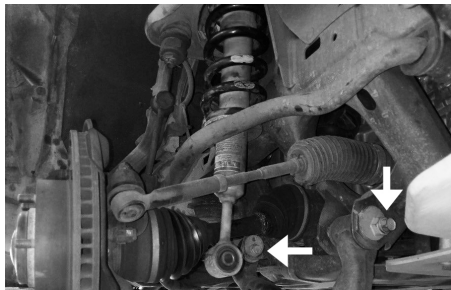


Fig. 3: Right side shown

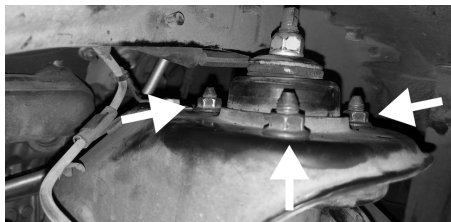


Fig. 4: Right side shown

3f. Using a 14mm wrench, remove the (3) nuts on top of each coil-over. (Fig 4) - DO NOT REMOVE THE CENTER NUT. Do not discard OEM hardware. (Fig 4) (OE Torque: 24 ft-lbs)

3g. Carefully lower the OEM coil-over and remove it from the vehicle, taking care not to damage steering or axle boots.



Fig. 5

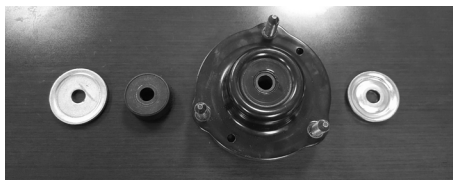


Fig. 6

#### 4. Remove OEM springs:

4a. Put OEM coil-over in spring compressor, and compress the spring to remove spring load from the coil-over top hat. (Fig 5) - **WARNING:** Follow all safety guidelines provided by the spring compressor manufacturer. Using a spring

compressor in an unsafe manner can lead to **SERIOUS INJURY** or **DEATH**.

4b. Remove nut from the top of the shaft - **HINT:** Reference stock top hat stud positions in relation to lower shock eyelet, FOX coil-over will need to be oriented the same. When loosening the shaft nut, you will need to hold the end of the shaft from rotating with a wrench.

**DO NOT CLAMP DIRECTLY TO THE POLISHED CHROME SHAFT SURFACE.** Support the shock from bottom to prevent it from falling to the ground when the nut is removed.

4c. Separate the shock from the spring - You will reuse the stock spring along with the hardware pictured in (Fig 6). Inspect stock spring hardware bushings and replace if necessary.

5. There are three ride height settings to choose from. The lowest groove maintains stock ride height  $\pm 0.25"$ , the middle groove provides a  $1" \pm 0.25"$  lift, the top groove provides a  $2" \pm 0.25"$  lift. Make sure the snap ring is positioned in the desired groove before coil spring installation.

Note: As the snap ring is raised from lowest groove, droop travel will decrease and the shock may “top out” more frequently. (Fig 7)



Fig. 7

## SHOCK INSTALLATION

1. Install Performance Series coil-over into OEM spring and secure with stock spring hardware. Note: You must use the FOX supplied nut on the top of the shaft - Torque this nut to 20 ft-lbs. (Fig 8)



Fig. 8

2. Install new coil-over assembly onto vehicle by following the reversal of disassembly steps: (Steps 4, 3, 2). Add high strength threadlocker and torque all fasteners to OEM recommended values. (Fig 9)

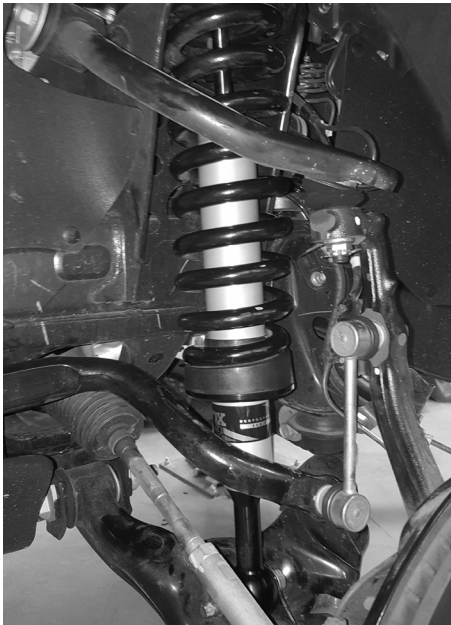


Fig. 9: Left side shown

3. For KDSS models, reinstall wheels and torque to OEM specifications. Lower the vehicle to the ground. Reattach sway bar, first securing passenger side with (2) bolts onto the lower control arm. Using a jack, compress the hydraulic ram on the driver side and reattach using the remaining (2) bolts. Torque all (4) bolts securing sway bar to OEM specifications.
4. Perform a visual suspension check to verify that all components are installed correctly, and all fasteners have been tightened and torqued. Check that suspension has proper steering clearance by turning the front wheels lock to lock.
5. A professional wheel alignment is highly recommended after installation.



## **FOX LIMITED WARRANTY**

FOX Factory, Inc., a California corporation having offices at 915 Disc Drive, Scotts Valley, CA 95066 ("FOX"), makes the following LIMITED WARRANTY with respect to its suspension products:

### **LIMITED ONE (1) YEAR WARRANTY ON SUSPENSION PRODUCTS**

Subject to the limitations, terms and conditions hereof, FOX warrants, to the original retail owner of each new FOX suspension product, that the FOX suspension product, when new, is free from defects in materials and workmanship. Unless otherwise required by law, this warranty expires one (1) year from the date of the original FOX suspension product retail purchase from an authorized FOX dealer or from a FOX authorized Original Equipment Manufacturer where FOX suspension is included as original equipment on a purchased vehicle. If law requires a warranty duration of greater than one (1) year, then, subject to the other provisions hereof, this warranty will expire at the end of the minimum warranty period required by such law.

## **TERMS OF WARRANTY**

This warranty is conditioned on the FOX suspension product being operated under normal conditions and properly maintained as specified by FOX. This warranty is only applicable to FOX suspensions purchased new from an authorized FOX source and is made only to the original retail owner of the new FOX suspension product and is not transferable to subsequent owners. This warranty is void if the FOX suspension product is subjected to abuse, neglect, improper or unauthorized repair, improper or unauthorized service or maintenance, alteration, modification, accident or other abnormal, excessive, or improper use.

Should it be determined by FOX in its sole and final discretion, that a FOX suspension product is covered by this warranty, it will be repaired or replaced, by a comparable model, at FOX's sole option, which will be conclusive and binding.



THIS IS THE EXCLUSIVE REMEDY UNDER THIS WARRANTY. ANY AND ALL OTHER REMEDIES AND DAMAGES THAT MAY OTHERWISE BE APPLICABLE ARE EXCLUDED, INCLUDING, BUT NOT LIMITED TO, INCIDENTAL OR CONSEQUENTIAL DAMAGES OR PUNATIVE DAMAGES.

This limited warranty does not apply to normal wear and tear, malfunctions or failures that result from abuse, improper assembly, neglect, alteration, improper maintenance, crash, misuse or collision. This limited warranty gives the consumer specific legal rights. The consumer may also have other legal rights which vary from state to state or country to country. Some states and countries do not allow the exclusion or limitation of incidental or consequential damages or warranties, and if dictated by law the above limitations or exclusions may not apply to you. If it is determined by a court of competent jurisdiction that a certain provision of this limited warranty does not apply, such determination shall not affect any other provision of this limited warranty and all other provisions shall remain in full effect.

THIS IS THE ONLY WARRANTY MADE BY FOX ON ITS SUSPENSION PRODUCTS AND COMPONENTS, AND THERE ARE NO WARRANTIES WHICH EXTEND BEYOND THE DESCRIPTION HEREIN. ANY WARRANTIES THAT MAY OTHERWISE BE IMPLIED BY LAW INCLUDING, BUT NOT LIMITED TO, ANY IMPLIED WARRANTY OF MERCHANTABILITY OR FITNESS FOR A PARTICULAR PURPOSE ARE EXCLUDED.

# SHOCKS NEED LOVE TOO

## FOX SERVICE & UPGRADES

Have your FOX shocks serviced or upgraded by FOX technicians. Call our Off-Road and Truck Service Center at 619.768.1800 to go over the service and upgrade options available for your shocks. Once you've setup your service or upgrades you will receive a return authorization number and shipping instructions

## COMPLETE SERVICE INTERVALS

- 100% street use: every 50,000 miles
- 50% street / 50% off-road use: every 10,000 miles

## SERVICE MENUS & PRICING

Visit [ridefox.com/orservice](https://ridefox.com/orservice)



RIDEFOX.COM 750 VERNON WAY SUITE 101, EL CAJON, CA 92020 USA  
1.800.FOX.SHOX (369.7469) 619.768.1800 ORSERVICE@RIDEFOX.COM  
PN 605-01-243 REV C OCTOBER 2019