



Installation Instructions

Dodge Ram(Gen 2) Front Winch Bumper

Product Number: A1551, A1550
Application: '94-2002 Dodge Ram (Gen2) Heavy Duty 2500/3500

SAFETY

Your safety and the safety of others is very important.

- In order to help you make informed decisions about safety, we have provided installation instructions and other information.
- These instructions alert you to potential hazards that could hurt you or others.
- Please do a job safety analysis (JSA) before each task to identify potential hazards for your situation and remove/protect against them.
- You must use your own good judgment, and take your time.

Read and understand all safety precautions and instructions before installing this product.

THIS PRODUCT IS FOR OFFROAD USE ONLY. ALL LIABILITY FOR INSTALLATION AND USE RESTS WITH THE OWNER.

CARELESS INSTALLATION AND OPERATION CAN RESULT IN SERIOUS INJURY OR EQUIPMENT DAMAGE.

Injury hazard

Failure to observe these instructions could lead to severe injury or death.

- ☐ **Always** remove jewelry and wear eye protection.
- ☐ **Always** use extreme caution when jacking up a vehicle for work. Set emergency brake and use tire blocks. Locate and use the vehicle manufacturers designated lifting points. Use jack stands.
- ☐ **Always** use appropriate and adequate care in lifting components into place.
- ☐ **Always** insure components will remain secure during installation and operation.
- ☐ **Always** wear safety glasses when installing this kit. A drilling operation will cause flying metal chips. Flying chips can cause serious eye injury.
- ☐ **Always** use extreme caution when drilling on a vehicle. Thoroughly inspect the area to be drilled (on both sides of material) prior to drilling, and relocate any objects that may be damaged.
- ☐ **Always** use extreme caution when cutting and trimming during fitting.
- ☐ **Always** tighten all nuts and bolts securely per installation instructions.
- ☐ **Always** route electrical cables carefully. Avoid moving parts, components that become hot and rough or sharp edges.
- ☐ **Always** insulate and protect all exposed wiring and electrical terminals.
- ☐ **Always** perform regular inspections and maintenance on mounts and related hardware.





Installation Instructions

Dodge Ram(Gen 2) Front Winch Bumper

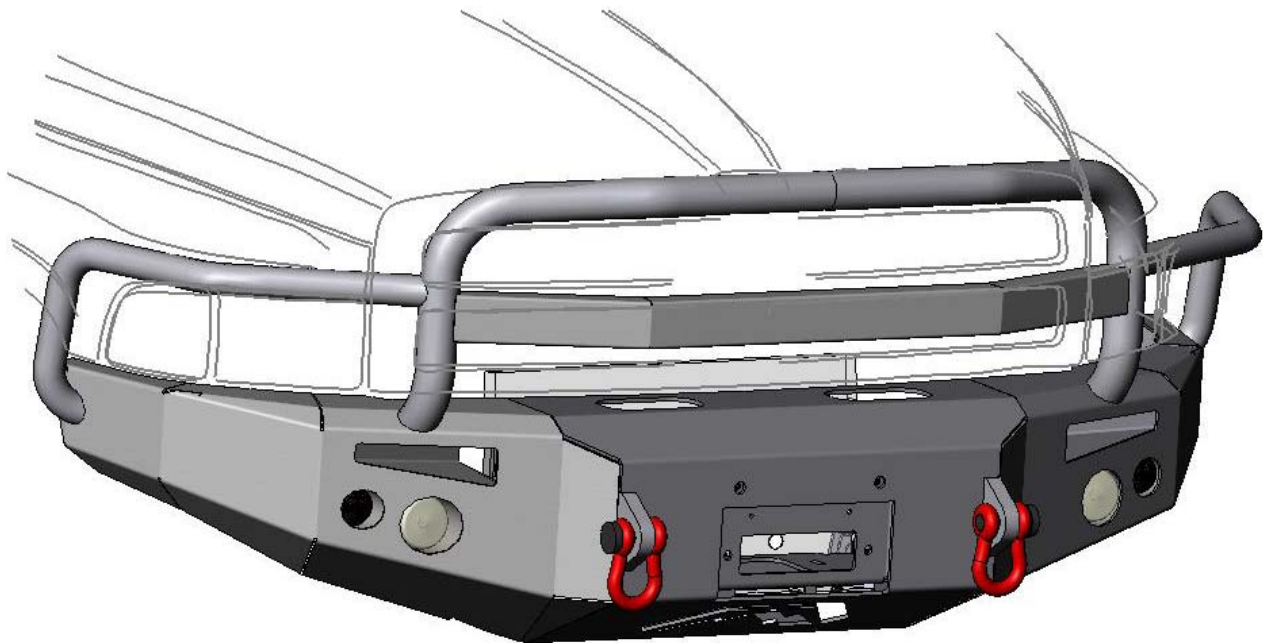
Product Number: A1551, A1550
Application: '94-2002 Dodge Ram (Gen2) Heavy Duty 2500/3500

I. Overview

Congratulations on your new purchase of the industries' best and most stylish Front Winch Bumper available for the Gen 2 Dodge Ram 2500/3500's! This Bumper has been **engineered** for strength while keeping the weight down.

Your Front Bumper designed in 3-D from digitized data, CNC laser cut, fabricated, and powder coated... all in the U.S.A.

Enjoy the fit and finish of a quality Gen 2 Dodge Ram Front Winch Bumper from Fab Fours Inc.





Installation Instructions

Dodge Ram(Gen 2) Front Winch Bumper

Product Number: A1551, A1550
Application: '94-2002 Dodge Ram (Gen2) Heavy Duty 2500/3500

II. Tools Required

- Socket Wrench with Extension
- Breaker Bar
- 3/4" & 18mm Sockets
- 5/32" & 1/8" Allen Keys
- Flat and Phillips Head Screw Drivers
- 3/4", 7/16", & 3/8" Open End Wrench
- Floor Jack and wood block.

III. Removal of Stock Bumper

A. Disconnect the factory fog light harness and tie up out of harm's way.

B. If you factory bumper has the horn or other items fastened to the Factory Bumper Corner Stiffeners, please remove these and relocate them to the frame.

C. Loosen the fastener on the bumper side of the corner supports and fully remove the fastener on the frame side of the corner support allowing it to rotate down and out of the way.

D. Loosen the 3 bolts (Per side) holding the bumper bracket to the frame rail, using an 18mm socket. See Image Below. Do Not Fully Remove Until Bumper is Supported!





Installation Instructions

Dodge Ram(Gen 2) Front Winch Bumper

Product Number: A1551, A1550
Application: '94-2002 Dodge Ram (Gen2) Heavy Duty 2500/3500



E. With Bumper Supported remove the fasteners and remove by pulling down and out away from the truck.

F. Your Truck is now ready for the install of your new Fab Fours Front Bumper!

IV. Lights and Wiring Installation

A. Remove headlights following owners manual. On each side, tap into the three turn indicator wires using supplied tap connectors (reference the wiring diagram).

B. Connect supplied turn indicator wiring harnesses to tap connectors following wiring diagram; repeat for other side.

C. Replace headlights and grill in reverse order of removal.

D. Tap into OEM fog light harness following wiring diagram using two supplied tap connectors.

E. Connect supplied fog lamp wiring harness to tap connectors following wiring diagram.

F. Run passenger side fog lamp supply wires across bottom of bumper and tap into Fab Fours driver side fog lamp wires(If Factory Harness is not closely available on the Passenger Side.)

G. Install turn indicators into outside bumper light pockets



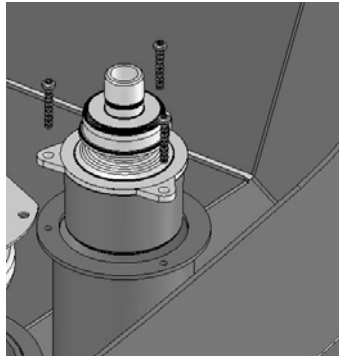


Installation Instructions

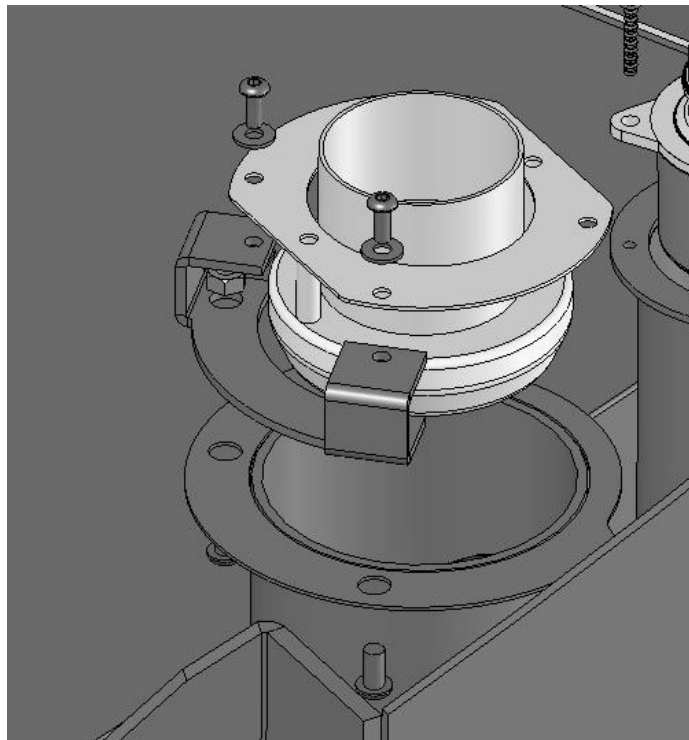
Dodge Ram(Gen 2) Front Winch Bumper

Product Number: A1551, A1550
Application: '94-2002 Dodge Ram (Gen2) Heavy Duty 2500/3500

using three self- tapping screws per side. Note: verify that "TOP" letting on turn indicator is facing top of bumper.



H. Install fog lamp brackets onto inner light pockets using two bolts and nuts per side and attach running light to bracket as shown using two bolts, washers, and nuts per side. Verify that light adjustment screw is facing downward before tightening fully. Connect Harness once bumper is installed.





Installation Instructions

Dodge Ram(Gen 2) Front Winch Bumper

Product Number: A1551, A1550
Application: '94-2002 Dodge Ram (Gen2) Heavy Duty 2500/3500

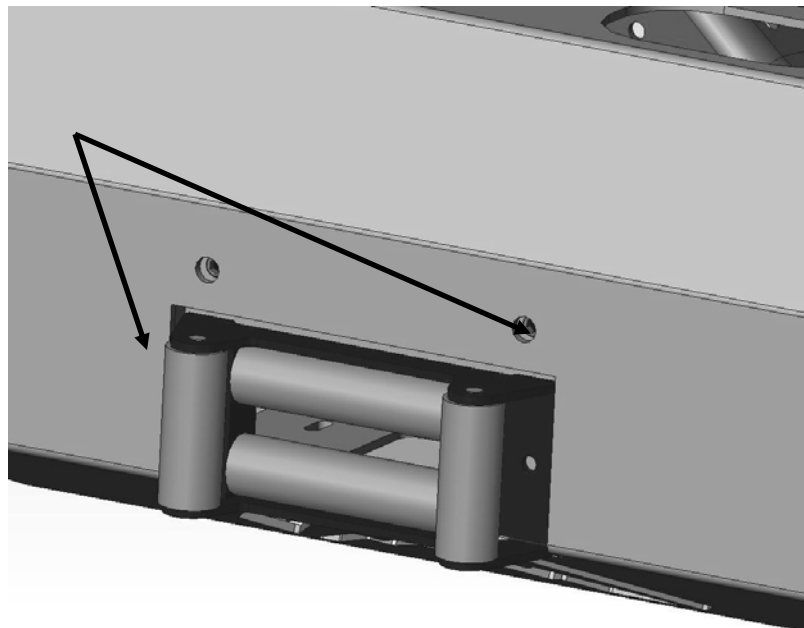
V. Front Winch Bumper Installation

NOTE: The Following Installation steps apply to the installation of the Front Winch Bumper. **PLEASE READ THE ENTIRE MANUAL BEFORE ATTEMPTING INSTALLATION!** Ignoring these steps will increase your probability of scratching the vehicle during product Installation!

A. Remove the Bumper from the shipping carton. Lay all items out on a blanket to prevent damage to the powder coating.

B. OPTIONAL: If installing winch and roller fairlead (neither provided) into bumper, do it at this time. Bottom bolts (not provided) go through fairlead, then into winch. Thread 7/16" cap screws through hole in front bumper and into winch body.

C. NOTE: Winch should be bolted to **FRONT FACE** of the bumper in four places, and can be bolted to winch tray if so desired with two additional fasteners.



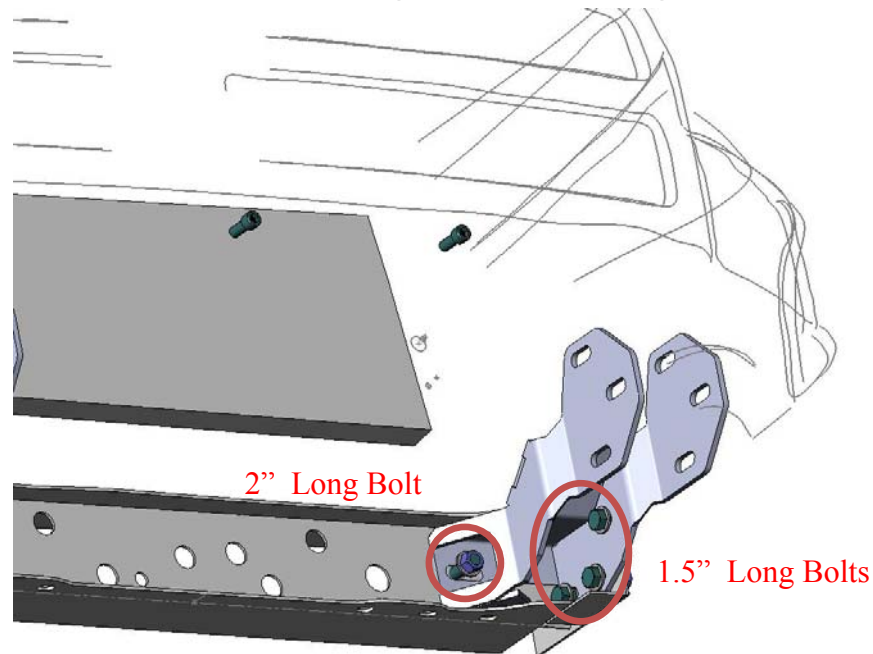


Installation Instructions

Dodge Ram(Gen 2) Front Winch Bumper

Product Number: A1551, A1550
Application: '94-2002 Dodge Ram (Gen2) Heavy Duty 2500/3500

D. Using supplied ½" hardware install mounts using the using the three 1.5" long bolts through the side of the frame rail(Per Side). Use the 2" Long bolt for the hole that passes through the mount and the trucks front cross member. The use of supplied .25" thick black shims might be needed to fill the gap between the mount and the cross-member. Do Not Fully Tighten. See Image Below.



E. With the help of some friends, and/or the use of a floor jack and a wood block, lift the bumper into place sliding the internal mount towers on the bumper into the sides of the frame mounts. Insert the 5.5" long ½" hardware through both the mounts and bumper. Do Not Fully Tighten. See Image Below.

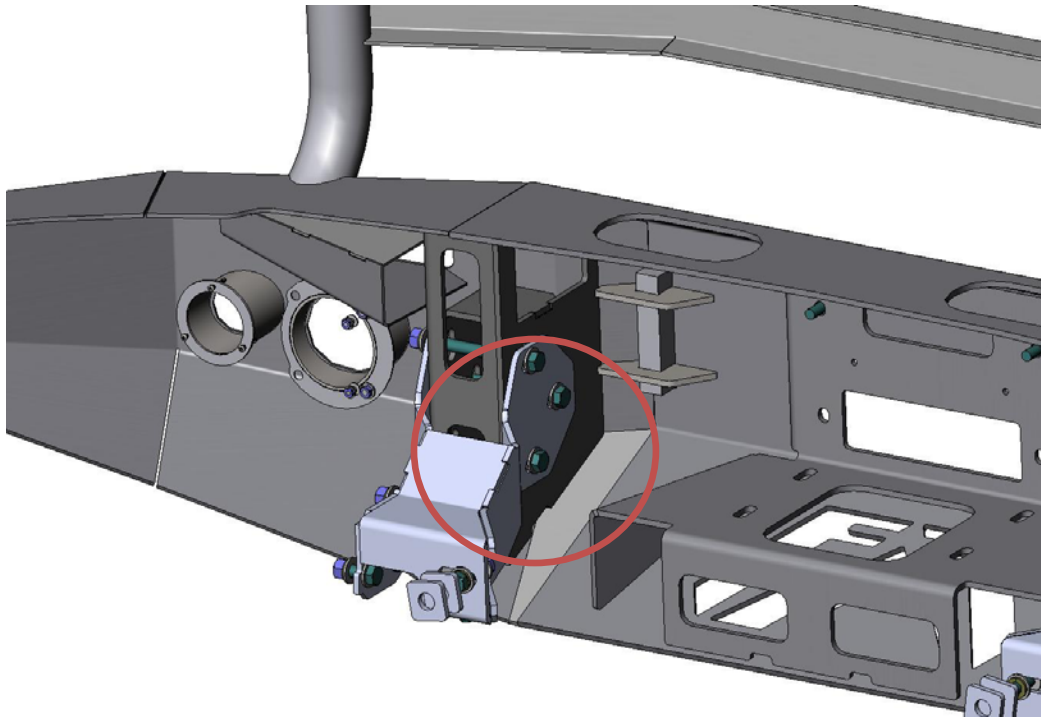




Installation Instructions

Dodge Ram(Gen 2) Front Winch Bumper

Product Number: A1551, A1550
Application: '94-2002 Dodge Ram (Gen2) Heavy Duty 2500/3500



F. Adjust the bumper to achieve good visual alignment as follows:

1. Adjust in/out, up/down, and “castor” with the intermediate mount bolts. Allow 0.5” Gap from all painted surfaces for Frame Flex.

G. Tighten all fasteners; beginning with frame mounts. Then tighten all mount-to-bumper fasteners.

H. Trim inner-fender liners to match bumper if desired.

I. Connect wiring harnesses to lights as shown in wiring diagram.

J. Verify proper operation of lights. Note: Turn indicators should be dim during “running” condition and flash bright for turn.





Installation Instructions

Dodge Ram(Gen 2) Front Winch Bumper

Product Number: A1551, A1550
Application: '94-2002 Dodge Ram (Gen2) Heavy Duty 2500/3500

VI. Wiring Diagram

Note: Due to the large range of years this product applies it is required to use a test light to verify the correct wires to be used to tap into for the supplied turn indicators.

Driver Side Turn Indicator at Headlight

OEM (Running) →White Fab Fours
OEM (Turn) →Red Fab Fours
OEM (Ground) →Green Fab Fours

Passenger Side Turn Indicator at Headlight

OEM (Running) →White Fab Fours
OEM (Turn) →Red Fab Fours
OEM (Ground) →Green Fab Fours

Fog Lamp

OEM (Power) White w/Yellow →Black Fab Fours
OEM (Ground) Black →Red Fab Fours

A. Tap into Factory Harness on each side of the truck to supply the Fog Lights. Cut wiring short if possible.

B. Route the supplied turn indicator harness under and behind the headlight.

C. Remove the OEM turn indicator from the OEM headlight assembly to allow for easier access to the wiring.



D. Tap into the OEM turn indicator harness following the color codes above.





Installation Instructions

Dodge Ram (Gen 2) Front Winch Bumper

Product Number: A1551, A1550
Application: '94-2002 Dodge Ram (Gen2) Heavy Duty 2500/3500

VII. Maintenance/Care

- ☐ Periodically check and tighten all fasteners.
- ☐ Stripped, fractured, or bent bolts or nuts need to be replaced.
- ☐ After washing of the vehicle make sure to fully dry all surfaces

VIII. Contact Information

Fab Fours Inc.
10424 Rodney St.
Charlotte, NC 28134

Phone (866)-385-1905
Fax (866)-574-1424
Email Support@fabfours.com



More than expected... Better than expected

