

READYLIFT[®]

SUSPENSIONS

66-19180 Dodge 2500/3500 HD 1.75" Leveling Kit

IF your ReadyLIFT product has a damaged or missing part, please contact customer service directly and a new replacement part will be sent to you immediately. For warranty issues, please return to the place of installation and contact ReadyLIFT.

(877) 759-9991

MON-FRI 7AM-4PM PST

OR

EMAIL: support@readylift-ami.COM

WEBSITE: ReadyLIFT.COM

****Please retain this document in your vehicle at all times.****

Limited Lifetime Warranty

This unique product warranty proves our commitment to the quality and reliability of every product that ReadyLIFT manufactures. The ReadyLIFT product warranty only extends to the original purchaser of any ReadyLIFT product, if it breaks, we will give you a new part. Warranty does not apply to discontinued parts.

Our Limited Lifetime Warranty excludes the following ReadyLIFT items; bushings, bump stops, ball joints, tie rod ends, heim joints, steering stabilizers, and shock absorbers. These parts are subject to wear and are not considered defective when worn. They are warranted for 12 months from the date of purchase for defects in workmanship.

This product warranty is voided if the vehicle is not aligned after kit installation and proper maintenance is routinely done.

Product purchased directly from ReadyLIFT has a 90 day return policy on uninstalled products from the date of purchase (may be subject to restocking fee). Uninstalled product returns must be in the original ReadyLIFT packaging. Please call **(877) 759-9991** to get an RGA# for any return. Customer is responsible for shipping costs back to ReadyLIFT. **Returns without RGA# will be refused.** Contact ReadyLIFT directly about any potentially defective parts prior to removal from vehicle.

ReadyLIFT products are **NOT** intended for off-road abuse. Any damage or failure as a result from off-road abuse voids the warranty of the ReadyLIFT product. ReadyLIFT is **NOT** responsible for any subsequent damages to any related vehicle parts due to misuse, abuse, improper installation, or lack of maintenance. Furthermore, ReadyLIFT reserves the right to change, modify or cancel this warranty without prior notice.



**READ INSTRUCTIONS THOROUGHLY AND COMPLETELY BEFORE BEGINNING INSTALLATION.
INSTALLATION BY A CERTIFIED PROFESSIONAL MECHANIC IS HIGHLY RECOMMENDED.**

READYLIFT IS NOT RESPONSIBLE FOR ANY DAMAGE OR FAILURE RESULTING FROM IMPROPER INSTALLATION.

Safety Warning

MISUSE OF THIS PRODUCT COULD LEAD TO INJURY OR DEATH.

Suspension systems or components that enhance the on and off-road performance of your vehicle may cause it to handle differently than it did from the factory. Extreme care must be used to prevent loss of control or vehicle rollover during abrupt maneuvers.

Always operate your vehicle at reduced speeds to ensure your ability to control your vehicle under all driving conditions. Failure to drive safely may result in serious injury or death to driver and passengers.

Driver and passengers must ALWAYS wear your seat belts, avoid quick sharp turns and other sudden maneuvers. ReadyLIFT Suspension does not recommend the combined use of suspension lifts, body lifts, or other lifting devices.

You should never operate your vehicle under the influence of alcohol or drugs.

Constant maintenance is required to keep your vehicle safe. Thoroughly inspect your vehicle before and after every off-road use.

It is the responsibility of the retailer and/or the installer to review all state and local laws, with the end user of this product, related to bumper height laws and the lifting of their vehicle before the purchase and installation of any ReadyLIFT products.

It is the responsibility of the driver/s to check their surrounding area for obstructions, people, and animals before moving the vehicle.

All raised vehicles have increased blind spots; damage, injury and/or death can occur if these instructions are not followed.

Installation Warning

All steps and procedures described in these instructions were performed while the vehicle was properly supported on a two post vehicle lift with safety jacks.

Use caution during all disassembly and assembly steps to insure suspension components are not over extended causing damage to any vehicle components and parts included in this kit.

Included instructions are guidelines only for recommended procedures and are not meant to be definitive. Installer is responsible to insure a safe and controllable vehicle after performing modifications.

ReadyLIFT Suspension recommends the use of an OE Service Manual for model/year of vehicle when disassembly and assembly of factory and related components.

Unless otherwise specified, tighten all bolts and fasteners to standard torque specifications listed within the OE Service Manual.

Suspension components that use rubber or urethane bushings should be tightened with the vehicle at normal ride height. This will prevent premature wear or failure of the bushing and maintain ride comfort.

Larger tire and wheel combinations may increase leverage on suspension, steering, and related components.

Due to payload options and initial ride height variances, the amount of lift is a base figure. Final ride height dimensions may vary in accordance to original vehicle ride height. Always measure the vehicle ride height prior to beginning installation.

IMPORTANT NOTE:

A lifted vehicle may have different headlight aim performance. ReadyLIFT recommends marking and recording the headlight beam position before kit installation and then adjusting, if necessary, the headlamps to the same height settings after kit installation. Set the vehicle on a level surface 10' to 15' from a solid wall or garage door. (This is a general distance with some manufacturers requiring different distances.) Note the top height of the low beam's bright spot, the top of the most intense part of the beam, for driver and passenger side. Height may vary from side to side. Repeat this procedure and adjust after lift kit is installed. Adjust if the aim is off by turning the adjusters gradually (a quarter of a turn) and looking to see where the new alignment falls. It may be easier to block one headlamp while adjusting the other. Consult the owner operation manual for procedures to adjust headlights - many automakers offer headlight aiming specs. Some states have their own specifications when it comes to headlight aim, so it's best to follow those rules when aligning headlights.

This suspension system was developed using a **315-70/18 tire with 18" x 8" wheel and an offset of +20mm**. If wider tires are used, offset wheels may be necessary and trimming may be required. Factory wheels can be used but are not recommended with tires over **12.5" wide**. The stock spare rim can be run in an emergency. Please note that if running the spare factory tire, it is done for short distances and a speed not to exceed 45mph or damage to differentials may occur.

RECORD HEAD LAMP MEASUREMENTS

Driver Before	Driver After	Passenger Before	Passenger After

VEHICLE HEIGHT MEASUREMENTS

	Driver Before	Driver After	Passenger Before	Passenger After
Front				
Rear				

BILL OF MATERIALS

DESCRIPTION	QTY
FRONT SPRING SPACER	2
FRONT SHOCK EXTENSION	2
M12-1.75 x 30mm Class 10.9 Yellow Zinc Screw	2
M12-1.75 Class 10 Clear Zinc Lock Nut	2
M12 x 24mm OD Narrow Flat Washer (13mm ID)	4
M14-2.0 x 75mm Class 10.9 Yellow Zinc Screw	2
M14-2.0 Class 10 Clear Zinc Lock Nut	2
M14 x 28mm OD Narrow Flat Washer (15mm ID)	4



Before starting installation: ReadyLIFT Suspension highly recommends that the installation of this product be performed by a professional mechanic with experience working on and installing suspension products. Professional knowledge and skill will typically yield the best installation results. If you need an installer in your area, please contact ReadyLIFT Suspension Customer Service to find one of our "Pro-Grade" Dealers.

INSTALLATION BY A PROFESSIONAL IS HIGHLY RECOMMENDED.

- A Factory Service Manual for your specific Year / Make / Model is highly recommended for reference during installation.
- All lifted vehicles may require additional driveline modifications and / or balancing.
- A vehicle alignment is REQUIRED after installation of this product.
- Speedometer / Computer recalibration is required if changing +/- 10% from factory tire diameter.
- A vehicle lift or hoist greatly reduces installation time. Installation time estimates are based on an available vehicle hoist.
- Vehicle must be in excellent operating condition. Repair or replace any and all worn or damaged components prior to installation.

*****Some parts shown in red for picture clarification only.*****

ReadyLIFT recommends all steps and procedures described in these instructions be performed while the vehicle is properly supported on a two post vehicle lift with safety jacks.

Otherwise, park vehicle on a clean flat surface and block the rear wheels for safety. Engage the parking brake.

FRONT INSTRUCTIONS

Raise the front of the vehicle and support with safety jack stands on the factory lift points.

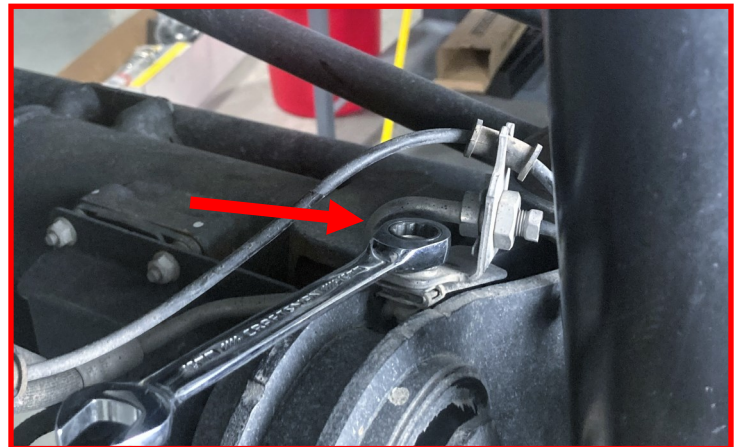
Place a support jack under the front axle.



Remove the front wheels

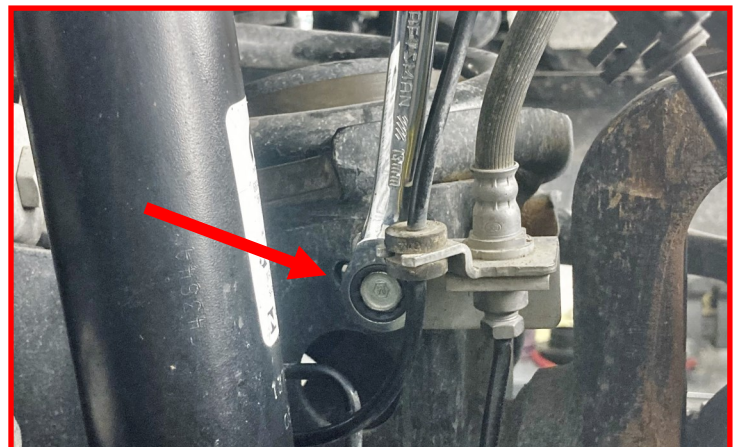
Remove the 13mm ABS and Brake line upper bracket bolt above the radius arm.

Retain factory hardware



Remove the 13mm ABS and Brake line lower bracket bolt from the axle.

Retain factory hardware



Remove the 18mm nut from the sway bar end link while holding the 8mm bolt so it does not spin.

You will only need to remove the upper nut on the end link.

Retain factory hardware



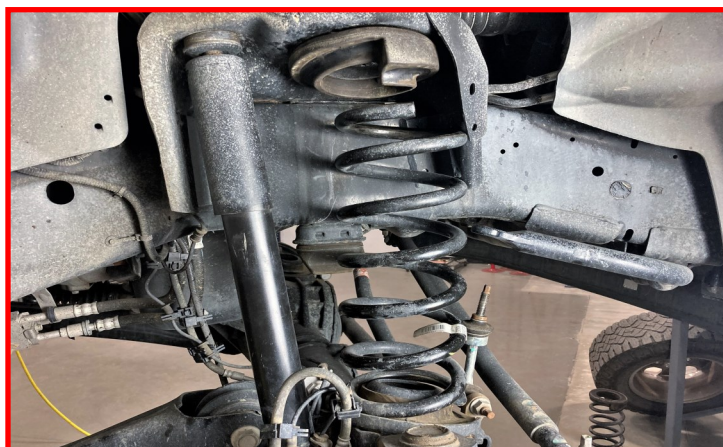
Remove the 21mm lower shock bolt.

Retain factory hardware



The axle should now lower freely.

Lower the axle enough to remove the factory spring.



Remove the spring isolator and install the **spring spacer** with **included hardware** in the spring isolator locating hole.

Torque to 85 ft-lbs



Place the spring isolator into the bottom locating hole on the **spring spacer**.



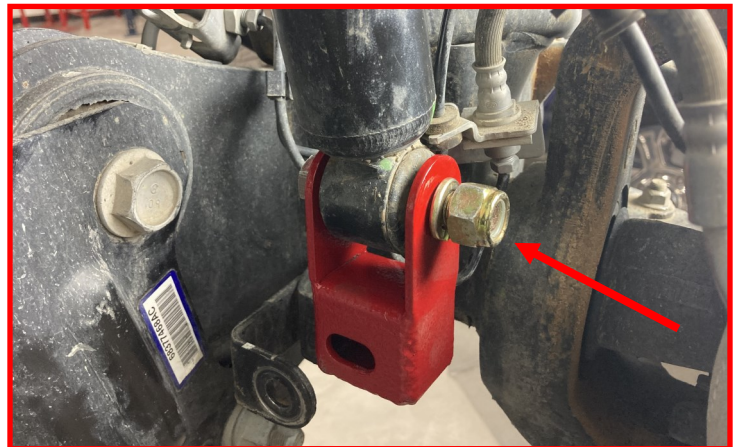
Reinstall the spring into the isolator. Make sure to seat the end of the coil to the backstop on the isolator to maintain the correct spring position. Once the spring is reinstalled raise the jack again to compress the system.



Install the **front shock extension** to the lower mount of the shock. Rotate the shock 90 degrees to allow for install.

Use the **provided M14 hardware** for the upper mount of the shock extension.

Torque to 100 ft-lbs



Install the lower bolt of the **shock extension** using the **factory 21mm bolt**.

Push the lower part of the mount in towards the center of the vehicle and then tighten.

Torque to 100 ft-lbs

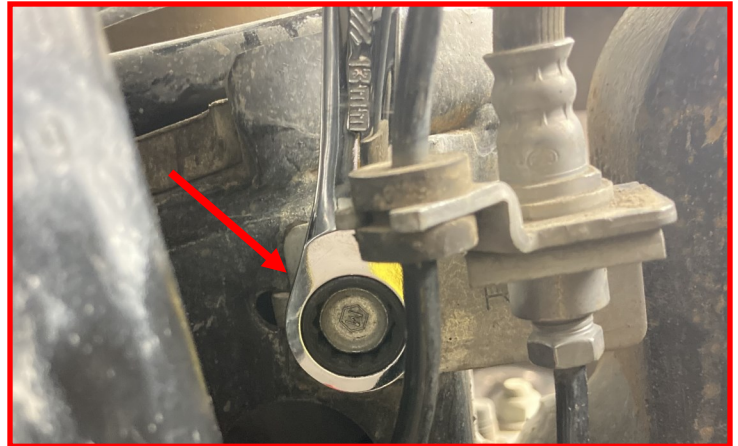


You will now be able to reinstall the **18mm sway bar end link nut**.

Torque to 30 ft-lbs



Reinstall the **13mm lower ABS and Brake line bracket bolt** located on the axle.



Reinstall the **13mm upper ABS and Brake line bracket bolt** located above the radius arm.



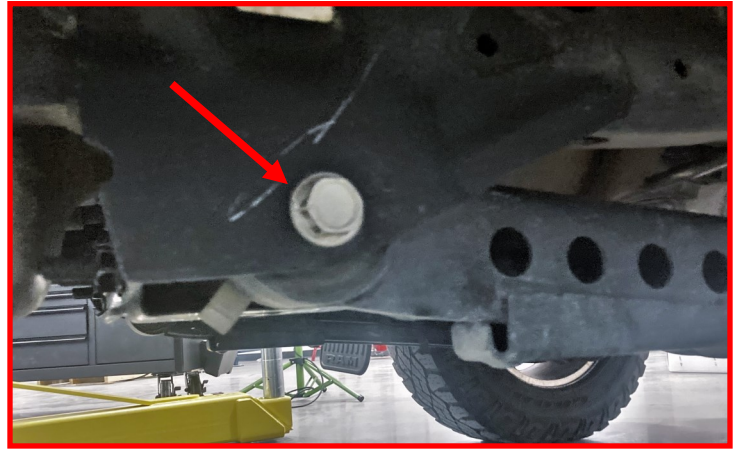
Loosen and then re-tighten the track bar bolts at the frame and axle ends.

Torque to 200 ft-lbs



Loosen and re-tighten the rear radius arm bolt.

Torque to 200 ft-lbs



Repeat this process on the others side of the vehicle.

Reinstall the wheels. Lower the vehicle and torque the wheels to manufactured specifications.

Rotate the wheels lock to lock to verify that there are no clearance or binding issues. Trim and adjust as necessary.



FAILURE TO PERFORM THE POST INSPECTION CHECKS MAY RESULT IN VEHICLE COMPONENT DAMAGE AND/OR PERSONAL INJURY OR DEATH TO THE DRIVER AND/OR OTHERS.

Final Checks & Adjustments

Once the vehicle is lowered to the ground, check all parts which have rubber or urethane components to ensure proper torque. Torque lug nuts to the wheel manufacturer specs. Move vehicle backwards and forwards a short distance to allow suspension components to adjust. Turn the front wheels completely left then right and verify adequate tire, wheel, brake line, and ABS wire clearance. Test and inspect steering, brake and suspension components for tightness and proper operation. Inspect brakes hoses and ABS lines for adequate slack at full extension, adjust as necessary.

RECHECK ALL HARDWARE FOR PROPER TORQUE VALUES AFTER 500 MILES, AND THEN PERIODICALLY AT EACH SERVICE INTERVAL THEREAFTER.

Vehicle Handling Warning

Increasing the height of your vehicle raises the center of gravity and can affect stability and control. Use caution on turns and when making steering corrections.

Vehicles with larger tires and wheels will handle differently than stock vehicles. Take time to familiarize yourself with the handling of your vehicle.

Wheel Alignment/Headlamp Adjustment

It is necessary to have a proper and professional wheel alignment performed by a certified alignment technician. Align the vehicle to recommended specifications. It is recommended that your vehicle alignment be checked after any off-road driving.

In addition to your vehicle alignment, for your safety and others, it is necessary to check and adjust your vehicle headlamps for proper aim and alignment. If the vehicle is equipped with active or passive safety/collision monitoring and/or avoidance systems including, but not limited to, camera- or radar-based systems, check and adjust your vehicle's systems for proper aim and function.