



#C9211 Installation Instructions 1998-2003 S-Series Blazer, 2/4wd, ZR-2 2" Body Lift

Read and understand all instructions and warnings prior to installation of product and operation of vehicle.

Zone Offroad Products recommends this system be installed by a professional technician. In addition to these instructions, professional knowledge of disassembly/ reassembly procedures and post installation checks must be known. Minimum tool requirements include the following: Assorted metric and standard wrenches, hammer, hydraulic floor jack and a set of jack stands. See the "Special Tools Required" section for additional tools needed to complete this installation properly and safely.

» PRODUCT SAFETY WARNING

Certain Zone Suspension Products are intended to improve off-road performance. Modifying your vehicle for off-road use may result in the vehicle handling differently than a factory equipped vehicle. Extreme care must be used to prevent loss of control or vehicle rollover. Failure to drive your modified vehicle safely may result in serious injury or death. Zone Offroad Products does not recommend the combined use of suspension lifts, body lifts, or other lifting devices.

You should never operate your modified vehicle under the influence of alcohol or drugs. Always drive your modified vehicle at reduced speeds to ensure your ability to control your vehicle under all driving conditions. Always wear your seat belt.

» TECHNICAL SUPPORT

Live Chat provides instant communication with Zone tech support. Anyone can access live chat through a link on www.zoneoffroad.com.

www.zoneoffroad.com may have additional information about this product including the latest instructions, videos, photos, etc.

Send an e-mail to tech@zoneoffroad.com detailing your issue for a quick response.

888.998.ZONE Call to speak directly with Zone tech support.

Difficulty Level

easy 1 (2) 3 4 5 difficult

Estimated installation: 4-6 hours

Special Tools Required

Cut-off tool or equivalent

» PRE-INSTALLATION NOTES

1. Special literature required: OE Service Manual for model/year of vehicle. Refer to manual for proper disassembly/reassembly procedures of OE and related components.
2. Adhere to recommendations when replacement fasteners, retainers and keepers are called out in the OE manual.
3. Larger rim and tire combinations may increase leverage on suspension, steering, and related components. When selecting combinations larger than OE, consider the additional stress you could be inducing on the OE and related components.
4. Secure and properly block vehicle prior to installation of Zone Offroad Products. Always wear safety glasses when using power tools.
5. Zone Offroad Products body lifts are designed to be used on vehicles in good operating condition. It is not recommended that body lifts be used on vehicles in poor physical shape. This includes rusted body mounts, damaged or worn frame-to-body mounting brackets, and poor mechanical condition. Perform a visual inspection of the vehicle before beginning installation.

Kit Contents

Qty	Part
12	2" x 3" Body Lift Block
4	2" x 2" Body Lift Block
1	Bolt Pack
1	Ground Strap Relocation Bracket
1	'L' Ground Strap Relocation Bracket
4	Fan Shroud Spacer Tube
1	Rear Bumper Bracket (drv)
1	Rear Bumper Bracket (pass)
1	Lower Fan Shroud Support
1	Fuel Filler Hose 2" x 6"
1	Vent Hose 3/4" x 6"
2	Front Outside Bumper Bracket
1	Front Oil Filter Bracket
1	Rear Oil Filter Bracket
2	Tow Hook Spacer
2	0.500 x 0.058 x 2.970 Sleeve
6	Zip Tie
2	#12 Hose Clamp
2	#36 Hose Clamp
1	Loctite



INSTALLATION INSTRUCTIONS

1. Park the vehicle on a clean, flat surface and block the wheels for safety. Place automatic transmissions in park and manual transmissions in neutral.
2. Remove the negative battery cable first, then the positive battery cable. If equipped, the Supplemental Restraint System will be deactivated when the battery is disconnected.
3. Measure and record the space between the bumpers and the body for reference during installation of the kit.
4. All hardware for this install is located in hardware pack #234.

» FRONT/UNDER HOOD

5. Remove the grill by pulling the ten retaining clips free from the core support. Remove the turn signal lamps from the signal housings. If equipped, remove the two wire harness connectors from the running lights and remove the grill from the vehicle **Figure 1**.



Figure 1

6. Remove the front bumper by removing the four bolts mounting the bumper to the frame horns **Figure 2** and two bolts (one on each side) mounting the bumper to the outside bumper brackets **Figure 3** Remove the bumper from the vehicle.



Figure 2

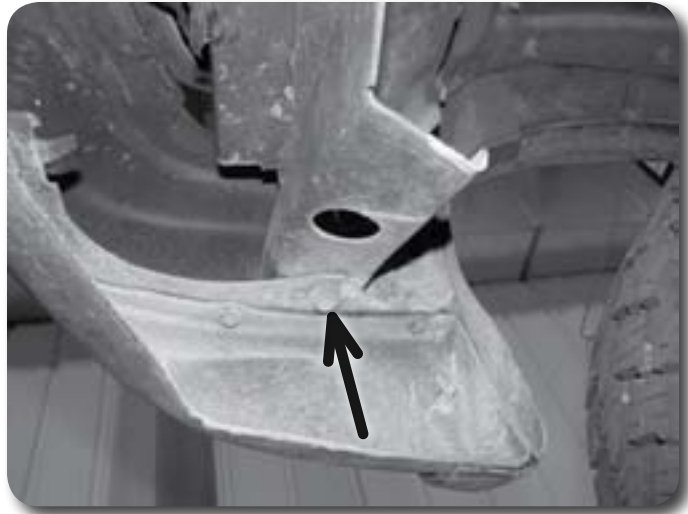


Figure 3

7. Remove the two bolts mounting each of the outside bumper brackets to the frame and remove the brackets from the vehicle Figure 4.



Figure 4

8. If equipped, remove the two bolts mounting each of the tow hooks in the frame rails and remove the tow hooks from the vehicle Figure 5.

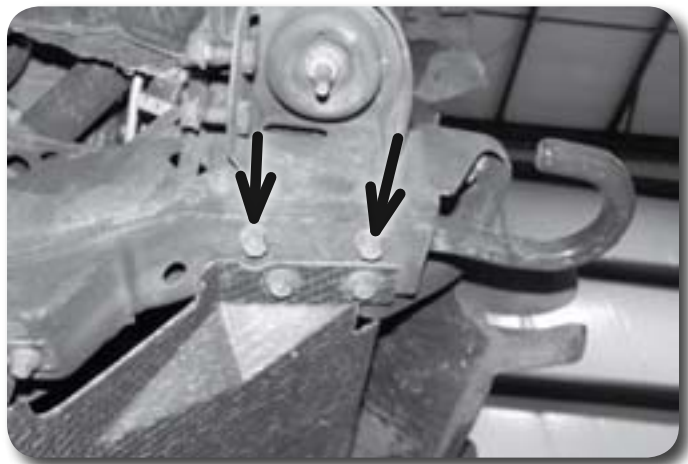


Figure 5

9. Remove the plastic air scoop **Figure 6** from the core support by carefully releasing the four plastic push in fasteners.

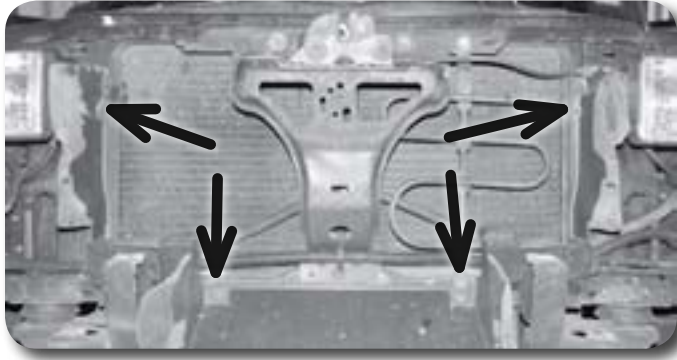


Figure 6

10. Remove the six bolts and the front skid plate from the vehicle **Figure 7**.

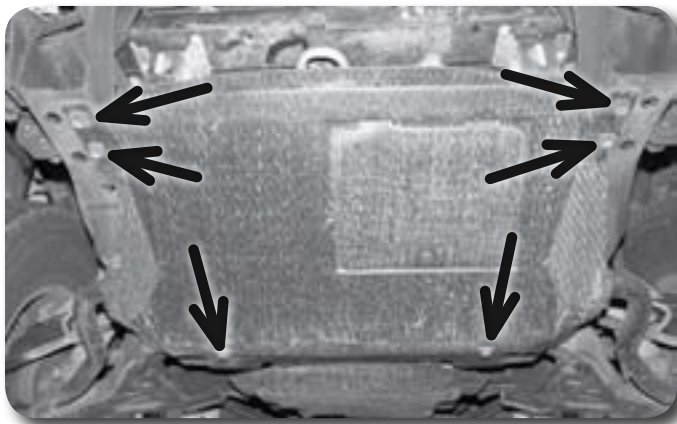


Figure 7

11. Disconnect the oil filter mounting bracket from the core support by removing the two shoulder bolts **Figure 8**.

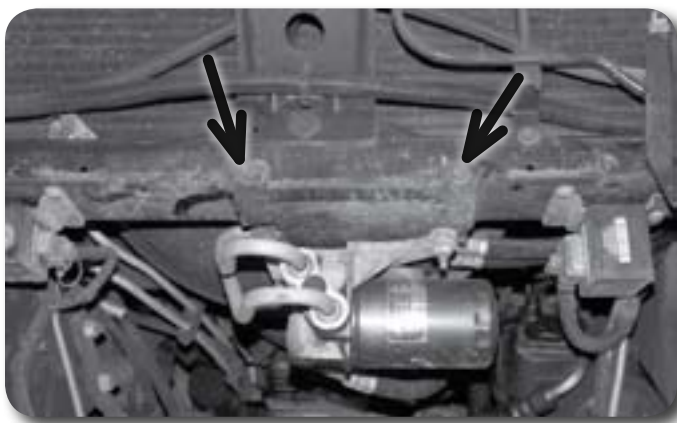


Figure 8

12. If equipped, remove the AC line from the plastic hose clip on the upper fan shroud **Figure 9**.

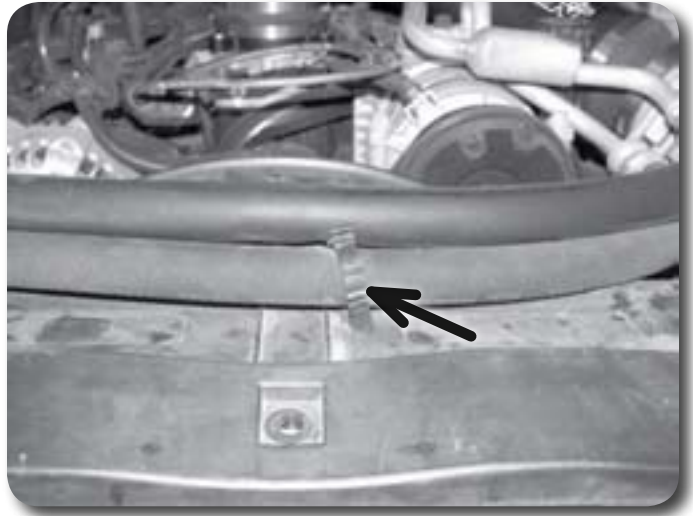


Figure 9

13. Remove the seven bolts mounting the upper fan shroud to the core support and lower fan shroud Figure 10, 11. Remove the upper fan shroud from the vehicle.

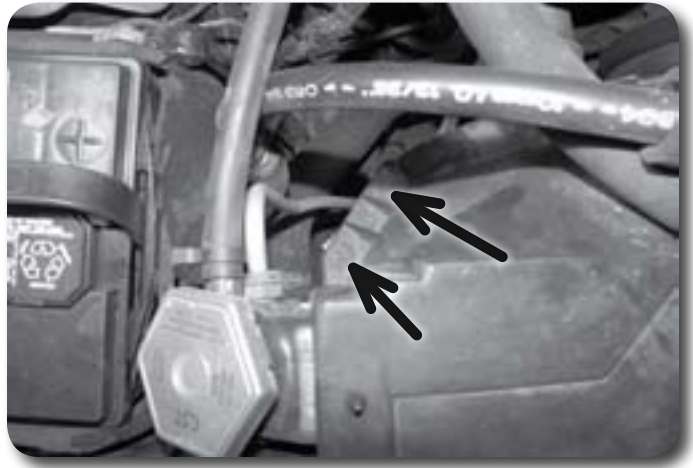


Figure 10



Figure 11

Step 14 Note

A flat head screw driver may be required to release the lower fan shroud retaining clips.

14. Pull the lower fan shroud free from the lower retaining clips and let it rest on the frame rails.

15. Remove the nut retaining the ground strap at the passenger's side firewall and remove the wire from the stud Figure 12.



Figure 12

16. Remove the four screws mounting the air filter housing cover and remove the cover. Remove the intake hose from the throttle body and allow the intake hose assembly to rest on the engine during lifting.
17. 4wd only: Remove the battery retaining clamp and remove the battery from the vehicle Figure 13.



Figure 13

18. 4wd only: Remove the two bolts mounting the battery tray to the core support and remove the battery tray from the vehicle Figure 14.

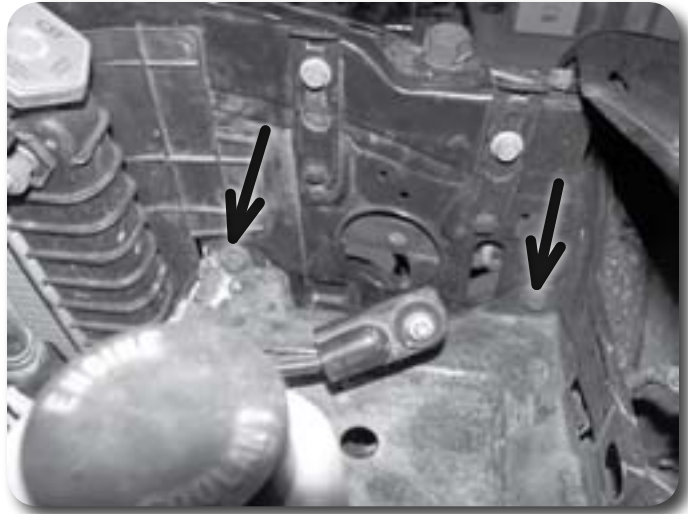


Figure 14

19. 4wd only: Remove the two sheet metal screws and bracket mounting the positive battery cable terminal box to the core support Figure 15.
20. 4wd only: Remove the two bolts mounting the front axle actuator to the passenger's side inner fender. The bolts are accessed from inside the wheel well Figure 15, 16.

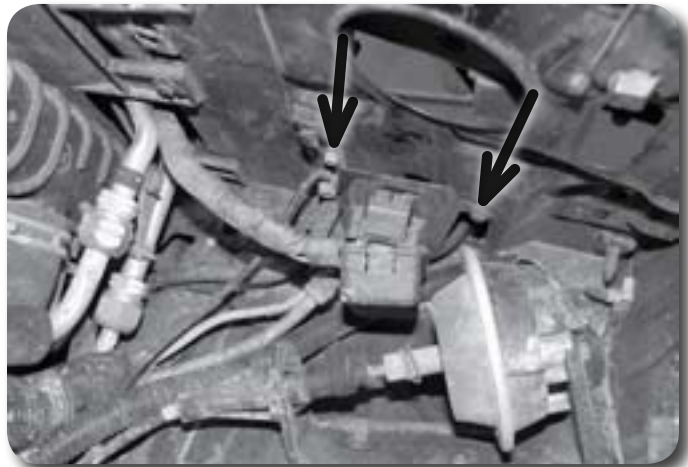


Figure 15



Figure 16

» **UNDER BODY/FRAME RAILS**

21. Remove the bolt mounting the ground strap(s) to the passenger's side frame rail
Figure 17.

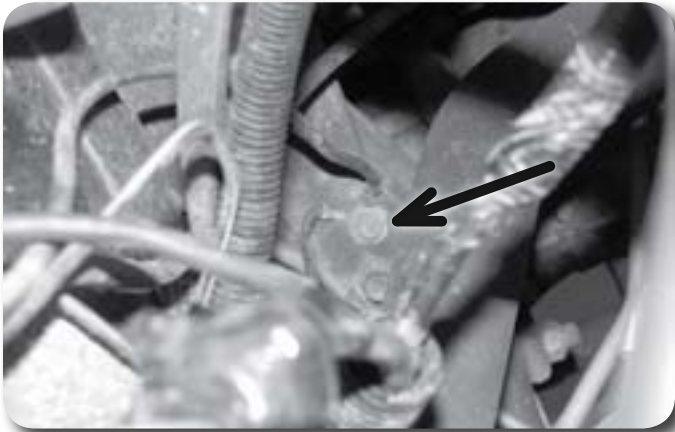


Figure 17

22. Remove the wire harness from the plastic clip on the passenger's side frame rail
Figure 18.

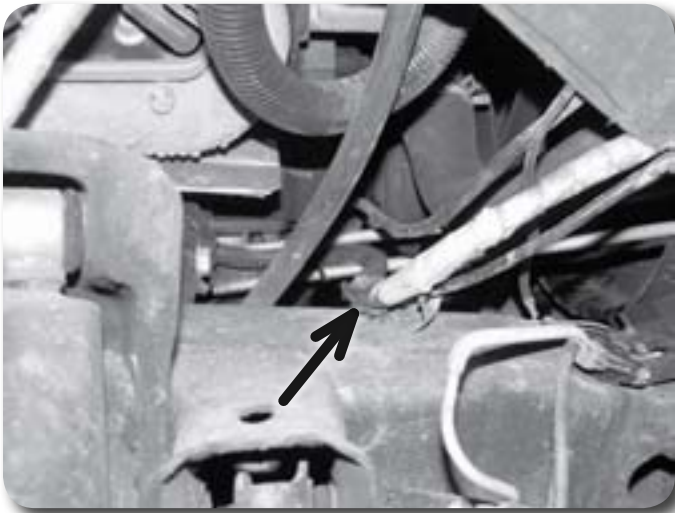


Figure 18

23. Remove the bolt/clip mounting the oil cooler lines to the passenger's side of the engine oil pan Figure 19. Remove the lines from the pan.

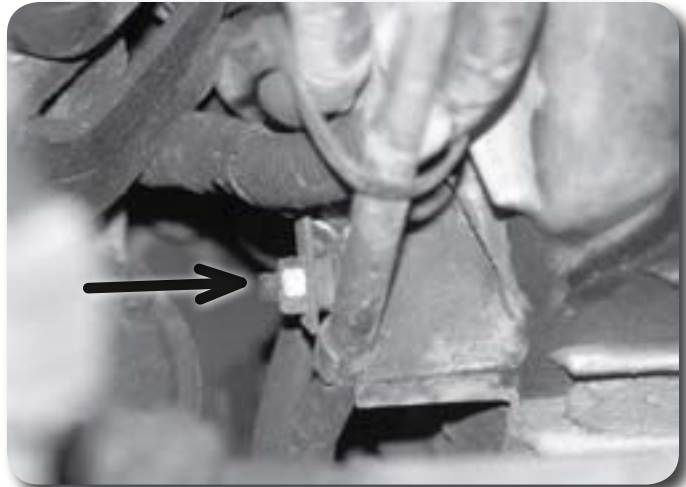


Figure 19

24. Remove the bolt mounting the brake lines to the driver's side shock mount Figure 20.

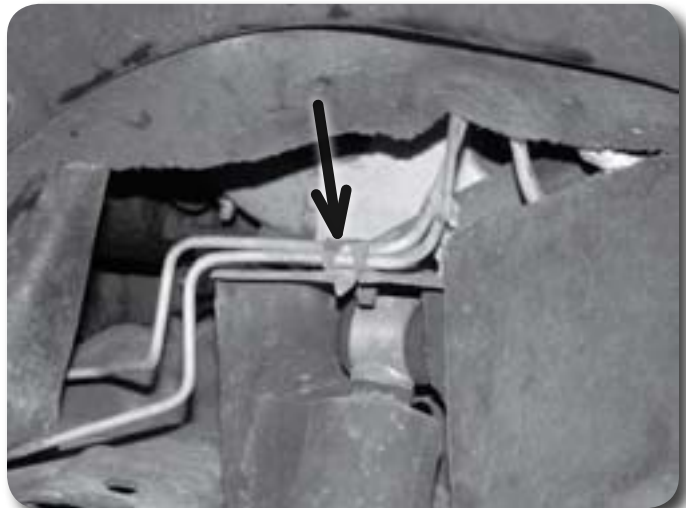


Figure 20

25. Remove the brake line from the plastic retaining clip on the driver's side frame rail Figure 21.

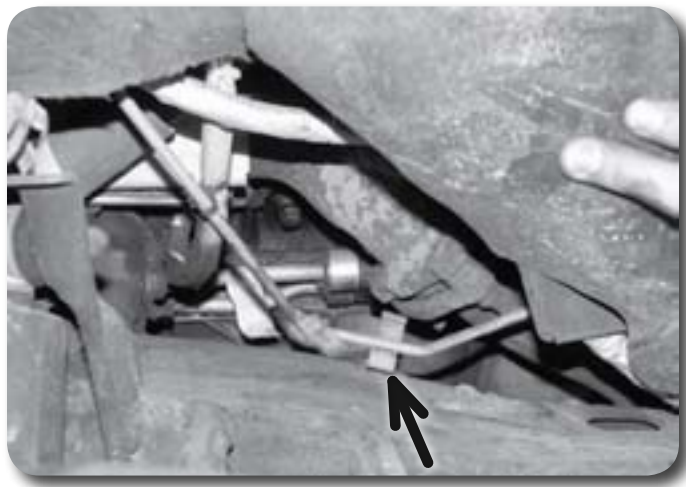


Figure 21

26. Remove the wire harness from the plastic retaining clip on the driver's side frame rail Figure 22.

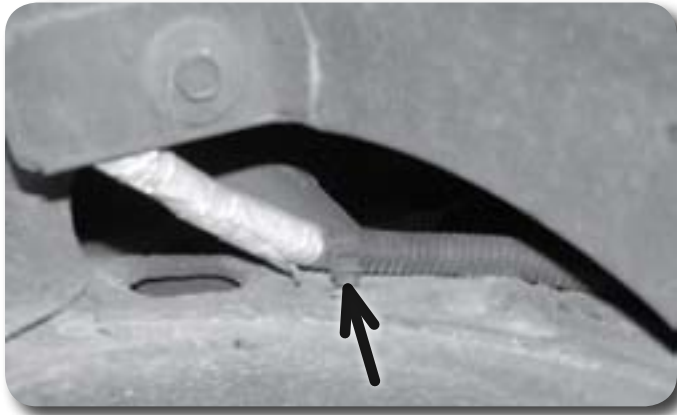


Figure 22

» **REAR/REAR BUMPER**

27. Remove the fuel filler cap to access the three screws mounting the filler neck to the plastic body shroud Figure 23. Remove the three screws to allow the filler neck to fall through the shroud while lifting the bed.

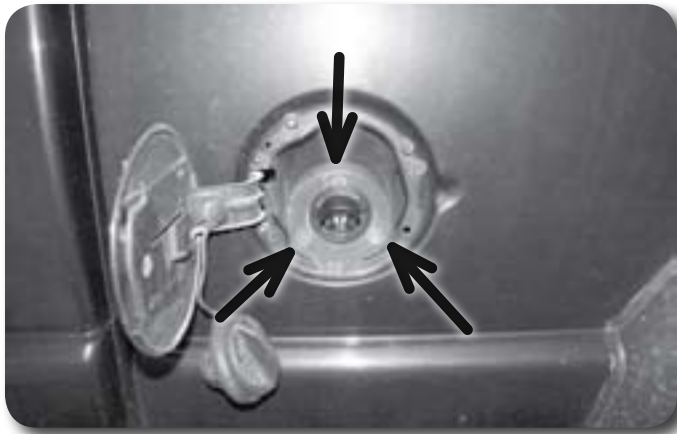


Figure 23

28. Disconnect the main license plate light wire harness connector at the frame Figure 24.



Figure 24

29. Remove the 4 bolts (or 5 with some hitch options) mounting each of the rear bumper brackets to the frame. Remove the bumper from the vehicle.

» **LIFT**

30. Do a thorough visual check of all wires, hoses, etc to ensure that everything has adequate slack for 2" of lift.
31. Loosen but do not remove all of the body mount bolts. There are five body mounts on each side of the vehicle.
32. Remove the passenger's side mounting bolts. Using a hydraulic jack and block of wood, slowly lift the passenger's side of the cab high enough to place the 2" tall x 3" wide spacers on the frame body mounts. While lifting, continue to watch for hoses, wires, etc that may be overextending.
33. Install 12mm x 140mm bolts and 7/16" USS washer in conjunction with the factory washer and bushings in the main cab mounts. Install a 12mm x 140mm bolt with large 1/2" washer in the front core support mount from the top down and fasten with the factory bushing, washer, and nut **Figure 25**. Leave all hardware loose at this time.

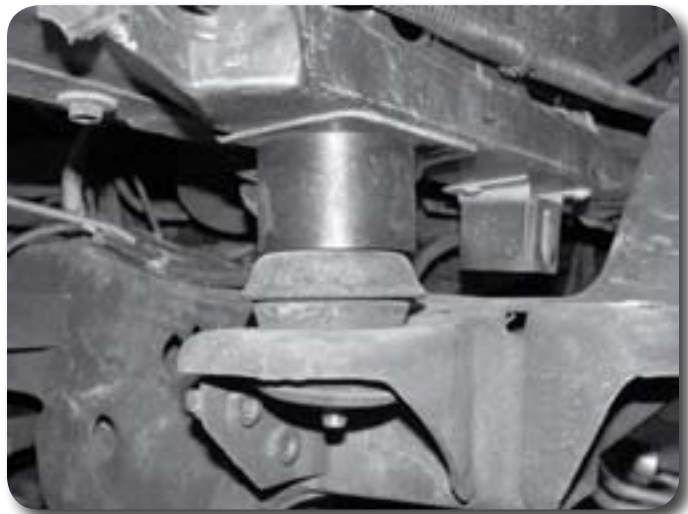


Figure 25

Step 33,34 Note

4-door models have two more body mounts than 2-door models. If installing on 2-door, 2 blocks and bolts will be extra.

34. Repeat lift procedure on driver's side of the vehicle.

35. If necessary, adjust the body so it is square on the frame and tighten all mounting bolts securely. Use Loctite® on all mounting hardware.

» REAR/REAR BUMPER

36. Remove the license plate from the rear bumper.
37. Remove the top plastic cover from the rear bumper by squeezing the plastic clips and pushing them out of the holes **Figure 26**.



Figure 26

38. Remove the eight bolts (4 per side) and the bumper brackets from the rear bumper **Figure 27**.

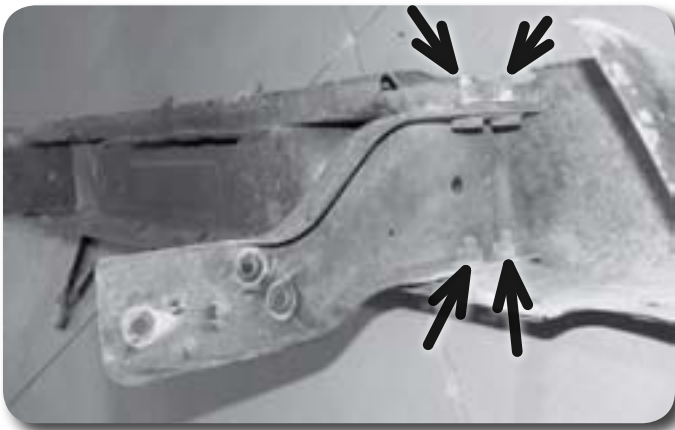


Figure 27

39. Install the new rear bumper brackets with the factory hardware and four 12mm nuts with four 7/16" USS washers to replace the welded nuts on the upper factory bracket mounts. Do not tighten at this time.
40. The bottom corner of the rear frame horns must be trimmed to make clearance for the relocated bumper. Measure from the back edge of the frame 1-5/8" and mark. Measure up from the bottom of the frame 1-1/2" and mark. Cut out the marked off square section of the frame with a saw or cut-off wheel. Paint exposed metal to prevent rust.
41. Install the bumper on the vehicle by aligning the original mounting holes with the corresponding holes in the new brackets. Use a 1/2" x 1-1/4" bolt, nut and 1/2" SAE washers in the rear-most mounting hole. Use the factory hardware in the remaining holes **Figure 28**. Do not tighten at this time.



Figure 28

42. Adjust the bumper-to-body distance using the measurements made at the beginning of the installation and tighten all the bumper mounting hardware securely.
43. Install the plastic bumper cover on the top of the bumper by aligning the clip holes and pushing them into place. Install the license plate lights.
44. Install the license plate with the original hardware.
45. Remove the bolt retaining the fuel filler ground wire to the frame. Loosen the hose clamps retaining the fuel filler and vent hoses to the fuel tank. Remove the filler neck from the vehicle.
46. Outside of the vehicle, the steel filler tube must be cut so it can be extended. Cut the main filler tube and vent tube half way between the body (end) and the first bend. Remove all metal shavings from the tubes.
47. Reconnect the two metal filler tube halves with the provided rubber filler and vent tube extensions and hose clamps. Leave clamps loose.
48. Install the filler neck assembly in the vehicle and attach the filler and vent hose to the fuel tank with the provided hose clamps. Adjust the rubber extensions and tighten the hose clamp securely.
49. Attach the filler neck to the body shroud with the factory screws. Attach the ground wire to the frame with the factory bolt. Install the filler cap. Tighten all hose clamps securely.

» UNDER BODY/FRAME RAILS

50. Install the short end of the provided L-shaped ground strap relocation to the passenger's side frame rail with the factory bolt [Figure 29](#). Attach the ground strap(s) to the bracket with a 1/4" x 3/4" bolt, nut and two 1/4" SAE washers.
51. Check all brake lines, wire harnesses, etc. to see that they are not rubbing on any abrasive surfaces. Use provided zip ties to secure lines were needed.

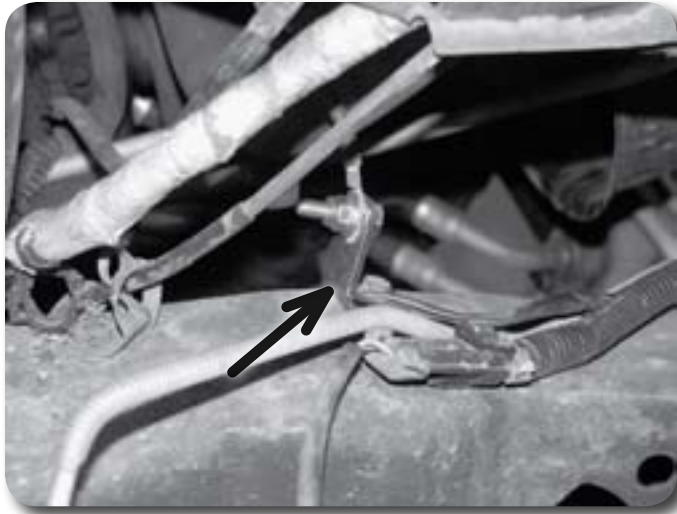


Figure 29

» FRONT/UNDER HOOD

52. 4wd only: Measure and mark $\frac{1}{2}$ " to the inside of the positive battery cable terminal box bracket mounting holes on the passenger's side core support **Figure 15**. Drill a $\frac{1}{8}$ " hole at each of the marks.
53. 4wd only: Mount the terminal box bracket to the new holes with the factory mounting screws.
54. 4wd only: Measure and mark $\frac{1}{2}$ " to the inside of the axle actuator mounting holes on the inner fender **Figure 16**. Drill a $\frac{3}{8}$ " hole at each mark.
55. 4wd only: Mount the axle actuator to the inner fender using the new holes and the factory mounting bolts.
56. 4wd only: Install the battery tray to the original mounting holes using the original mounting bolts.
57. 4wd only: Install the battery on the battery tray and secure with the factory retaining bracket. Do not attach the battery cables at this time.
58. Install the provided ground strap extension on the ground stud at the passenger's side firewall and retain with the factory nut. Attach the ground strap to the bracket stud with a $\frac{1}{4}$ " nut and $\frac{1}{4}$ " SAE washer **Figure 30**.

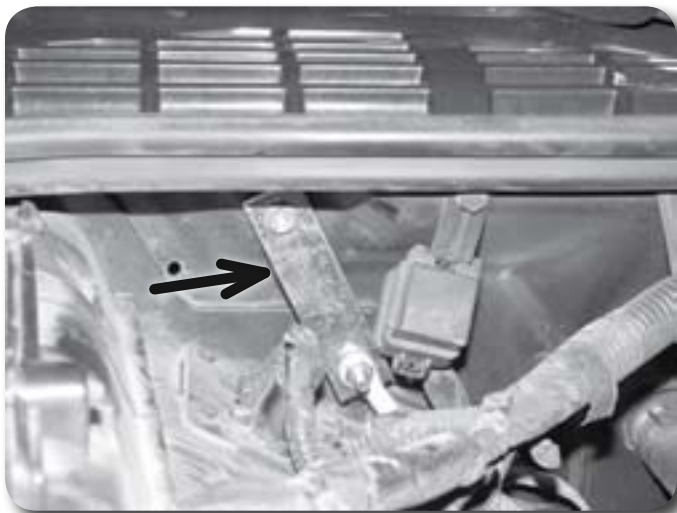


Figure 30

59. Remove the four nut clips from the lower radiator fan shroud **Figure 31**.



Figure 31

60. Install the upper fan shroud in the vehicle and attach it to the core support with three factory bolts **Figure 11**.
61. Attach the lower fan shroud to the upper fan shroud with four 2" long metal spacers, four 3/8" x 3-1/2" bolts, nuts, and sixteen 3/8" USS washers. The washers mount on both sides of the shroud flange to "sandwich" the plastic **Figure 32**.

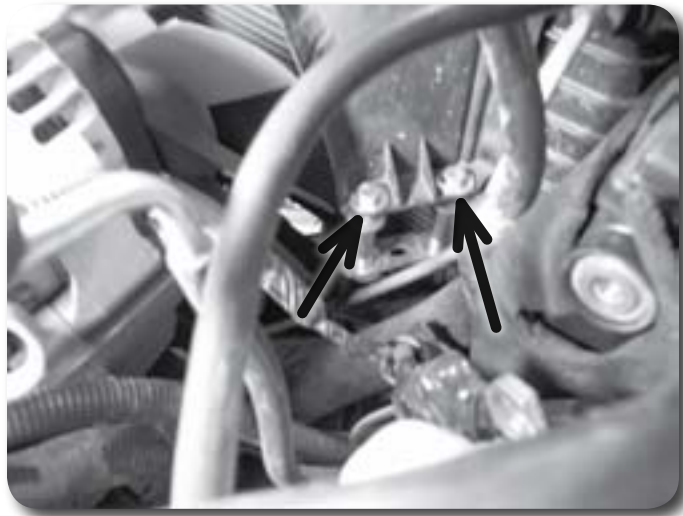


Figure 32

62. Reattach the air box cover to the air box. Reattach the intake hose to the throttle body.
63. Locate the lower fan shroud bracket in the shroud and against the lower surface of the core support. Using the bracket as a template, mark the mounting hole on the core support. Drill a 1/8" hole at the mark **Figure 33**. Mount the shroud bracket to the core support with a #12 x 3/4" sheet metal screw.



Figure 33

64. Install the oil filter relocation brackets to the original mounting holes in the core support with the provided 3/8" x 4" bolts, 1/2" x 2.970" sleeves, nuts and 3/8" USS washers. The front bracket is flat and the rear bracket should bend forward with the notch to the passenger's side of the vehicle fitting over the new radiator shroud bracket **Figure 34**. The lower holes will be offset to the driver's side. Leave bolts loose.

Step 64 Note

The rear mounting holes in the core support may need to be drilled out slightly to accept the new 3/8" hardware.



Figure34

65. Attach the factory filter bracket to the relocation brackets with the factory shoulder bolts. Tighten the four bolts securely.
66. Install the front plastic air scoop to the core support in the original location using the factory plastic fasteners.
67. Set four 2" x 2" body blocks on the four front bumper mounting points **Figure 35**. Set the front bumper up to the mounts and mark where the front valance needs to be trimmed to clear the frame. The valance may not require trimming in some cases.

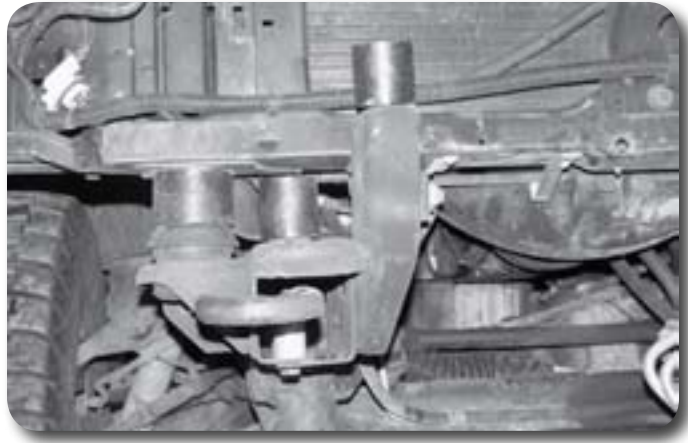


Figure35

68. After the bumper is properly trimmed, mount the bumper to the spacers and the frame with 10mm x 80mm bolts and 3/8" USS washer through the bumper, spacers and thread into the original nut tabs on the frame. Leave hardware loose.
69. Install the side bumper brackets to the bumper using the factory bolts. Install the new side bumper relocation bracket to the frame through the lower factory hole. Mount the outside bumper bracket to the relocation bracket through the upper-most mounting hole with a 3/8" x 1" bolt, nut, and two 3/8" USS washers
Figure 36.



Figure36

70. Mark the factory side bracket to drill a hole through to match the middle hole of the relocation bracket and outside factory mounting hole on the frame. Drill a 7/16" hole at the mark.
71. Install the brackets to the frame with the factory bolts in the lower two holes and the 3/8" hardware in the upper holes. Leave hardware loose.
72. Adjust the bumper using the measurements made at the beginning of the installation and tighten all the mounting hardware starting with the four main mounts in front.
73. Install the grill by first reattaching the turn signal and running lights. Align the retain clips in the core support holes and carefully push the grill into place.
74. If equipped, install the tow hook spacer block in the frame rail and line up the holes with the original tow hook mounting holes.

75. Apply Loctite to the threads of four 10mm x 70mm class 10.9 bolts. Insert the tow hook in the frame rail and line up the holes with the spacer and frame. Install the 10mm x 70mm bolts with 3/8" SAE washers through the frame, spacer and into the threaded tow hook mounting holes. Tighten the bolts securely.
76. Install the front skid plate in the original location with the six factory mounting bolts. **Figure 37.**



Figure 37

77. Check all fasteners for proper torque.
78. Adjust headlights.
79. Check hardware after 500 miles.

ZR-2 Models Only

On some ZR-2 models the steering column angle may be too steep after the body is lifted, resulting in steering bind. After the lift is completed, take the vehicle for a slow test drive and turn the steering wheel through its full range. If any steering bind is detected, follow the instructions below to correct the angle.

1. Remove the negative battery cable, then the positive battery cable. This is necessary to ensure that the air bag does not deploy while working around the steering column.
2. Remove the lower plastic dash panel from under the steering column.
3. Four studs mount the steering column to the underside of the dash. Locate the two vertical studs near the instrument panel and the two horizontal studs near the firewall. Remove the four retaining nuts and lower the steering column to the floor. Do not disconnect any wire harnesses. Do not disconnect the steering column from the steering shaft.
4. The flange holes that mount to the horizontal studs near the firewall need to be elongated for adjustment. Using a hand file or power grinding tool, oblong the holes up to the edge of the mark that was left by the washer.
5. Reattach the steering column to the dash with the factory nuts. Before the hardware is tightened, pull down on the column so that the horizontal studs are at the top of the newly slotted holes. Tighten the nuts securely.
6. Check that the steering shaft boot at the firewall is in its proper location.
7. Reconnect the positive then negative battery cables.

Step 76 Note

In some cases the skid plate may need to be trimmed slightly for oil line clearance as a result of lowering the oil filter location

Post-Installation Warnings

1. Check all fasteners for proper torque. Check to ensure for adequate clearance between all rotating, mobile, fixed, and heated members. Verify clearance between exhaust and brake lines, fuel lines, fuel tank, floor boards and wiring harness. Check steering gear for clearance. Test and inspect brake system.
2. Perform steering sweep to ensure front brake hoses have adequate slack and do not contact any rotating, mobile or heated members. Inspect rear brake hoses at full extension for adequate slack. Failure to perform hose check/replacement may result in component failure. Longer replacement hoses, if needed can be purchased from a local parts supplier.
3. Perform head light check and adjustment.
4. Re-torque all fasteners after 100 miles. Always inspect fasteners and components during routine servicing.