



C9909# Installation Instructions 2007-09 Chevy/GMC, 1/2 Ton, Crew Cab, 2/4wd 1.5" Rear Bumper Bracket Kit

Read and understand all instructions and warnings prior to installation of product and operation of vehicle.

Zone Offroad Products recommends this system be installed by a professional technician. In addition to these instructions, professional knowledge of disassembly/ reassembly procedures and post installation checks must be known. Minimum tool requirements include the following: Assorted metric and standard wrenches, hammer, hydraulic floor jack and a set of jack stands. See the "Special Tools Required" section for additional tools needed to complete this installation properly and safely.

» PRODUCT SAFETY WARNING

Certain Zone Suspension Products are intended to improve off-road performance. Modifying your vehicle for off-road use may result in the vehicle handling differently than a factory equipped vehicle. Extreme care must be used to prevent loss of control or vehicle rollover. Failure to drive your modified vehicle safely may result in serious injury or death. Zone Offroad Products does not recommend the combined use of suspension lifts, body lifts, or other lifting devices.

You should never operate your modified vehicle under the influence of alcohol or drugs. Always drive your modified vehicle at reduced speeds to ensure your ability to control your vehicle under all driving conditions. Always wear your seat belt.

» TECHNICAL SUPPORT

Live Chat provides instant communication with Zone tech support. Anyone can access live chat through a link on www.zoneoffroad.com.

www.zoneoffroad.com may have additional information about this product including the latest instructions, videos, photos, etc.

Send an e-mail to tech@zoneoffroad.com detailing your issue for a quick response.

888.998.ZONE Call to speak directly with Zone tech support.

Difficulty Level

easy 1 (2) 3 4 5 difficult

Estimated installation: 1-2 hours

Special Tools Required

Reciprocating Saw or Equivalent

» PRE-INSTALLATION NOTES

1. Special literature required: OE Service Manual for model/year of vehicle. Refer to manual for proper disassembly/reassembly procedures of OE and related components.
2. Adhere to recommendations when replacement fasteners, retainers and keepers are called out in the OE manual.
3. Larger rim and tire combinations may increase leverage on suspension, steering, and related components. When selecting combinations larger than OE, consider the additional stress you could be inducing on the OE and related components.
4. Post suspension system vehicles may experience drive line vibrations. Angles may require tuning, slider on shaft may require replacement, shafts may need to be lengthened or trued, and U-joints may need to be replaced.
5. Secure and properly block vehicle prior to installation of Zone Offroad Products. Always wear safety glasses when using power tools.
6. If installation is to be performed without a hoist, Zone Offroad Products recommends rear alterations first.
7. Due to payload options and initial ride height variances, the amount of lift is a base figure. Final ride height dimensions may vary in accordance to original vehicle attitude. Always measure the attitude prior to beginning installation.

rev060313

Kit Contents

| Qty | Part |
|-----|----------------------------|
| 2 | 1.5" x 2" Bumper Spacer |
| 1 | Rear Bumper Bracket (drv) |
| 1 | Rear Bumper Bracket (pass) |
| 1 | Bolt Pack - Rear Bumper |

THIS BUMPER MOUNT KIT IS DESIGNED FOR USE WITH ZONE OFFROAD 1.5" BODY LIFT KIT #C9150 OR COMBO KIT #C1350. PERFORM THIS KIT INSTALLATION AFTER THE BODY LIFT OR COMBO KIT IS INSTALLED IN THE VEHICLE.

INSTALLATION INSTRUCTIONS

1. Park the vehicle on a clean, flat surface and block the rear wheels for safety.
2. Lower the spare tire and remove it from the vehicle. See vehicle owner's manual for spare removal procedures.
3. Locate the rear wire connector cluster on the rear, driver's side frame crossmember **Figure 1**. Disconnect the license plate light harness and back-up sensor harness (if equipped).

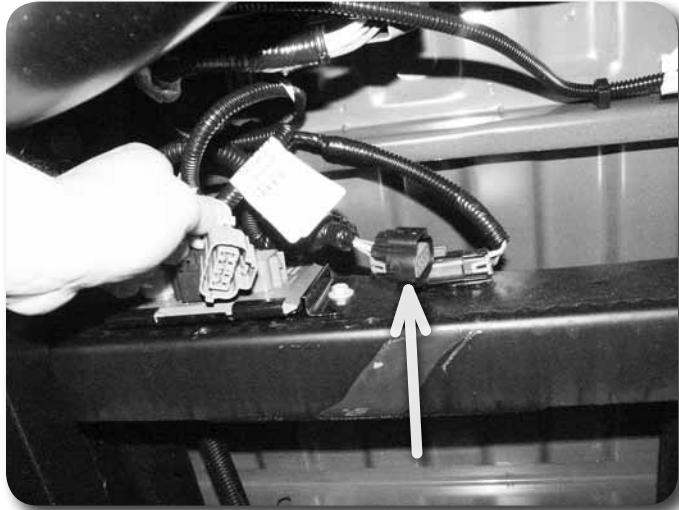


Figure 1

4. If equipped, disconnect the trailer wiring connector from the bumper **Figure 2**.

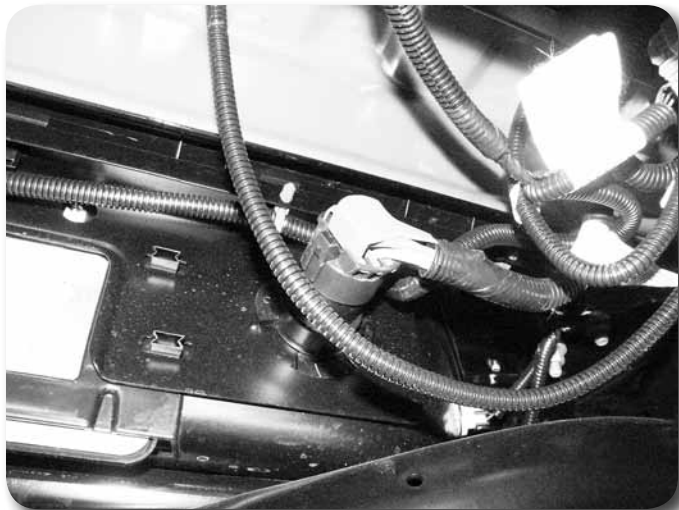


Figure 2

5. If equipped, remove the two bolts mounting the rear bumper to the receiver hitch Figure 3.

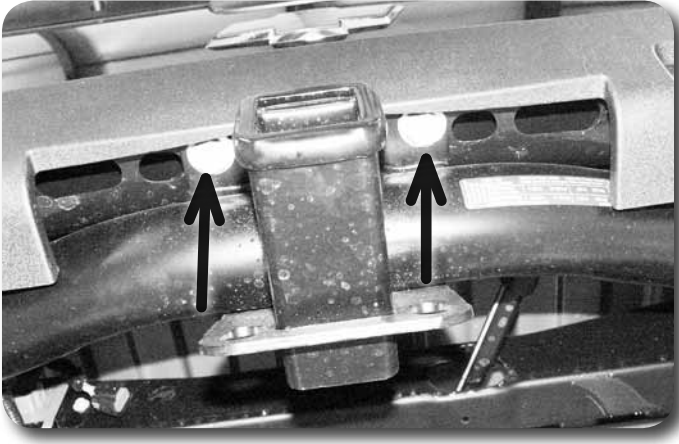


Figure 3

6. Remove the 4 bolts (8 total) mounting the rear bumper to the frame rails. 3 are accessed from the side of the frame Figure 4A and one up through the bottom Figure 4B. Remove the bumper from the vehicle. Save all hardware.

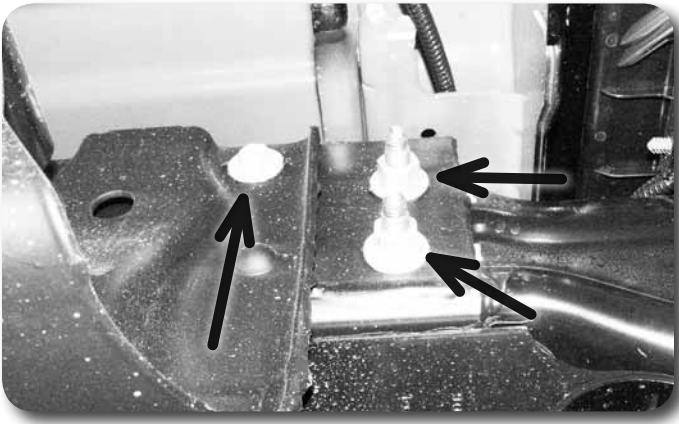


Figure 4A

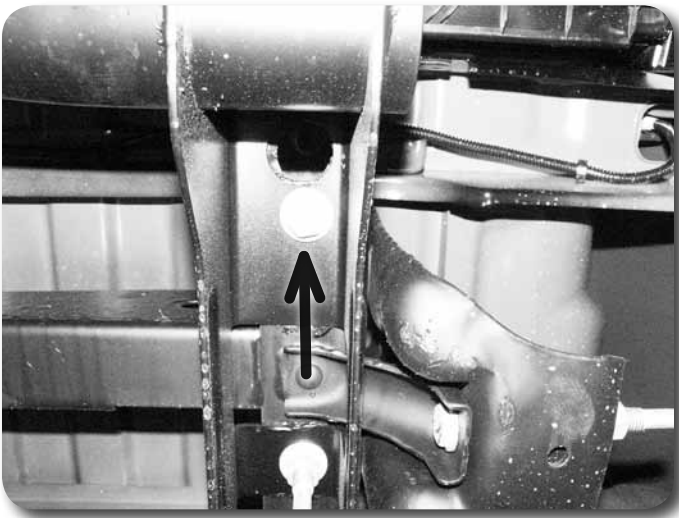


Figure 4B

7. The rear bumper must be modified to install the new rear bumper brackets. Measure back on bracket from the edge of the bottom tab (tab that goes against the bottom surface of the frame) 4-1/2" and make a vertical cut line **Figure 5**. Cut the end of the bracket off along the line. Remove any burrs and paint exposed metal to prevent corrosion. *Note: Bumper is shown upside down in picture.*



Figure 5

8. Locate the existing hole and slot in the bumper bracket that was trimmed **Figure 6**. These are located farther inside the bumper. Attach the new provided bumper brackets to the bumper using these existing holes and slots. Fasten the new brackets to the factory bracket with 1/2" x 1-1/4" bolts, nuts and 1/2" SAE washer. The brackets should mount to the inside surface of the factory bracket and offset toward the outside of the bumper **Figure 7**. Adjust the brackets so they are visually square with the top edge of the factory bracket and snug hardware.

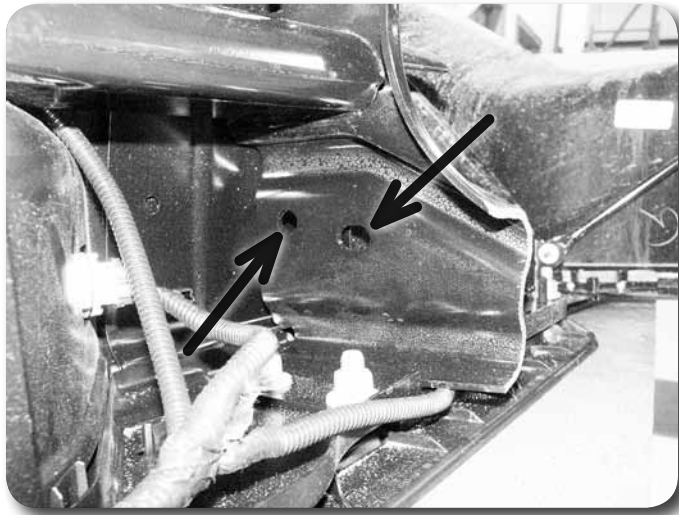


Figure 6

9. Using the new bumper brackets as templates. Mark the third bracket mounting hole to be drilled **Figure 7**. Remove the brackets and drill a 1/2" hole at each mark.
10. Reinstall the bumper brackets on the bumper with the same hardware along with an additional 1/2" x 1-1/4" bolt, nut and washers for the hole just drilled. Leave hardware loose.

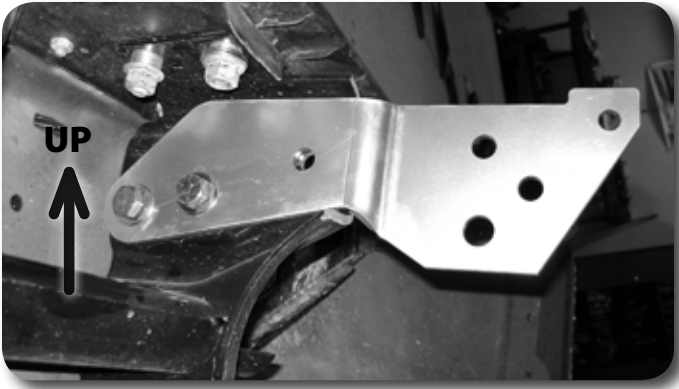


Figure 7

11. If equipped with a receiver hitch: Fasten the receiver hitch to the bottom of the frame rails through the rear-most holes using the provided 5/8" x 1-1/2" bolts, nuts and 5/8" USS washers. **Figure 8** Torque bolts to 100 ft-lbs.



Figure 8

12. Remove tab and clearance above it slightly (approximately 1/4") with a rotary grinding tool to create extra clearance for the spare tire winch tube. **Figure 9**



Figure 9

Step 12 Note

Use caution to not create any sparks near the fuel tank.

13. Install the modified rear bumper in the vehicle **Figure 10**. Be sure the new brackets are inside the frame rails and the spare tire winch tubes align **Figure 11**. Fasten the bumper to the original frame mount holes with the factory bolt tab and nuts. Fasten the bracket through the remaining front-upper hole **Arrow - Figure 11** with the original 10mm bolt and provided 10mm nut and washer. Leave hardware loose.

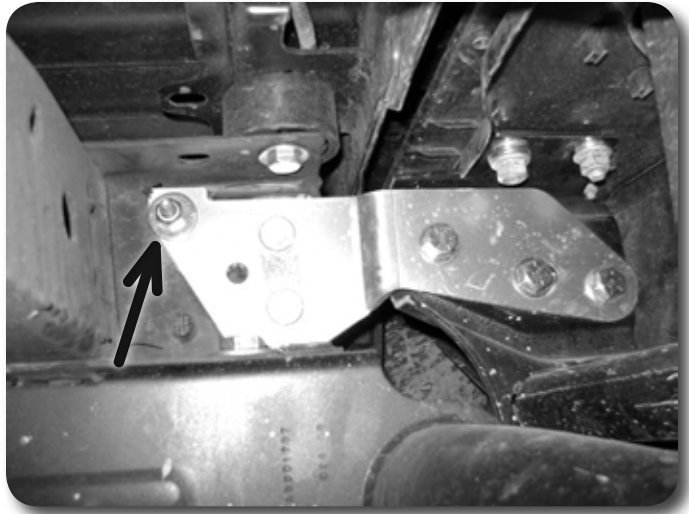


Figure 10



Figure 11

14. If equipped with a receiver hitch, install the provided 1.5" tall x 2" OD bumper spacers between the hitch and the bumper. Figure 12 Fasten the bumper to the hitch with 14mm x 80mm bolts and 9/16" SAE washers. Leave loose.

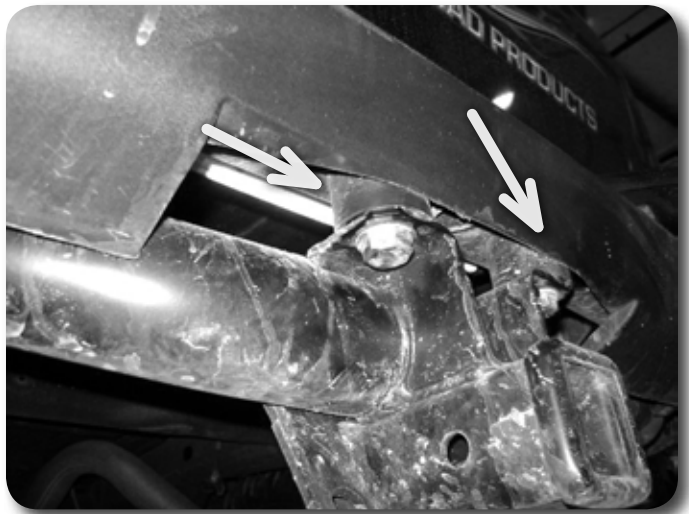


Figure 12

15. Tighten all bumper mounting hardware starting with the bumper-to-bracket hardware first. Torque the hardware to the following specs: ½” and 12mm hardware – 65 ft-lbs, 14mm hardware – 95 ft-lbs, and 10mm hardware – 40 ft-lbs.
16. Reconnect all bumper wiring.

Post-Installation

1. Check all hardware for proper torque.
2. Check hardware after 500 miles.

Post-Installation Warnings

1. Check all fasteners for proper torque. Check to ensure for adequate clearance between all rotating, mobile, fixed, and heated members. Verify clearance between exhaust and brake lines, fuel lines, fuel tank, floor boards and wiring harness. Check steering gear for clearance. Test and inspect brake system.
2. Perform steering sweep to ensure front brake hoses have adequate slack and do not contact any rotating, mobile or heated members. Inspect rear brake hoses at full extension for adequate slack. Failure to perform hose check/replacement may result in component failure. Longer replacement hoses, if needed can be purchased from a local parts supplier.
3. Perform head light check and adjustment.
4. Re-torque all fasteners after 100 miles. Always inspect fasteners and components during routine servicing.