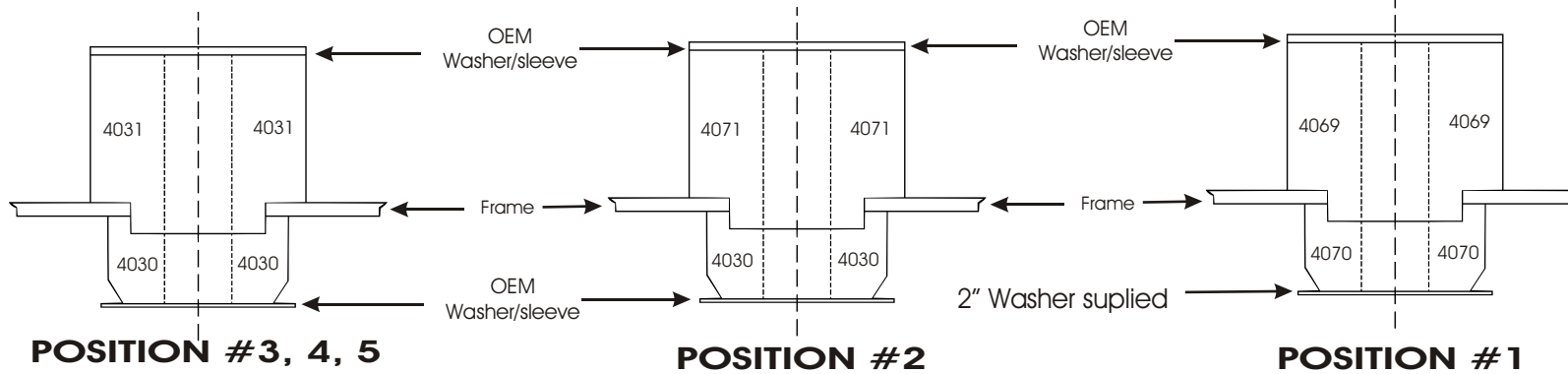


INSTRUCTION SHEET FOR SET #4-4109

Read this instruction sheet thoroughly before initiating any work!

It is recommended that if you are unfamiliar with this type of work that you refer to a qualified service center specializing in this type of work. It is also recommended that if you choose to do this work yourself that a factory service manual be obtained for the proper procedures pertaining to removal, replacement and proper torque specifications for your vehicle. This instruction set is intended as a guideline for the safe installation of Energy Suspension's polyurethane bushings, once you have removed the factory components from your vehicle.

© 2006 Energy Suspension. All rights reserved.
May not be reproduced, in any form, or by any means,
without the written consent of Energy Suspension.



POSITION #3, 4, 5

POSITION #2

POSITION #1

17029
10/JAN/06 BRH

Top OEM washer sleeve

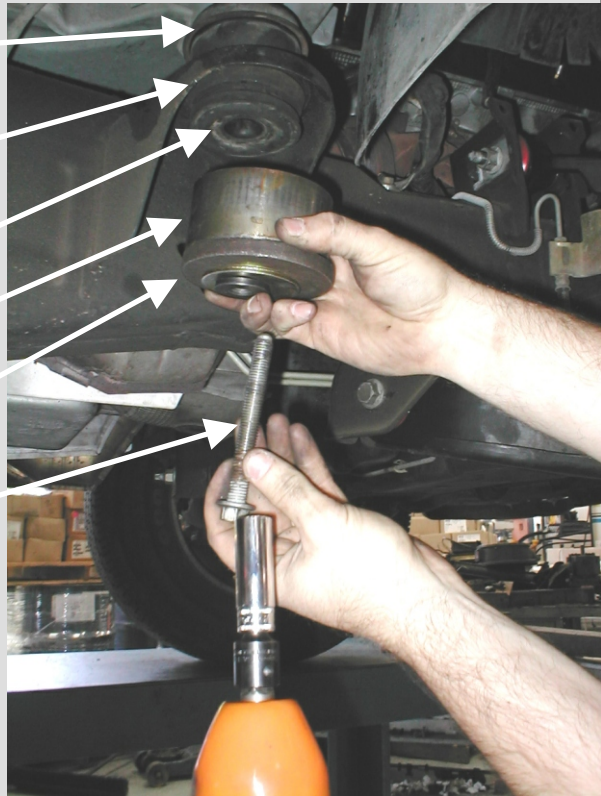
Frame perch

Bottom OEM washer sleeve

Tube

Washers

OEM bolt



NOTE: Be sure on disassembly to note the quantity and positions of any shims that may have been inserted for body alignment. These shims will have to be reused to insure proper body alignment.

REMOVAL

*Spray generously all nuts to be removed with your favorite rust buster.

1. Remove bolts of mounts from inside of cab. Remove bolts from one side at a time, leave other side loose.
2. The body mounts are pressed together by a flair fit from the factory. A simple "puller" assembly can be made with a tube and some washers. (**See pic**). Placing the OEM bolt thru the "puller" assembly and tightening it will free the body mounts from the frame.
3. Remove OEM bushings.
4. Reinstall with new bushings supplied.
5. Tighten all bolts to factory specifications.