



**4331 EUCALYPTUS AVE. ~~ CHINO, CA 91710**  
**909-597-7800 Fax 909-597-7185**  
**FTS8023 / FTS8046**  
**Dual Steering Stabilizer System**  
**2005-17 Ford F250 & F350 4WD**

Qty	Part #	Description FTS8023
2	FT7006	Steering Stabilizer
1	FT30145BK	Axle Bracket
2	FT30149	Tie Rod Brackets
1	FT739U	Axle U-Bolt
1	FT30312	Hdwr Sub-Assembly Kit

Qty	Part #	Description FTS8046
2	FTS6604	Steering Stabilizer
1	FT30145BK	Axle Bracket
2	FT30149	Tie Rod Brackets
1	FT739U	Axle U-Bolt
1	FT30312	Hdwr Sub-Assembly Kit

FT30312		Hdwr Sub-Assembly Kit
Qty	Part #	Description
4	FT740U	Tie Rod U-Bolt
2	FT140357	Shock Stud Kit
1	FT58H	Axle u-bolt hardware
8	37160003052	3/8"-16 Nyloc Nut
8	37000005081	3/8" SAE Flat Washer
2	50132001081	1/2"-13 x 2" Hex Bolt
2	50000005081	1/2" SAE Flat Washer
1	FTLOCK	Thread Locking Compound
1	FTAS12	Sticker
1	FTREGCARD	Registration Card
2	FT8023i	Instruction Sheet

FT30312		Hdwr Sub-Assembly Kit
Qty	Part #	Description
4	FT740U	Tie Rod U-Bolt
2	FT140357	Shock Stud Kit
1	FT58H	Axle u-bolt hardware
8	37160003052	3/8"-16 Nyloc Nut
8	37000005081	3/8" SAE Flat Washer
2	50132001081	1/2"-13 x 2" Hex Bolt
2	50000005081	1/2" SAE Flat Washer
1	FTLOCK	Thread Locking Compound
1	FTAS12	Sticker
1	FTREGCARD	Registration Card
2	FT8023i	Instruction Sheet

**TOOL LIST:**

- Assorted Metric & Standard Wrenches
- Torque Wrench
- Measuring Tape
- Die Grinder With Cut-Off Wheel

**READ BEFORE BEGINNING INSTALL**

**READ ALL INSTRUCTIONS THOROUGHLY FROM START TO FINISH BEFORE BEGINNING INSTALLATION.**

**CHECK ALL PARTS INCLUDED IN THIS KIT TO THE PARTS LIST ABOVE BEFORE BEGINNING INSTALLATION OF THIS KIT. IF ANY PARTS ARE MISSING, CONTACT FABTECH AT 909-597-7800.**

**DO NOT ALTER THE FINISH OF THESE COMPONENTS, EXAMPLE- CHROMING, ZINC PLATING OR PAINTING. CHANGING THE FINISH CAN CAUSE STRUCTURAL FATIGUE OF COMPONENTS.**

**THIS STABILIZER KIT WILL NOT WORK ON STOCK HEIGHT VEHICLES. IT IS DESIGNED TO WORK ONLY ON VEHICLES WITH FABTECH LIFT SYSTEMS**

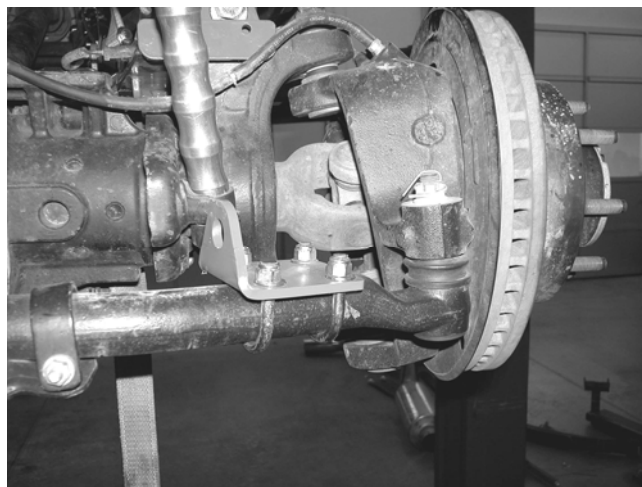
**THIS SYSTEM WILL ONLY WORK IN CONJUNCTION WITH FABTECH 4", 6", 8" AND 10" LIFT SYSTEMS.**

## Begin Installation:

1. Disconnect the negative terminal on the battery. Park the truck on level ground and set the emergency brake. **NOTE: WHEN INSTALLING ON 2017 MODELS, LEAVE FACTORY STABILIZER INSTALLED.**
2. Locate FT30145 Axle Bracket and FT140357 Shock Stud kits. Attach the stud kits to the two front holes on the axle bracket and torque to 55 ft lbs. .
3. Locate FT30145 Axle Bracket with the shock studs installed and place the axle bracket in the center of the axle positioning it straight forward. Using the supplied FT739U U-Bolt and 5/8" hardware, attach the axle bracket to the axle. Leave loose at this time. SEE PHOTO BELOW.



4. Working from the driver side of the truck, locate FT30149 tie rod end bracket and position it 2" from the outer tie rod end. Using the Supplied FT740U U-Bolt and 3/8" hardware attach the bracket to the tie rod end. Leave loose at this time. SEE PHOTO BELOW.



5. Locate FT7006 or FTS6604 Steering Stabilizer and attach it to the stud on the axle bracket using the supplied hardware along with a small amount of the supplied thread locking compound. Torque bolt to 30 ft. lbs.
6. Extend the Steering Stabilizer out 5 1/2" and attach the stud end of the stabilizer to the tie rod bracket using the supplied stem bushing and hardware. You may need to move the tie rod end bracket from where it was originally positioned. Tighten the stem hardware until the bushings begin to squeeze out.
7. Repeat steps four through six on the passenger side of the truck.
8. Torque the Axle Bracket U-Bolt to 80 ft lbs. Torque the Tie Rod bracket U-Bolts to 32 ft lbs with the stabilizer still extended 5 1/2".

9. Once the tie rod u-bolts are torque to 32 ft. lbs. using a die grinder with a cut off wheel, trim the residual length of the u-bolt flesh with the nut. SEE PHOTO BELOW.



10. Steer the truck fully to the left and right to make sure the steering stabilizers are not bottoming out. Adjust the tie rod end bracket as needed. Check the clearance of the shock stud end to the u-bolts previously cut for proper clearance.
11. Re-torque all the hardware after 200 miles.

**RETORQUE ALL NUTS, BOLTS AND LUGS AFTER 50 MILES AND PERIODICALLY THEREAFTER.**

For technical assistance call: 909-597-7800

## Product Warranty and Warnings-

Fabtech provides a Limited Lifetime Warranty to the original retail purchaser who owns the vehicle, on which the product was originally installed, for defects in workmanship and materials.

The Limited Lifetime Warranty excludes the following Fabtech items; bushings, bump stops, ball joints, tie rod ends, limiting straps, cross shafts, heim joints. These parts are subject to wear and are not considered defective when worn. They are warranted for 60 days from the date of purchase for defects in workmanship.

Take apart shocks are considered a serviceable shock with a one year warranty on leakage only. Service seal kits are available separately for future maintenance. All other shocks are covered under our Limited Lifetime Warranty.

Fabtech does not warrant any product for finish, alterations, modifications and/or installation contrary to Fabtech's instructions. Alterations to the finish of the parts including but not limited to painting, powdercoating, plating and/or welding will void all warranties. Some finish damage may occur to parts during shipping which is considered normal and is not covered under warranty.

Fabtech products are not designed nor intended to be installed on vehicles used in race applications or for racing purposes or for similar activities. (A "RACE" is defined as any contest between two or more vehicles, or any contest of one or more vehicle against the clock, whether or not such contest is for a prize). This warranty does not include coverage for police or taxi vehicles, race vehicles, or vehicles used for government or commercial purposes. Also excluded from this warranty are sales outside of the United States of America.

Installation of most suspension products will raise the center of gravity of the vehicle and will cause the vehicle to handle differently than stock. It may increase the vehicle's susceptibility to a rollover, on road and off road, at all speeds. Extreme care should be taken to operate the vehicle safely at all times to prevent rollover or loss of control resulting in serious injury or death. Fabtech front end Desert Guards may impair the deployment or operation of vehicles equipped with supplemental restraining systems/air bag systems and should not be installed if the vehicle is equipped as so.

Fabtech makes every effort to ensure suspension product compatibility with all vehicles listed in the catalog, but due to unknown auto manufacturers production changes and/or inconsistencies by the auto manufacturer, Fabtech cannot be responsible for 100% compatibility, including the fitment of tire and wheel sizes listed. The Tire and Wheel sizes listed in Fabtech's catalog are only a guideline for street driving with noted fender trimming. Fabtech is not responsible for damages to the vehicle's body or tires.

Fabtech's obligation under this warranty is limited to the repair or replacement, at Fabtech option, of the defective product only. All costs of removal, installation or re-installation, freight charges, incidental or consequential damages are expressly excluded from this warranty. Fabtech is not responsible for damages and/or warranty of other vehicle parts related or non related to the installed Fabtech product. This warranty is expressly in lieu of all other warranties expressed or implied. This warranty shall not apply to any product that has been subject to accident, negligence, alteration, abuse or misuse as determined by Fabtech.

Fabtech suspension components must be installed as a complete system including shocks as shown in our current catalog. All warranties will become void if Fabtech parts are combined and/or substituted with other aftermarket suspension products. Combination and/or substitution of other aftermarket suspension parts may cause premature wear and/or product failure resulting in an accident causing injury or death. Fabtech does not warrant products not manufactured by Fabtech.

Installation of Fabtech product may void the vehicles factory warranty; it is the consumer's responsibility to check with their local vehicle's dealer for warranty disposition before the installation of the product.

It is the responsibility of the distributor and/or the retailer to review all warranties and warnings of Fabtech products with the consumer prior to purchase.

Fabtech reserves the right to supercede, discontinue, change the design, finish, part number and, or application of parts when deemed necessary without written notice. Fabtech is not responsible for misprints or typographical errors within the catalog or price sheet.