



## Installation Instructions

### Chevy Winch Bumper

Product Number: A1350-A1352

Application: '05-Current Chevy  
2500-3500 HD

## SAFETY

### **Your safety and the safety of others is very important.**

- In order to help you make informed decisions about safety, we have provided installation instructions and other information.
- These instructions alert you to potential hazards that could hurt you or others.
- Please do a job safety analysis (JSA) before each task to identify potential hazards for your situation and remove/protect against them.
- You must use your own good judgment, and take your time.

**Read and understand all safety precautions and instructions before installing this product.**

THIS PRODUCT IS FOR OFFROAD USE ONLY. ALL LIABILITY FOR INSTALLATION AND USE RESTS WITH THE OWNER.

**CARELESS INSTALLATION AND OPERATION CAN RESULT IN SERIOUS INJURY OR EQUIPMENT DAMAGE.**

## Injury hazard

### **Failure to observe these instructions could lead to severe injury or death.**

- ☐ **Always** remove jewelry and wear eye protection.
- ☐ **Always** use extreme caution when jacking up a vehicle for work. Set emergency brake and use tire blocks. Locate and use the vehicle manufacturers designated lifting points. Use jack stands.
- ☐ **Always** use appropriate and adequate care in lifting components into place.
- ☐ **Always** insure components will remain secure during installation and operation.
- ☐ **Always** wear safety glasses when installing this kit. A drilling operation will cause flying metal chips. Flying chips can cause serious eye injury.
- ☐ **Always** use extreme caution when drilling on a vehicle. Thoroughly inspect the area to be drilled (on both sides of material) prior to drilling, and relocate any objects that may be damaged.
- ☐ **Always** use extreme caution when cutting and trimming during fitting.
- ☐ **Always** tighten all nuts and bolts securely per installation instructions.
- ☐ **Always** route electrical cables carefully. Avoid moving parts, components that become hot and rough or sharp edges.
- ☐ **Always** insulate and protect all exposed wiring and electrical terminals.
- ☐ **Always** perform regular inspections and maintenance on mounts and related hardware.





## Installation Instructions

### Chevy Winch Bumper

Product Number: A1350-A1352

Application: '05-Current Chevy  
2500-3500 HD

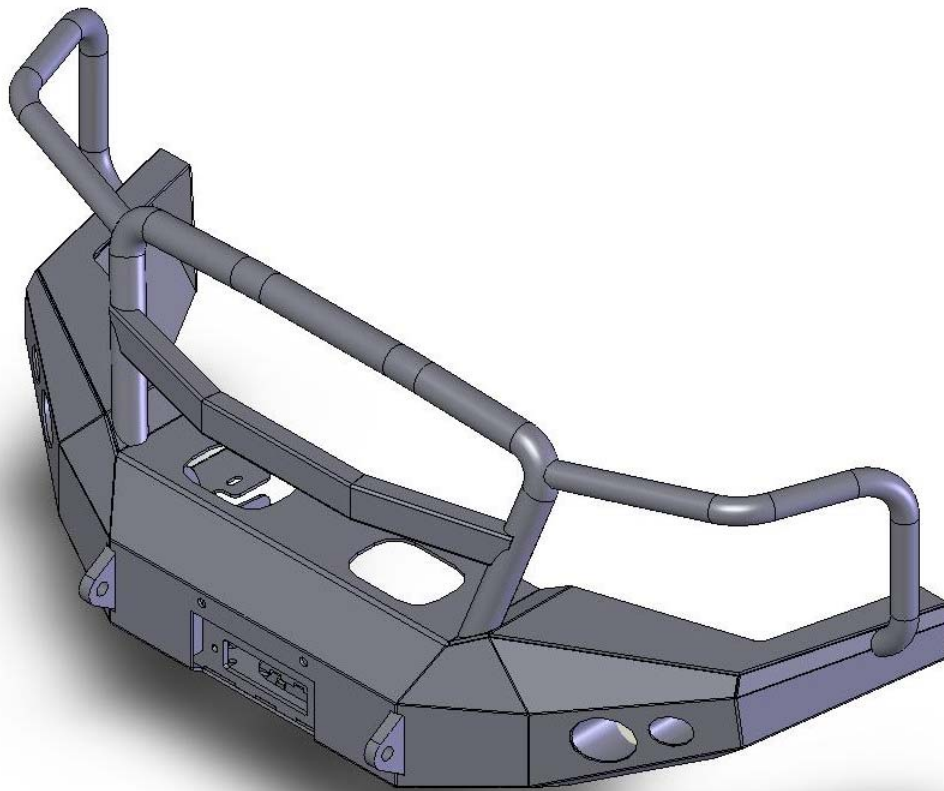
#### I. Overview

Congratulations on your purchase of the industries' best and most stylish Chevy Winch Bumper! This bumper has been **engineered** for strength while keeping the weight down. It can accept the Warn 16.5 winch... and look cool doing it.

This product has also been **engineered** to allow alignment in three directions plus "castor" so you will end up with a very professional fit.

Your bumper was designed in 3-D from digitized data, CNC laser cut, fabricated, and powder coated... all in the U.S.A.

Enjoy the fit and finish of a quality Chevy Winch Bumper from Fab Fours Inc!





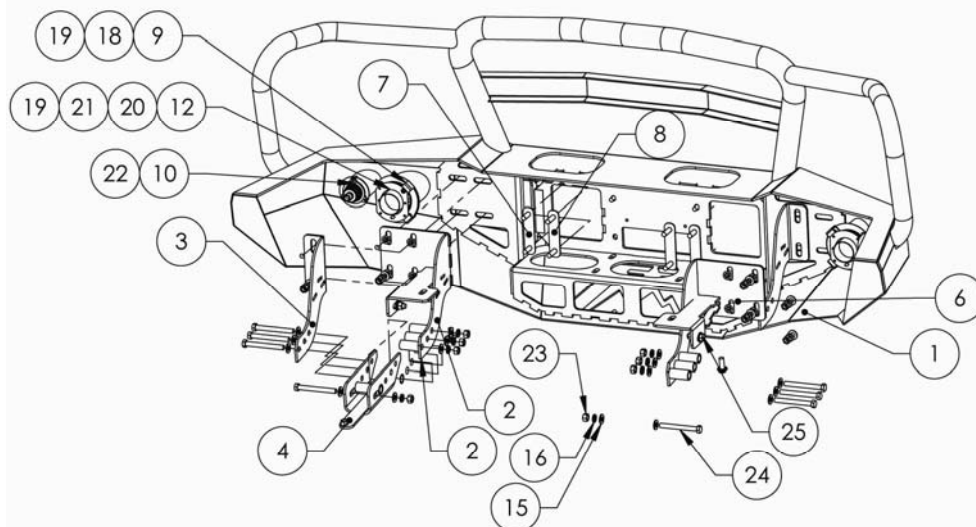
# Installation Instructions

## Chevy Winch Bumper

Product Number: A1350-A1352

Application: '05-Current Chevy  
2500-3500 HD

### II. Parts List



ITEM NO.	PART NUMBER	DESCRIPTION	A1350/QTY.
1	20020	CH05-A FRONT BUMPER, WELDMENT, WINCH	1
2	20021	CH05-A FRONT BUMPER MOUNTING ASSY, LEFT, OUTSIDE	1
3	20022(C)	CH05-A RIGHT FRONT BUMPER MOUNTING ASSY, PLATE, FLOATING	1
4	20023	CH05-A FRONT BUMPER MOUNTING ASSY, FRAME, INSERT ASSY	1
5	20024	CH05-A FRONT BUMPER MOUNTING ASSEMBLY, FRAME, INSERT ASSEMBLY, PASSENGER	1
6	20025	CH05-A FRONT BUMPER MOUNTING ASSY, RIGHT, OUTSIDE	1
7	20027	CH05-A 1 1/2 Inch Bolt Strip	2
8	20117	CH05-A 1 3/4 Inch Bolt Strip	2
9	20124	90mm Fog Light Adapter Bracket	2
10	61285	60mm Turn Indicator	2
11	20026(C)	CH05-A RIGHT FRONT BUMPER MOUNT ASSY	1
12	10002	90mm Fog Light Assy	2
13	61306	PUSH NUT RETAINER, 1/2"	8
14	60119	1/2" -13 UNC THREAD x 1 1/4" LENGTH HEX HEAD CAP SCREW	2
15	61164	1/2" SCREW DIA, SAE STANDARD FLAT WASHER	28
16	61307	1/2" SCREW DIA REGULAR SPRING LOCK WASHER	18
17	60552	0.4375 -14 UNC THREAD x 1" LENGTH SOCKET HEAD CAP SCREW	2
18	60883	1/4" -20 UNC THREAD x 1/2" LENGTH BUTTON HEAD SOCKET CAP SCREW	1
19	61230	1/4" -20 THREAD HEX NUT, GRADE 8	2
20	60872	#10 -32 UNF THREAD x 1/2" LENGTH BUTTON HEAD SOCKET CAP SCREW	1
21	61153	#10 SCREW DIA, SAE STANDARD FLAT WASHER	2
22	61287	PAN HEAD THREAD FORMING SCREW, #8-18 x 1"	4
23	61238	1/2" -13 THREAD HEX NUT, GRADE 8	16
24	60130	1/2" -13 UNC THREAD x 4 1/2" LENGTH HEX HEAD CAP SCREW, GRADE 8	8
25	60120	1/2" -13 UNC THREAD x 1 1/2" LENGTH HEX HEAD CAP SCREW, GRADE 8	2





## Installation Instructions

### Chevy Winch Bumper

Product Number: A1350-A1352

Application: '05-Current Chevy  
2500-3500 HD

### III. Tools Required

- ☐ Socket Wrench With Extension
- ☐ 5/32" Allen Wrench
- ☐ 1/8" Allen Wrench
- ☐ 18mm Socket
- ☐ 3/4" Socket
- ☐ 3/4" Open End Wrench
- ☐ 7/16" Open End Wrench
- ☐ 3/8" Open End Wrench
- ☐ 7/32" Socket
- ☐ Phillips Screwdriver
- ☐ Hammer

### IV. Vehicle Preparation

- ☐ A) Disconnect factory fog lamp connectors (if applicable), zip tie harness to frame.
- ☐ B) Remove fasteners holding OEM bumper to chassis using a 15mm wrench. Fasteners may be accessed from the sides underneath and through the slots in the OEM bumper.



Figure 1





## Installation Instructions

### Chevy Winch Bumper

Product Number: A1350-A1352

Application: '05-Current Chevy  
2500-3500 HD

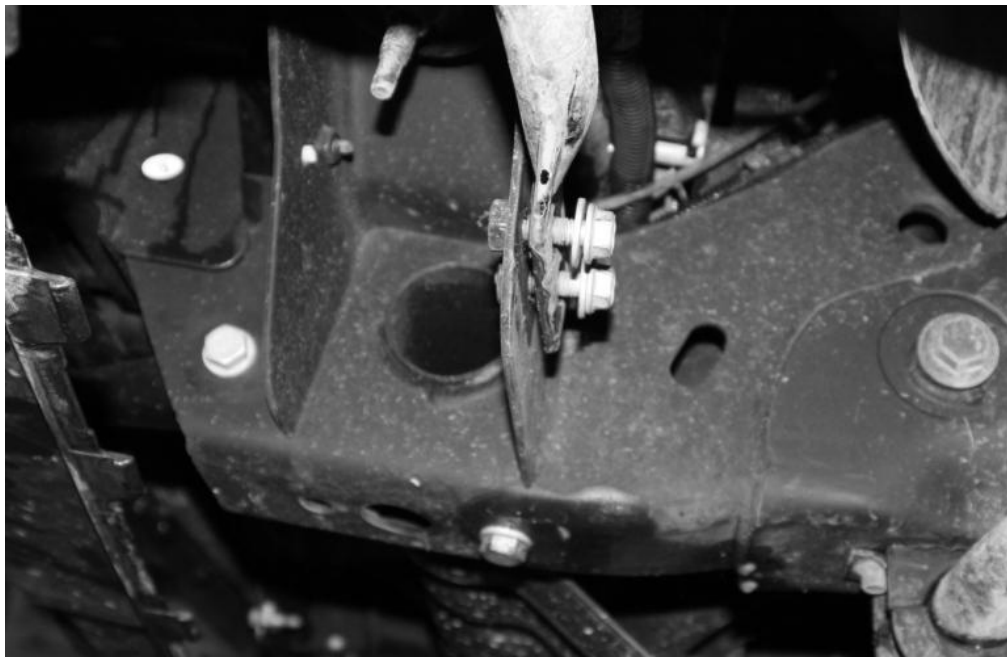


Figure 2

- ☐ C) Loosen fastener and swing outer bumper support tube down to allow the OEM bumper to come off the front.
- ☐ D) Remove dart clips, and bolt (passenger side only) connecting inner fender to body.



Figure 3







## Installation Instructions

### Chevy Winch Bumper

Product Number: A1350-A1352

Application: '05-Current Chevy  
2500-3500 HD

- ❑ E) Remove OEM bumper.



Figure 4

- ❑ F) Remove factory tow hook assemblies by removing 3 bolts (each).



Figure 5





## Installation Instructions

### Chevy Winch Bumper

Product Number: A1350-A1352

Application: '05-Current Chevy  
2500-3500 HD

#### **V. Lights and wiring installation**

- ☐ A) Remove headlights following owners manual. On each side, tap into the three turn indicator wires using supplied tap connectors (reference the wiring diagram).
- ☐ B) Connect supplied turn indicator wiring harnesses to tap connectors following wiring diagram; repeat for other side.
- ☐ C) Replace headlights and grill in reverse order of removal.
- ☐ D) Tap into OEM fog light harness following wiring diagram using two supplied tap connectors.
- ☐ E) Connect supplied fog lamp wiring harness to tap connectors following wiring diagram.
- ☐ F) Run passenger side fog lamp supply wires across bottom of bumper and tap into Fab Fours driver side fog lamp wires.
- ☐ G) Install turn indicators into outside bumper light pockets using three self- tapping screws per side.

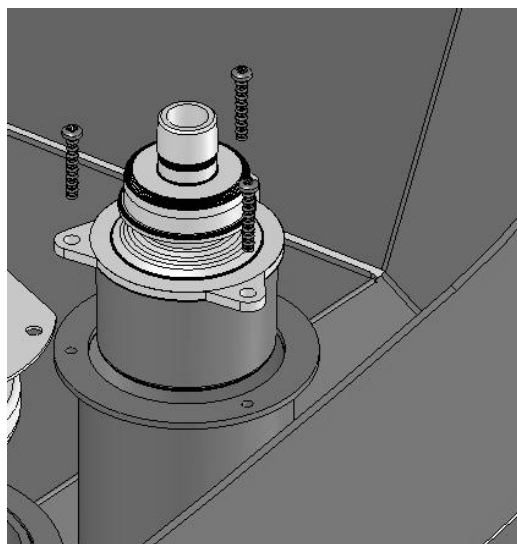


Figure 6





## Installation Instructions

### Chevy Winch Bumper

Product Number: A1350-A1352

Application: '05-Current Chevy  
2500-3500 HD

- ❑ H) Install fog lamp brackets onto inner light pockets using two bolts and nuts per side and attach running light to bracket as shown using two bolts, washers, and nuts per side. Verify that light adjustment screw is facing downward before tightening fully.

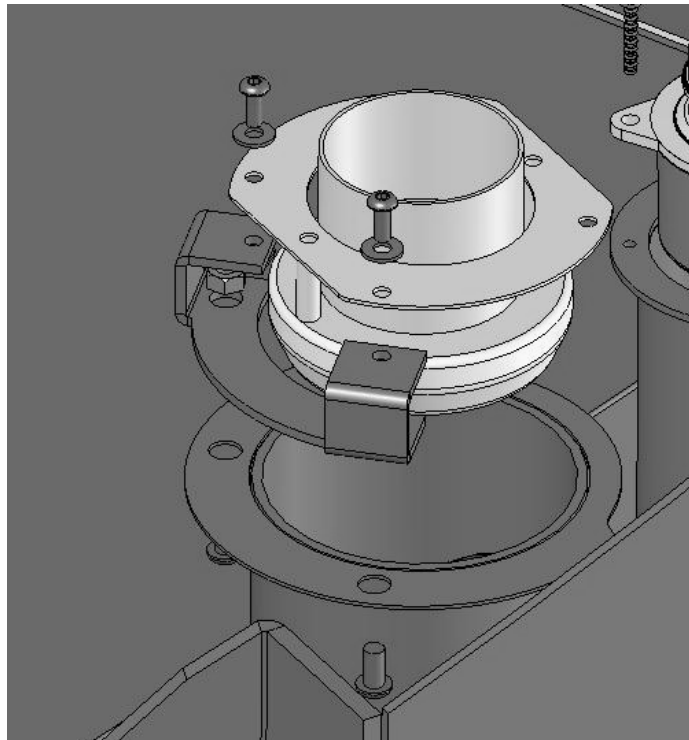


Figure 7

- ❑ I) Do not connect wiring harnesses to lights until bumper is installed.





## Installation Instructions

### Chevy Winch Bumper

Product Number: A1350-A1352

Application: '05-Current Chevy  
2500-3500 HD

#### VI. Bumper Installation

- ❑ **Optional:** If installing winch and roller fairlead (neither provided) into bumper, do it at this time. Bottom bolts (not provided) go through fairlead, then into winch. Thread 7/16" cap screws through hole in front bumper and into winch body.
- ❑ **Note:** Winch should be bolted to FRONT FACE of the bumper in four places, and can be bolted to winch tray if so desired with two additional fasteners.

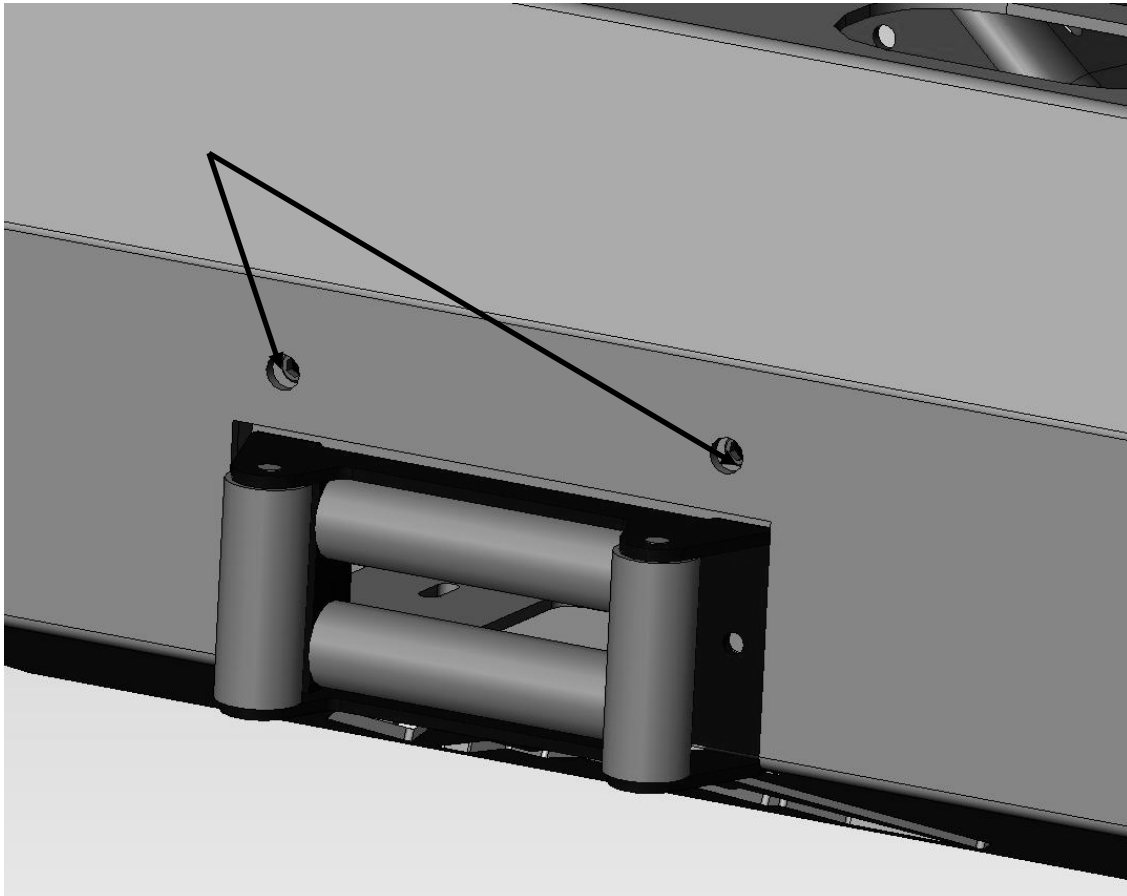


Figure 8





## Installation Instructions

### Chevy Winch Bumper

Product Number: A1350-A1352

Application: '05-Current Chevy  
2500-3500 HD

- ❑ A) Slide frame mount plate into frame and align with OEM mount locations (2 per side), one up from the bottom.

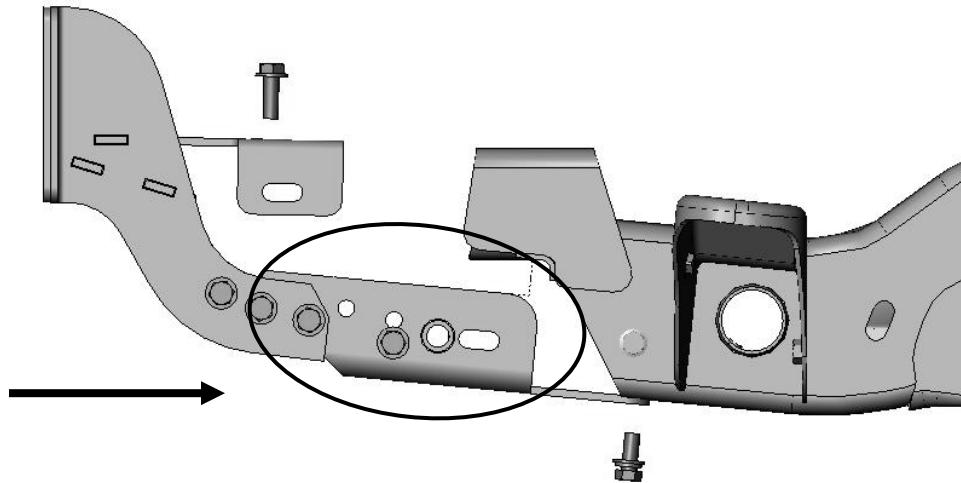


Figure 9

- ❑ B) Install intermediate mount to frame mount as shown below using 1/2" bolts and nuts.

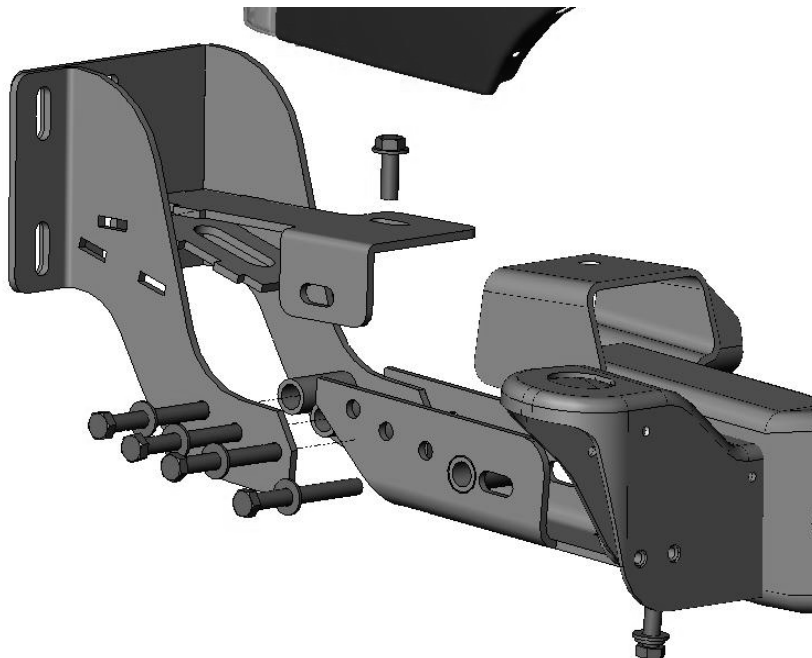


Figure 10





## Installation Instructions

### Chevy Winch Bumper

Product Number: A1350-A1352

Application: '05-Current Chevy  
2500-3500 HD

- ❑ C) Mount assembly should look like this; do not fully tighten fasteners yet.



Figure 11

- ❑ C) Install bolt plates into mount buckets on the inside of the bumper. Hold the bolt plates in position with the supplied retaining washers.

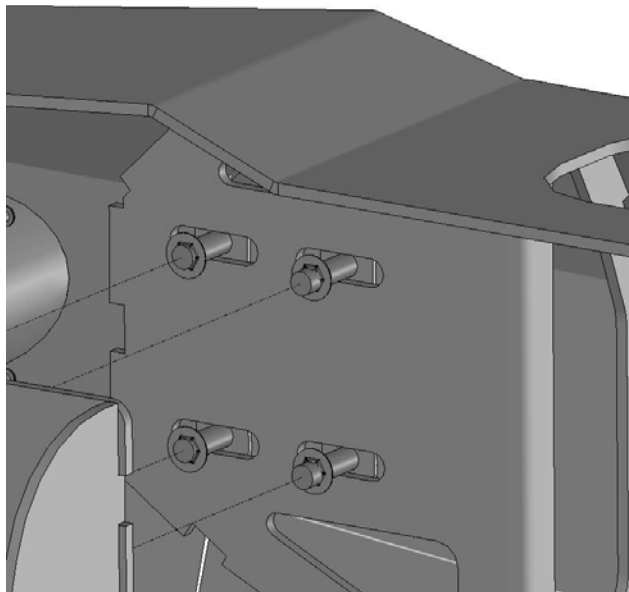


Figure 12





## Installation Instructions

### Chevy Winch Bumper

Product Number: A1350-A1352

Application: '05-Current Chevy  
2500-3500 HD

- ☐ C) Carefully lift bumper and line bolts up to the mounting flanges. Slide flat washer, lock washer over each bolt and thread on ½ nut. Tighten finger tight until final alignment is finished. Repeat for other side.

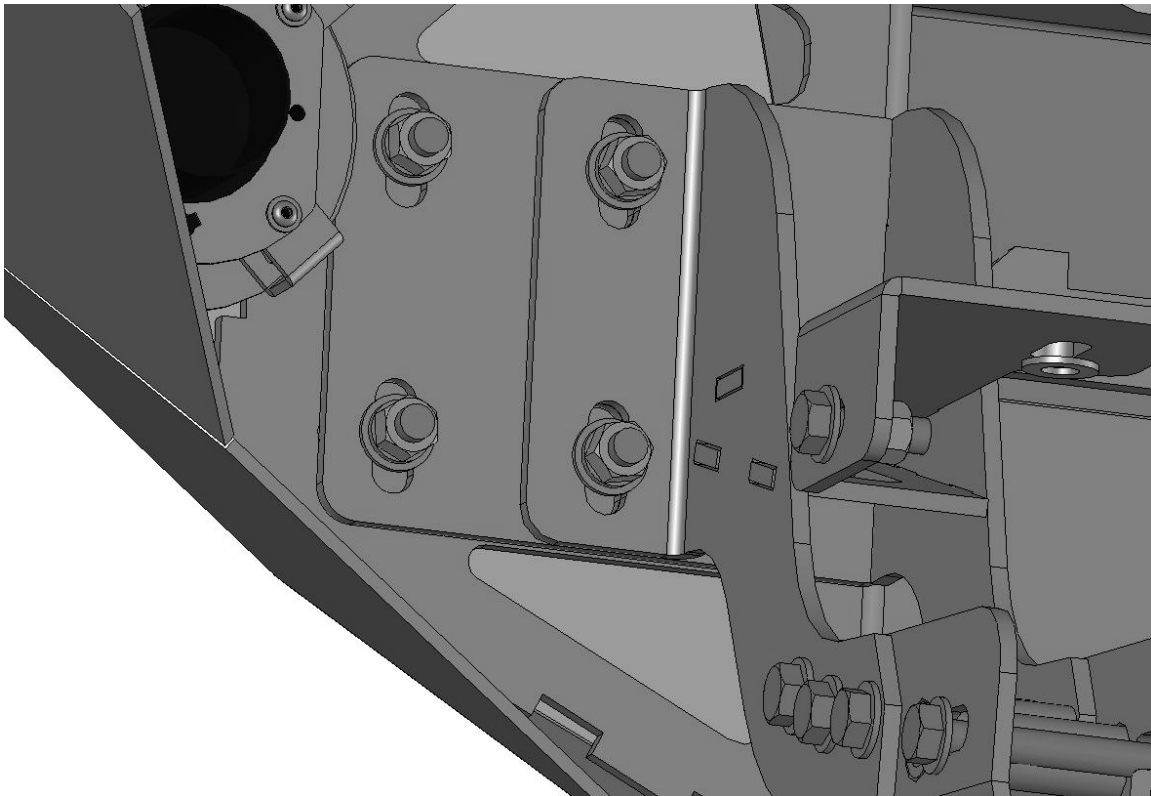


Figure 13

- ☐ C) Adjust the bumper to achieve good visual alignment as follows:
  1. Adjust “castor” and in/out with mounting bracket.
  2. Adjust left/right and up/down with the intermediate mount bolts.
- ☐ F) Tighten all fasteners; beginning with frame mounts. Then tighten all mount-to-bumper fasteners.
- ☐ G) Trim inner-fender liners to match bumper if desired.
- ☐ H) Connect wiring harnesses to lights as shown in wiring diagram.
- ☐ I) Verify proper operation of lights. **Note:** Turn indicators should be dim during “running” condition and flash bright for turn.





## Installation Instructions

### Chevy Winch Bumper

Product Number: A1350-A1352

Application: '05-Current Chevy  
2500-3500 HD

## VII. Wiring Diagram

### Driver Side Turn Indicator at Headlight

OEM (Running) Brown → White Fab Fours

OEM (Turn) Green/White → Red Fab Fours

OEM (Ground) Black → Green Fab Fours

### Passenger Side Turn Indicator at Headlight

OEM (Running) Brown → White Fab Fours

OEM (Turn) White/Blue → Red Fab Fours

OEM (Ground) Black → Green Fab Fours

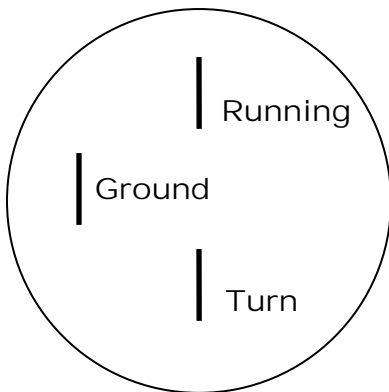
### Fog Lamp

OEM (Power) Orange/Grey → Red Fab Fours

OEM (Ground) Black → Green Fab Fours

**Note:** Tap into Fab Fours driver side fog lamp harness to supply passenger side

### Hella Turn Indicator Connectors







## Installation Instructions

### Chevy Winch Bumper

Product Number: A1350-A1352

Application: '05-Current Chevy  
2500-3500 HD

#### VIII. Maintenance/Care

- ☐ Periodically check and tighten all fasteners.
- ☐ Stripped, fractured, or bent bolts or nuts need to be replaced.

#### IX. Contact Information

Fab Fours Inc.  
10424 Rodney St  
Charlotte, NC 28134

Phone (866)-385-1905  
Fax (866)-574-1424  
Email [Support@fabfours.com](mailto:Support@fabfours.com)



More than expected... Better than expected

